

NVP90M

Multi-port



- » Multi-port version - distribute vacuum to multiple locations
- » High Productivity – non-clogging design reduces downtime
- » Strong hold – powerful vacuum up to 28" Hg [948mbar]
- » Mounts Easily – compact and lightweight
- » Fast Response – installs close to vacuum point
- » Efficient – minimal air consumption
- » Reliable operation – straight-through design with no moving parts

Technical Data

Fluid

Filtered (100 Micron) unlubricated, non-corrosive dry gases

Operating Temperature

-100° to -400° F (-73° to -204°C)
20° to 120° F (-7° to 49°C) (Valve)

Operating Pressure

80 PSI (5.5 bar) Standard or
60 PSI (4.1 bar)

Materials

Generator Body: Anodized Aluminum

Supply Line

1/2" OD (12mm)

Vacuum Line

1/2" OD (12mm), preferred
3/4" (22mm) for lines exceeding
3' (1M)

Mounting Holes

Mounting holes accept
10-32[M5] screws

Electrical

24V -5% to 10% (VA,VB option)
12V -5% to 10% (VC option)

Power Consumption (Watts)

1.6 watts

Response Times

8 milliseconds

Cycle Rate

45 cycles/second

Average Valve Life

50 million cycles

Electrical Connection

11.8" Flying Lead

LED Indicator with Manual Override

Yes

Control Valve

12V (VC option) or 24 normally closed (VA option) or 24V normally open (VB option)

Performance Level Designations

"L" 0-10"Hg [0 to 339mbar]

for low vacuum/high flow applications

"M" 0-20"Hg [0 to 677mbar]

for medium vacuum/high flow applications

"H" 0-28"Hg [0 to 948mbar]

for high vacuum/standard flow applications

Product options

Standard (NVP90)

Valve controlled (NVP90V)

Multi-port (NVP90M)

Air Saver (NVP90C)



Standard Models

Accessories

Part number	Valve	Max. Vacuum Level	Max. Vacuum Flow	Air Consumption	Silencer
NVP90M0-300M-S11A38	None	20"Hg	20.00 SCFM	12.50 SCFM	NST8B Silencer
NVP90M0-300H-S11A38	None	28"Hg	20.00 SCFM	22.00 SCFM	NST8B Silencer
NVP90M0-350M-S11A38	None	20"Hg	28.00 SCFM	22.00 SCFM	NST8B Silencer
NVP90M0-350H-S11A38	None	28"Hg	28.00 SCFM	28.00 SCFM	NST8B Silencer
NVP90M0-300M-S11A38	NC 24V	20"Hg	20.00 SCFM	12.50 SCFM	NST8B Silencer
NVP90M0-300H-S11A38	NC 24V	28"Hg	20.00 SCFM	22.00 SCFM	NST8B Silencer
NVP90M0-350M-S11A38	NC 24V	20"Hg	28.00 SCFM	22.00 SCFM	NST8B Silencer
NVP90M0-350H-S11A38	NC 24V	28"Hg	28.00 SCFM	28.00 SCFM	NST8B Silencer



Option selector

NVP★90M★-★ ★ ★ ★-S11A★ ★

Series	Substitute	Accessories	Substitute
NVP (Imperial Thread)		Extra Ports / NVG-150-GF	A38
NVPM (Metric Thread)	M	Extra Ports / NVTMV-QD-6 / NVG-150-GF	A22
Valve	Substitute	Extra Ports / NVSMN-QD-6 / NVG-150-GF	A24
Multi-Port, No Valve	MO	Extra Ports / NVSMP-QD-6 / NVG-150-GF	A26
Multi-Port, NC 24V Vacuum	MA	Silencers	
Multi-Port, NO 24V Vacuum	MB	NST8B (76dB)	S11
Multi-Port, NC 12V Vacuum	MC		
Vacuum Flow Level	Substitute		
Venturi Cartridge 300	300		
Venturi Cartridge 350	350		
Vacuum Level	Substitute		
10"Hg @ 80PSI (Standard)	L		
20"Hg @ 80PSI (Standard)	M		
28"Hg @ 80PSI (Standard)	H		
10"Hg @ 60PSI	X		
20"Hg @ 60PSI	Y		
28"Hg @ 60PSI	Z		

Accessories

Standard Models	Inline Fitting	Swivel Elbow Fitting	Vacuum Swivel Fitting
			
NVP90M0-300M-S11A00	124250738	124470738	124470748
NVP90M0-300H-S11A00	124250738	124470738	124470748
NVP90M0-350M-S11A00	124250738	124470738	124470748
NVP90M0-350H-S11A00	124250738	124470738	124470748

*Proper selection of vacuum cups depends on the application. Cups are available in various durometers, colors and materials. If you do not see what you are looking for, please consult factory
 *The fittings, cups, and spring levelers listed are a small selection of possible options please refer to the specific catalog section

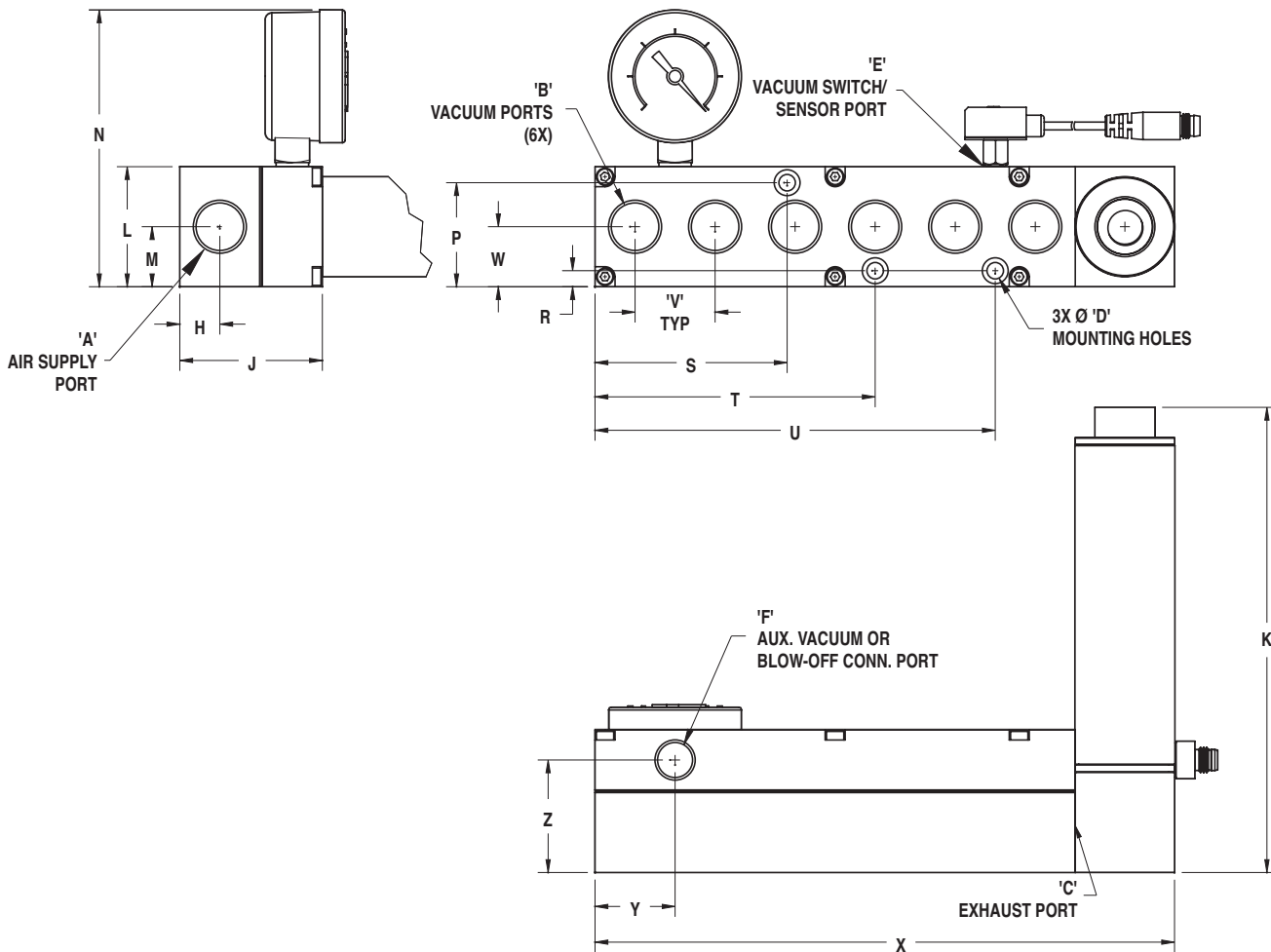
NVP90M

Multi-port



1

Dimensions inches (mm)

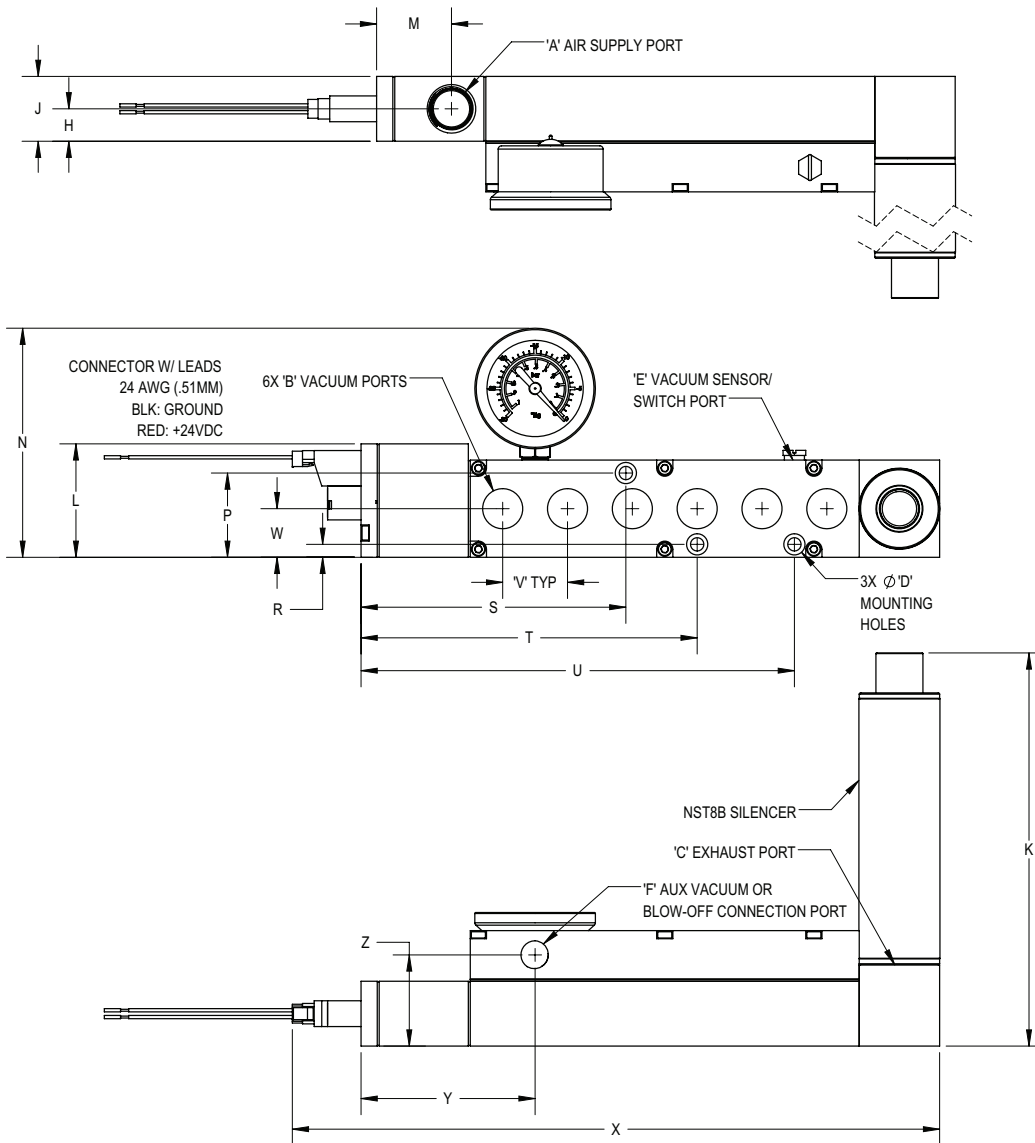


Model	Units	A	B	C	D	E	F	H	J	K	L	M	N	P	R	S	T	U	V	W	X	Y	Z
NVP90M0-3***-S11A38	Imperial	3/8 NPTF	3/8 NPTF	1/2 NPTF	0.21	10-32	1/8 NPTF	0.50	1.78	6.07	1.50	0.75	3.41	1.30	0.20	2.40	3.50	5.00	1.00	0.75	7.25	1.00	1.41
NVPM90M0-3***-S11A38	(Metric)	(G 3/8)	(G 3/8)	(G 1/2)	(5.3)	M-5	(G 1/8)	(12.7)	(45.2)	(154.2)	(38.1)	(19.1)	(86.6)	(33.0)	(5.1)	(61.0)	(88.9)	(127.0)	(25.4)	(19.1)	(184.2)	(25.4)	(35.8)

MODULAR VACUUM GENERATORS



Dimensions inches (mm)



Model	Units	A	B	C	D	E	F	H	J	K	L	M	N	P	R	S	T	U	V	W	X	Y	Z
NVP90MA-3***-S11A38	Imperial	3/8 NPTF	3/8 NPTF	1/2 NPTF	0.21	10-32	1/8 NPTF	0.50	1.00	6.06	1.75	1.16	3.53	1.30	0.20	4.06	5.19	6.69	1.00	0.75	9.99	2.69	1.41
NVPM90MA-3***-S11A38	(Metric)	(G 3/8)	(G 3/8)	(G 1/2)	(5.3)	M5	(G 1/8)	(12.7)	(25.4)	(153.9)	(44.5)	(29.5)	(89.7)	(33.0)	(5.1)	(103.1)	(131.8)	(169.9)	(25.4)	(19.1)	(253.7)	(68.3)	(35.8)