

Double Banana Binding Post Jack to 50 Ohm BNC Female Adapter



LCAD9791

Configuration

- Double Banana Binding Post Jack Connector 1
- BNC Female Connector 2
- Straight Body Geometry

Features

Applications

- Allows Connection Between Series
- General Purpose Test

Description

L-com's LCAD9791 Double Banana Binding Post jack to 50 ohm BNC female adapter is part of our full line of RF components available for same-day shipping. Our Double Banana Binding Post to BNC adapter has a jack to female gender configuration.

RF adapters are often used to enable connections between two connector types that would otherwise not mate. Certain adapter configurations can also be used to protect connectors on expensive equipment where the number of connect/ disconnect cycles is high. An RF, microwave or millimeter wave adapter is connected to the equipment, and the commonly changed connection is made with the adapter which can be easily replaced when it wears out after high usage; such adapters are referred to as connector savers. L-com also offers bulkhead, panel mount, hermetically sealed, reverse polarity, and isolated ground adapter varieties to serve all of your RF, microwave and millimeter wave needs.

Mechanical Specifications

Size

Length	2.13 in [54.10 mm]
Width	1.17 in [29.72 mm]
Weight	0.05 lbs [21.36 g]

Description	Connector 1	Connector 2
Type	Double Banana Binding Post Jack	BNC Female
Polarity	Standard	Standard

Material Specifications

Description	Connector 1		Connector 2	
	Material	Plating	Material	Plating
Type	Double Banana Binding Post Jack		BNC Female	
Contact	Brass	Nickel	Brass	Gold
Insulation			ABS	
Outer Conductor			Brass	Nickel
Body	PE			

Double Banana Binding Post Jack to 50 Ohm BNC Female Adapter



LCAD9791

Compliance Certifications (see [product page](#) for current document)

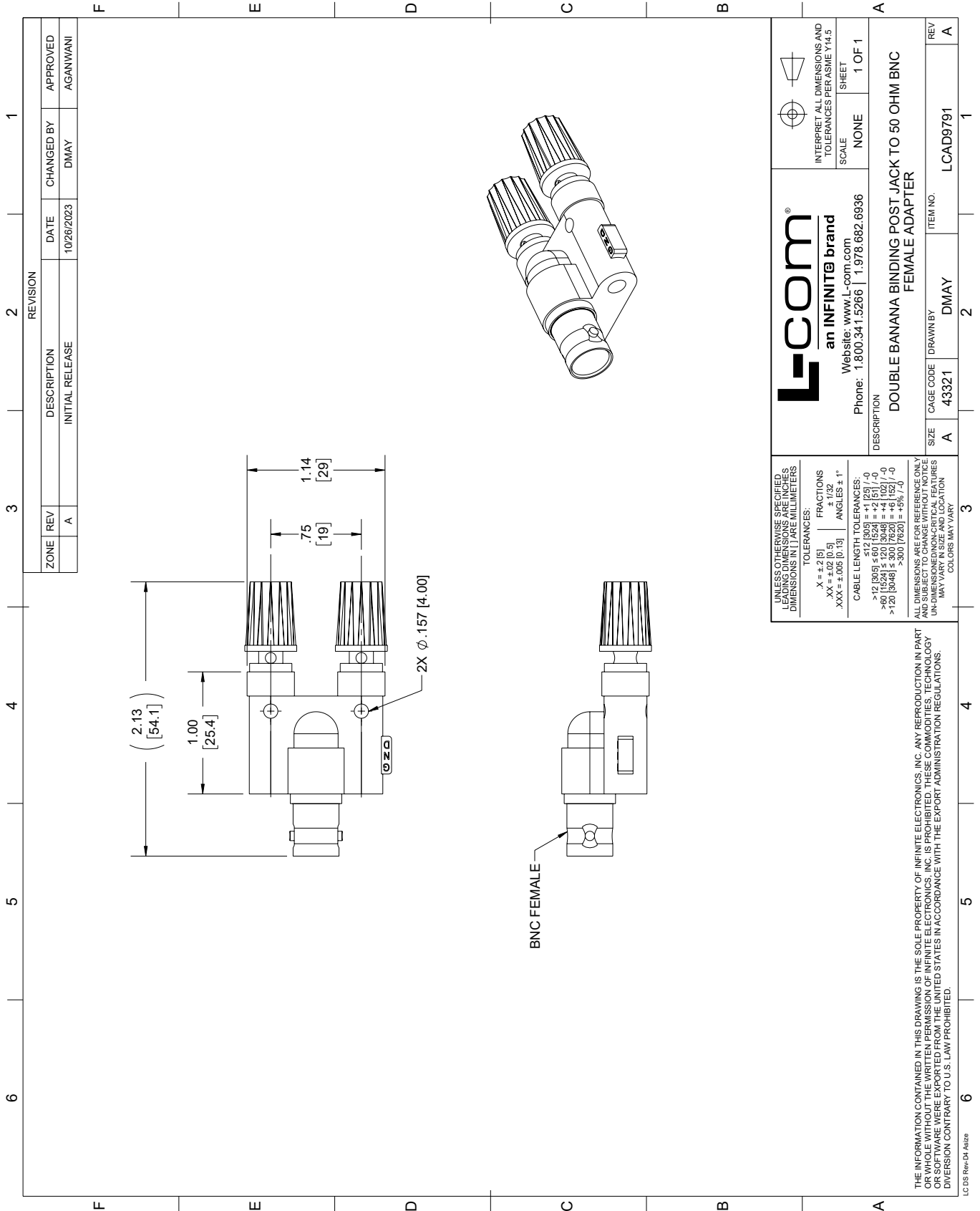
Double Banana Binding Post Jack to 50 Ohm BNC Female Adapter from L-com has same day shipment for domestic and International orders. Our portfolio includes coaxial cable assemblies, connectors, adapters and custom products as well as lightning and surge protectors, NEMA rated enclosures, and an RF product line which includes antennas, amplifiers, passive, and active components.

URL: <https://www.l-com.com/banana-jack-bnc-female-straight-adapter-lcad9791-p.aspx>


The information contained within this document is accurate to the best of our knowledge and representative of the part described herein. It may be necessary to make modifications to the part and/or the documentation of the part in order to implement improvements. L-com reserves the right to make such changes as required. Unless otherwise stated, all specifications are nominal. L-com does not make any representation or warranty regarding the suitability of the part described herein for any particular purpose, and L-com does not assume liability arising out of the use of any part or document.

LCAD9791 CAD Drawing

Double Banana Binding Post Jack to 50 Ohm BNC Female Adapter



ZONE		REVISION	
REV	DESCRIPTION <td>DATE <td>APPROVED</td> </td>	DATE <td>APPROVED</td>	APPROVED
A	INITIAL RELEASE	10/26/2023	AGANWANI
		CHANGED BY	
		DMAY	

 an INFINITE brand Website: www.L-com.com Phone: 1.800.341.5266 1.978.682.6936		INTERPRET ALL DIMENSIONS AND TOLERANCES PER ASME Y14.5 SCALE: NONE SHEET: 1 OF 1
DESCRIPTION: DOUBLE BANANA BINDING POST JACK TO 50 OHM BNC FEMALE ADAPTER		
SIZE: A	CAGE CODE: 43321	ITEM NO.: LCAD9791
DRAWN BY: DMAY	REV: A	

UNLESS OTHERWISE SPECIFIED, LEADING DIMENSIONS ARE DECIMAL DIMENSIONS IN INCHES. MILLIMETER DIMENSIONS IN [] ARE MILLIMETERS.

TOLERANCES:
 X = ±.2(5) FRACTIONS
 .XX = ±.02 (0.5) ± 1/32
 .XXX = ±.005 (0.13) ANGLES ± 1°

CABLE LENGTH TOLERANCES:
 0-100 [0-1000] = ±.05 (1.27)
 >12 [305] ≤ 60 [1524] = ±.1 (2.54) / -0
 >60 [1524] ≤ 120 [3048] = +.1 (2.54) / -0
 >120 [3048] ≤ 300 [7620] = +.1 (2.54) / -0
 >300 [7620] = +.25% / -0

ALL DIMENSIONS ARE FOR REFERENCE ONLY. DIMENSIONS OF CRITICAL FEATURES MAY VARY IN SIZE AND LOCATION. COLORS MAY VARY.

THE INFORMATION CONTAINED IN THIS DRAWING IS THE SOLE PROPERTY OF INFINITE ELECTRONICS, INC. ANY REPRODUCTION IN PART OR WHOLE WITHOUT THE WRITTEN PERMISSION OF INFINITE ELECTRONICS, INC. IS PROHIBITED. THESE COMMODITIES, TECHNOLOGY OR SOFTWARE WERE EXPORTED FROM THE UNITED STATES IN ACCORDANCE WITH THE EXPORT ADMINISTRATION REGULATIONS. DIVERSION CONTRARY TO U.S. LAW PROHIBITED.

LC DS Rev-D4 A426