

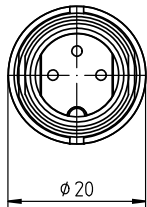
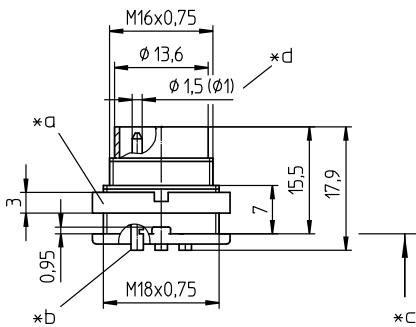
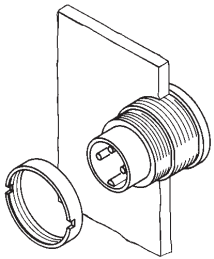
03 SGV

Circular connectors with threaded joint M16 acc. to IEC 61076-2-106, IP40/IP68

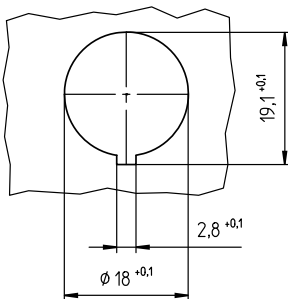


Chassis plug acc. to IEC 61076-2-106, IP40, with threaded joint and solder terminals, for back side mounting

**03** **SGV**



\*e



**Environmental conditions**

Temperature range -40 °C/+85 °C

**Materials**

Insulating body PA GF, V-0 according to UL94  
 Contact pin CuZn, silver-plated and flash gold-plated (3-8 poles)  
 CuZn, pre-nickel and gold-plated (12 poles)  
 Housing Zn diecast, pre-copper and nickel-plated  
 Ring screw CuZn, nickel-plated

**Mechanical data**

Tightening torque connector 1-3 Nm  
 Tightening torque nut 1-3 Nm  
 Protection class IP40<sup>1</sup>

<sup>1</sup> according to IEC DIN EN 60529, only in locked condition with an appropriate counterpart

**Connectable conductors for solder area**

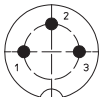
Section  $\leq 0.75 \text{ mm}^2$  (AWG 20) (3-8 poles)  
 $\leq 0.25 \text{ mm}^2$  (AWG 24) (12 poles)

**Electrical data (at T<sub>amb</sub> 20 °C)**

Rated current 5 A (T<sub>amb</sub> 40 °C, 3-8 poles)  
 3 A (T<sub>amb</sub> 40 °C, 12 poles)  
 Rated voltage with pollution degree 1:  
 300 V (versions 30, 40, 50/6, 60, 70)  
 100 V (versions 50, 71, 80, 81)  
 160 V (Polbild 120)  
 with pollution degree 2:  
 250 V (versions 30, 40)  
 32 V (versions 50, 71, 80, 81)  
 160 V (versions 50/6, 60, 70, 120)  
 Rated impulse voltage 1500 V (versions 30, 40, 50/6, 60, 70, 120)  
 500 V (versions 50, 71, 80, 81)  
 Material group II (IEC)/I (UL) (400  $\leq$  CTI < 600)  
 Overvoltage category I  
 Insulation resistance > 100 M $\Omega$

**03** **SGV**

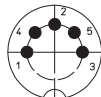
**Pin configurations, solder side view**



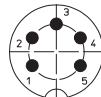
**03-a**  
**SGV 30**



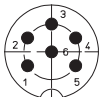
**04-a**  
**SGV 40**



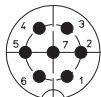
**05-b**  
**SGV 50**



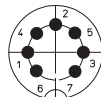
**05-a**  
**SGV 50/6**



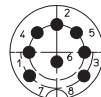
**06-a**  
**SGV 60**



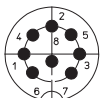
**07-a**  
**SGV 70**



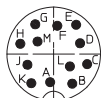
**07-b**  
**SGV 71**



**SGV 80**



**08-a**  
**SGV 81**



**12-a**  
**SGV 120**

- \*a nut enclosed separately
- \*b cup-shaped solder terminal
- \*c mounting direction
- \*d 12 pole version Ø 1.0 mm
- \*e port in mounting plate

**Associated products**

Counterparts

- |            |            |          |
|------------|------------|----------|
| KV         | KV ... C   | KV ...-8 |
| KV ...-8 C | KV ...-8 C | WKV      |
| WKV ... C  |            |          |

Accessories

- |      |        |      |
|------|--------|------|
| 0383 | 038399 | 0384 |
| 0385 | 038899 |      |

Harnessing equipment

- ZMS 20

03 **SGV**

| Designation | Pole Number | PU (Pieces) | MDQ (Pieces) |
|-------------|-------------|-------------|--------------|
| SGV 30      | 3           | 50          | 100          |
| SGV 40      | 4           | 50          | 100          |
| SGV 50      | 5           | 50          | 100          |
| SGV 50/6    | 5           | 50          | 100          |
| SGV 60      | 6           | 50          | 100          |
| SGV 70      | 7           | 50          | 100          |
| SGV 71      | 7           | 50          | 100          |
| SGV 80      | 8           | 50          | 100          |
| SGV 81      | 8           | 50          | 100          |
| SGV 120     | 12          | 50          | 100          |

**Packaging:**  
in a cardboard box