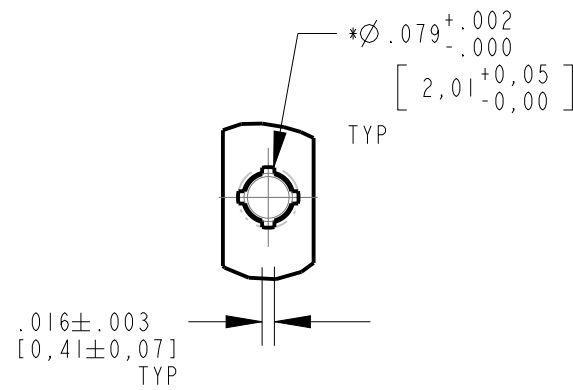


**RoHS Compliant 515-1154-803F Lightpipe**

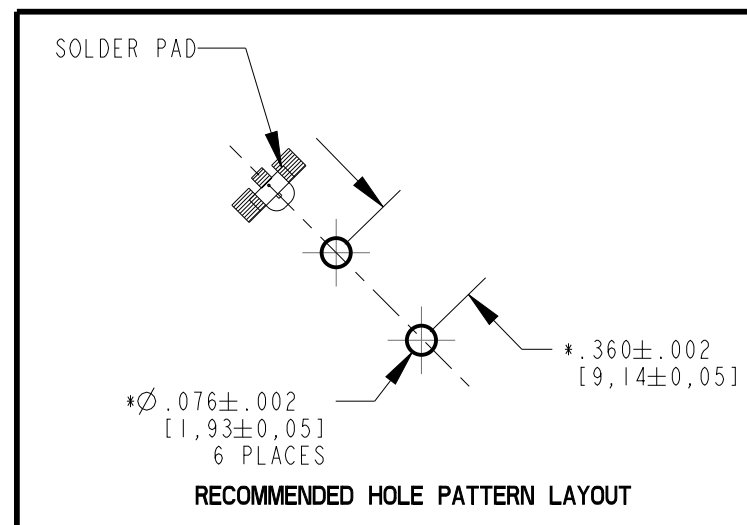
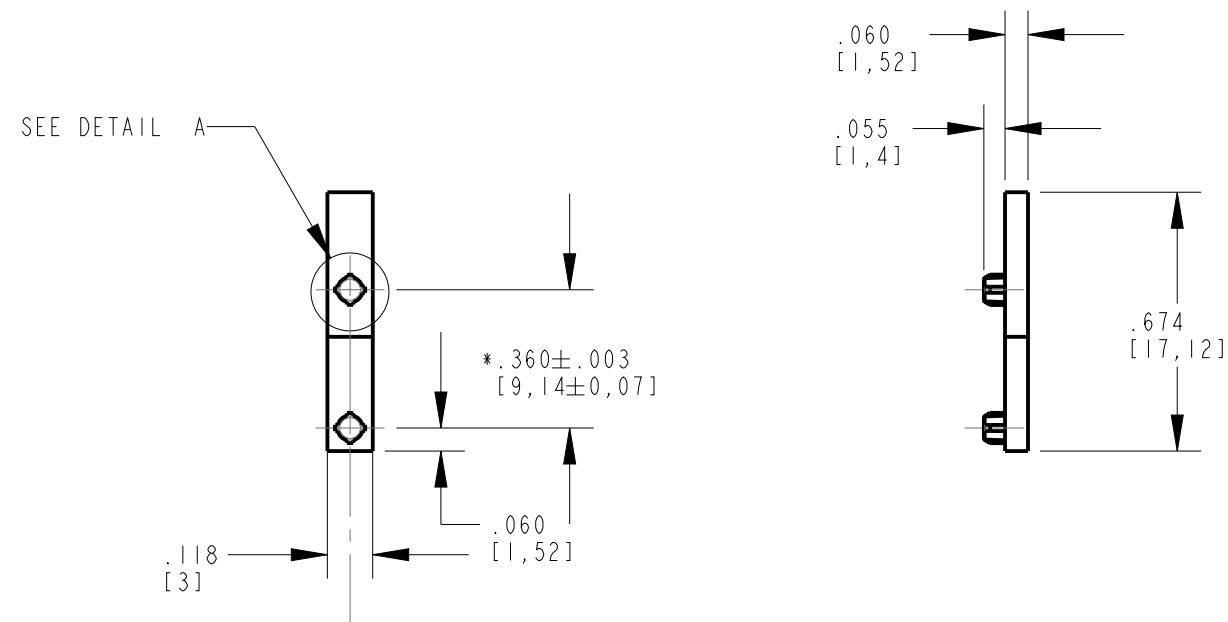
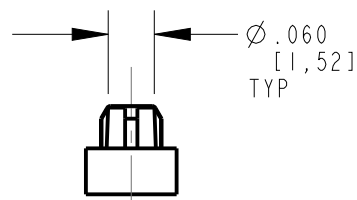
Part Numbers with the "F" suffix ending are RoHS Compliant.  
Packaging is marked with "RoHS Compliant" label or equivalent markings.

REV	ECN NO	REVISIONS	DRN	CKD	APP	DATE
A		NEW RELEASE	BP		NO	3-24-17

\* DENOTES CRITICAL DIMENSION OR SPECIFICATION



DETAIL A  
SCALE 4.000



- NOTES:
1. COMPONENT MOLDED IN A CLEAR TRANSMISSIVE POLYCARBONATE, UL 94V-0 GRADE.
  2. COMPONENT DESIGNED TO BE PRESSED INTO P.C. BOARD.
  3. DIALIGHT LIGHTPIPE PART NUMBER: 515-1154-803F
  4. RECOMMENDED LIGHT SOURCE: RIGHT ANGLE LED FROM DIALIGHT LED SELECTOR GUIDE
  5. ALL SURFACES ARE POLISHED WITH EXCEPTION OF PRESS FIT PINS.

THIS DRAWING AND THE CONTENTS HEREIN ARE CONFIDENTIAL AND THE SOLE PROPERTY OF DIALIGHT CORP. REPRODUCTION OF THIS DRAWING OR CONSTRUCTION OF ANY PARTS WITHIN THIS DRAWING ARE FORBIDDEN WITHOUT THE WRITTEN CONSENT OF DIALIGHT CORP.		
SCALE: 2.000	DRAWING NUMBER	REV
ALL DIM'S: INCH (mm)	C-18294	A
TOLERANCES: UNLESS OTHERWISE SPECIFIED	TITLE SINGLE ELEMENT LP .674" LG RoHS COMPLIANT	
FRACTIONS: ±1/64	MATERIAL	
DECIMALS (.XX): ±.01	FINISH	
DECIMALS (.XXX): ±.005	FSCM 83330	
DECIMALS (.XXXX): ±.0005	SHEET 1 OF 1 FAMILY TABLE:	
ANGLES: ±1°	Dialight 1501 ROUTE 34 SOUTH FARMINGDALE, NJ 07727 (732) 919-3119 www.dialight.com	