

MBT. Diamond cut knurled knobs

Technopolymer

INCH



PP



1



2



3



4



5



6



7



8



9



10



11



12



13



14



15

RH

MATERIAL

High-resilience polypropylene based (PP) technopolymer, black colour, matte finish.

COLOURED CENTRE CAP

Technopolymer, matte finish.

To order, add the index of the desired colour (C9, ..., C17) to the code and the description.

On request and for sufficient quantities, it can be supplied in other colours or with customised graphic symbols, marks or writings.

STANDARD EXECUTIONS

- **MBT-B**: brass boss, threaded blind hole or plain blind hole complete with socket set screw for fitting to shaft.

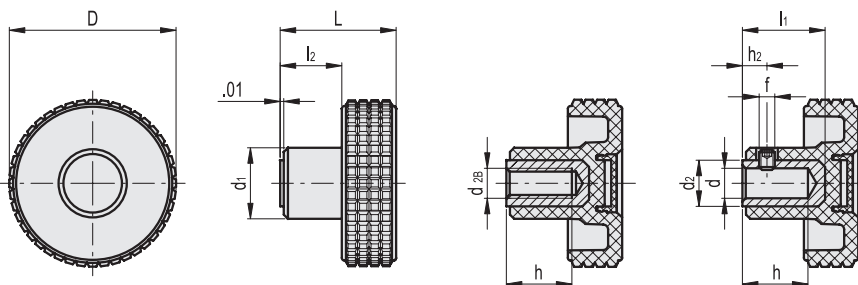
- **MBT-p**: zinc-plated steel threaded stud, chamfered flat end according to ISO 4753 (see Technical Data on page A-11).

ERGONOMY AND DESIGN

The particular knurling on the outside rim of the knob, provided with a structure of very fine pitch, allows a safe and comfortable grip, offering the operator the possibility of operating under the most different working conditions in a sensitive and ergonomic way and simplifying the adjustment of the knob during rapid rotation (or screwing) without any unpleasant angular work for the hand and wrist.



ELESA Original design



* Complete with colour index, example: 934206-C2 MBT.30 B-1/4-20-C2

C9 RAL9005
 C2 RAL2004
 C3 RAL7035
 C4 RAL1021
 C5 RAL5024
 C6 RAL3000
 C17 RAL6017

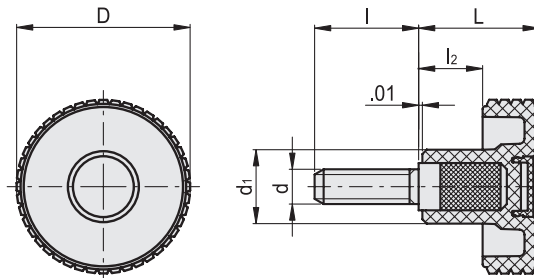
INCH

MBT-B

Code	Description	D	d	d28	L	d1	d2	l1	l2	h	h2	f	⚖
934206*	MBT.30 B-1/4-20*	1.22	-	1/4-20	0.94	0.59	-	-	0.45	0.47	-	-	0.04
934316*	MBT.40 B-1/4-*	1.57	0.250	-	1.04	0.67	0.47	0.67	0.49	0.55	0.2	10-32	0.06
934321*	MBT.40 B-1/4-20*	1.57	-	1/4-20	1.04	0.67	-	-	0.49	0.47	-	-	0.05
934326*	MBT.40 B-5/16-18*	1.57	-	5/16-18	1.04	0.67	-	-	0.49	0.51	-	-	0.05
934416*	MBT.50 B-3/8-*	1.97	0.375	-	1.3	0.79	0.59	0.98	0.63	0.79	0.24	10-32	0.1
934421*	MBT.50 B-5/16-18*	1.97	-	5/16-18	1.3	0.79	-	-	0.63	0.79	-	-	0.07
934426*	MBT.50 B-3/8-16*	1.97	-	3/8-16	1.3	0.79	-	-	0.63	0.71	-	-	0.07
934506*	MBT.60 B-3/8-*	2.36	0.375	-	1.54	0.91	0.63	1.18	0.73	0.98	0.31	1/4-20	0.15
934511*	MBT.60 B-3/8-16*	2.36	-	3/8-16	1.54	0.91	-	-	0.73	0.79	-	-	0.11
934516*	MBT.60 B-1/2-13*	2.36	-	1/2-13	1.54	0.91	-	-	0.73	0.79	-	-	0.13

Clamping knobs

84



* Complete with colour index, example: 934261-C2 MBT.30 p-1/4-20x1/2-C2

C9 RAL9005
 C2 RAL2004
 C3 RAL7035
 C4 RAL1021
 C5 RAL5024
 C6 RAL3000
 C17 RAL6017

MBT-p

INCH

Code	Description	D	d2A	L	d1	l	l2	⚖
934261-*	MBT.30 p-1/4-20x1/2-*	1.22	1/4-20	0.94	0.59	0.500	0.45	0.03
934266-*	MBT.30 p-1/4-20x3/4-*	1.22	1/4-20	0.94	0.59	0.750	0.45	0.04
934346-*	MBT.40 p-1/4-20x3/4-*	1.56	1/4-20	1.04	0.67	0.750	0.49	0.04
934361-*	MBT.40 p-1/4-20x1-*	1.56	1/4-20	1.04	0.67	1.000	0.49	0.05
934381-*	MBT.40 p-5/16-18x3/4-*	1.56	5/16-18	1.04	0.67	0.750	0.49	0.06
934391-*	MBT.40 p-5/16-18x1-*	1.56	5/16-18	1.04	0.67	1.000	0.49	0.06
934441-*	MBT.50 p-5/16-18x3/4-*	1.97	5/16-18	1.3	0.79	0.750	0.63	0.08
934446-*	MBT.50 p-5/16-18x1-*	1.97	5/16-18	1.3	0.79	1.000	0.63	0.09
934451-*	MBT.50 p-3/8-16x1-*	1.97	3/8-16	1.3	0.79	1.000	0.63	0.09
934456-*	MBT.50 p-3/8-16x1¼-*	1.97	3/8-16	1.3	0.79	1.250	0.63	0.1
934521-*	MBT.60 p-3/8-16x1-*	2.4	3/8-16	1.54	0.91	1.000	0.73	0.13
934526-*	MBT.60 p-3/8-16x1¼-*	2.4	3/8-16	1.54	0.91	1.250	0.73	0.14

