

MATERIAL

High-resilience polypropylene based (PP) technopolymer, black colour, matte finish.

VCT.25: glass-fibre reinforced polyamide based (PA) technopolymer, black colour, matte finish.

COLOURED CENTRE CAP

Technopolymer, matte finish. Not available for VCT.25.

To order, add the index of the desired colour (C9, ..., C17) to the code and the description.

On request and for sufficient quantities it can be supplied in other colours or with customised graphic symbols, marks or writings.

STANDARD EXECUTIONS

- **VCT-A:** black-oxide steel boss, plain blind hole complete with socket set screw for fitting to shaft.

- **VCT-B:** brass boss, threaded blind hole (VCT.25) or threaded pass-through hole (VCT.32 - 40 - 50 - 63 - 74).

VCT.32 - 40 - 50 - 63 - 74 are available also with plain blind hole complete with socket set screw for fitting to shaft.

- **VCT.FP:** brass boss, threaded pass-through hole.

- **VCT-p:** zinc-plated steel threaded stud, chamfered flat end according to ISO 4753 (see Technical Data on page A-10).

ACCESSORIES ON REQUEST

Coloured centre caps (see table).

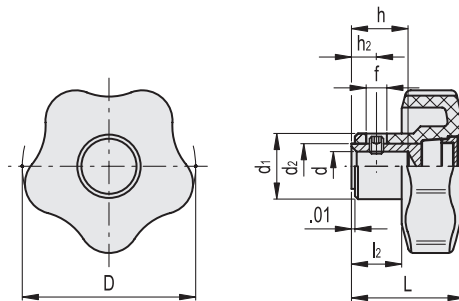
Cap for	C9	C2	C3	C4	C5	C6	C17	Description
VCT.32	6900	6903	6904	6905	6906	6901	6907	CA.VCT.32-*
VCT.40	6910	6913	6914	6915	6916	6911	6917	CA.VCT.40-*
VCT.50	6920	6923	6924	6925	6926	6921	6927	CA.VCT.50-*
VCT.63-74-95	6930	6933	6934	6935	6936	6931	6937	CA.VCT.63-74-95-*

* Complete with the index of the colour (C9, ..., C17)



ELESA Original design

VCT-A



* Complete with colour index, example: 970011-C2 VCT.63 A-3/8-C2

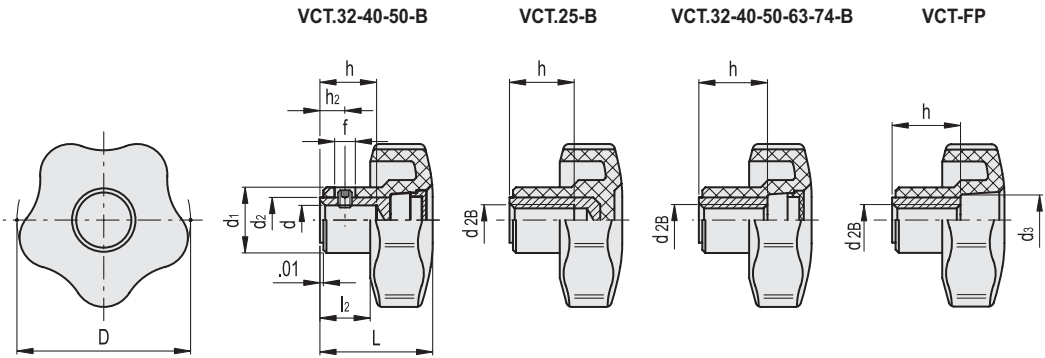
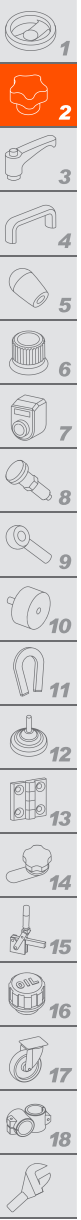


VCT-A

Code	Description	D	d	L	d1	d2	l2	h	h2	f	⚖️
970011-*	VCT.63 A-3/8-*	2.48	0.375	1.46	0.87	0.67	0.63	0.79	0.31	1/4-20	0.12
970012-*	VCT.63 A-1/2-*	2.48	0.500	1.46	0.87	0.75	0.63	0.79	0.31	1/4-20	0.13
970053-*	VCT.74 A-1/2-*	2.91	0.500	1.71	1.02	0.75	0.87	0.79	0.31	1/4-20	0.15

"Max limit Tightening torque" means the max torque value at which the metal insert, in normal conditions of use, is perfectly and strongly anchored to the plastic material.





* Complete with colour index, example: 969841-C2 VCT.32 B-1/4-C2

- C9 RAL9005
- C2 RAL2004
- C3 RAL7035
- C4 RAL1021
- C5 RAL5024
- C6 RAL3000
- C17 RAL6017

INCH

VCT-B

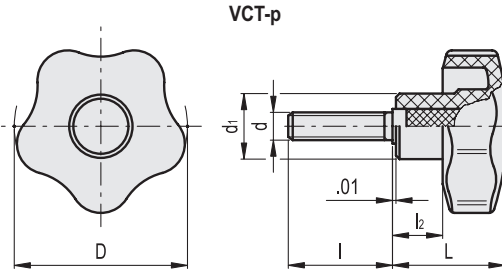
Code	Description	D	d	d2B	L	d1	d2	l2	h	h2	f	C# [ft-lb]	⚖️
969801-C9	VCT.25 B-10-24-C9	0.98	-	10-24	0.75	0.51	-	0.31	0.39	-	-	4	0.02
969803-C9	VCT.25 B-10-32-C9	0.98	-	10-32	0.75	0.51	-	0.31	0.39	-	-	5	0.02
969805-C9	VCT.25 B-1/4-20-C9	0.98	-	1/4-20	0.75	0.51	-	0.31	0.39	-	-	7	0.01
969841*	VCT.32 B-1/4*	1.26	0.250	-	0.91	0.59	0.47	0.39	0.47	0.2	10-32	-	0.03
969843*	VCT.32 B-10-32*	1.26	-	10-32	0.91	0.59	-	0.39	0.39	-	-	5	0.02
969844*	VCT.32 B-1/4-20*	1.26	-	1/4-20	0.91	0.59	-	0.39	0.47	-	-	7	0.02
969891*	VCT.40 B-1/4*	1.57	0.250	-	1.06	0.67	0.47	0.47	0.55	0.24	10-32	-	0.08
969892*	VCT.40 B-5/16*	1.57	0.312	-	1.06	0.67	0.55	0.47	0.59	0.24	10-32	-	0.09
969893*	VCT.40 B-1/4-20*	1.57	-	1/4-20	1.06	0.67	-	0.47	0.55	0.24	-	12	0.06
969894*	VCT.40 B-5/16-18*	1.57	-	5/16-18	1.06	0.67	-	0.47	0.71	-	-	13	0.06
969951*	VCT.50 B-5/16*	1.97	0.312	-	1.26	0.75	0.55	0.55	0.63	0.28	10-32	-	0.09
969952*	VCT.50 B-3/8*	1.97	0.375	-	1.26	0.75	0.63	0.55	0.63	0.28	10-32	-	0.09
969953*	VCT.50 B-5/16-18*	1.97	-	5/16-18	1.26	0.75	0.55	0.55	0.63	0.28	-	18	0.09
969954*	VCT.50 B-3/8-16*	1.97	-	3/8-16	1.26	0.75	0.63	0.55	0.63	0.28	-	20	0.08
970015*	VCT.63 B-5/16-18*	2.48	-	5/16-18	1.46	0.87	-	0.63	1.02	-	-	35	0.11
970013*	VCT.63 B-3/8-16*	2.48	-	3/8-16	1.46	0.87	-	0.63	1.02	-	-	37	0.11
970014*	VCT.63 B-1/2-13*	2.48	-	1/2-13	1.46	0.87	-	0.63	1.02	-	-	-	0.11
970062*	VCT.74 B-1/2-13*	2.91	-	1/2-13	1.71	1.02	-	0.87	1.02	-	-	44	0.14

INCH

VCT.FP

Code	Description	D	d2B	L	d1	d3	l2	h	⚖️
969848	VCT.32 FP-1/4-20	1.26	1/4-20	0.91	0.59	0.39	0.39	0.47	0.02
969897	VCT.40 FP-1/4-20	1.57	1/4-20	1.06	0.67	0.47	0.47	0.71	0.06
969898	VCT.40 FP-5/16-18	1.57	5/16-18	1.06	0.67	0.47	0.47	0.71	0.05
969956	VCT.50 FP-5/16-18	1.97	5/16-18	1.26	0.75	0.59	0.55	0.79	0.08
969957	VCT.50 FP-3/8-16	1.97	3/8-16	1.26	0.75	0.59	0.55	0.79	0.07
970016	VCT.63 FP-5/16-18	2.48	5/16-18	1.46	0.87	0.75	0.63	1.02	0.1
970017	VCT.63 FP-3/8-16	2.48	3/8-16	1.46	0.87	0.75	0.63	1.02	0.09
970018	VCT.63 FP-1/2-13	2.48	1/2-13	1.46	0.87	0.75	0.63	1.02	0.09
970067	VCT.74 FP-1/2-13	2.91	1/2-13	1.71	1.02	0.67	0.87	1.02	0.12

"Max limit Tightening torque" means the max torque value at which the metal insert, in normal conditions of use, is perfectly and strongly anchored to the plastic material.



* Complete with colour index, example: 969851-C2 VCT.32 p-1/4-20x1/2-C2

C9 RAL9005
 C2 RAL2004
 C3 RAL7035
 C4 RAL1021
 C5 RAL5024
 C6 RAL3000
 C17 RAL6017

VCT-p

INCH

Code	Description	D	d2A	L	d1	l	l2	C# [ft lb] [Nm]	⚖️
969809-C9	VCT.25 p-10-24x1-C9	0.98	10-24	0.75	0.51	1.000	0.31	4	0.02
969813-C9	VCT.25 p-10-32x1/2-C9	0.98	10-32	0.75	0.51	0.500	0.31	4	0.02
969815-C9	VCT.25 p-10-32x3/4-C9	0.98	10-32	0.75	0.51	0.750	0.31	4	0.02
969817-C9	VCT.25 p-10-32x1-C9	0.98	10-32	0.75	0.51	1.000	0.31	4	0.02
969823-C9	VCT.25 p-1/4-20x1/2-C9	0.98	1/4-20	0.75	0.51	0.500	0.31	4	0.03
969825-C9	VCT.25 p-1/4-20x3/4-C9	0.98	1/4-20	0.75	0.51	0.750	0.31	4	0.04
969827-C9	VCT.25 p-1/4-20x1-C9	0.98	1/4-20	0.75	0.51	1.000	0.31	4	0.04
969831-C9	VCT.25 p-5/16-18x1/2-C9	0.98	5/16-18	0.75	0.51	0.500	0.31	4	0.03
969851-*	VCT.32 p-1/4-20x1/2-*	1.26	1/4-20	0.91	0.59	0.500	0.39	6	0.03
969852-*	VCT.32 p-1/4-20x3/4-*	1.26	1/4-20	0.91	0.59	0.750	0.39	6	0.04
969854-*	VCT.32 p-1/4-20x1-*	1.26	1/4-20	0.91	0.59	1.000	0.39	6	0.04
969855-*	VCT.32 p-1/4-20x1¼-*	1.26	1/4-20	0.91	0.59	1.250	0.39	6	0.04
969856-*	VCT.32 p-1/4-20x1½-*	1.26	1/4-20	0.91	0.59	1.500	0.39	6	0.04
969861-*	VCT.32 p-5/16-18x3/4-*	1.26	5/16-18	0.91	0.59	0.750	0.39	6	0.04
969863-*	VCT.32 p-5/16-18x1-*	1.26	5/16-18	0.91	0.59	1.000	0.39	6	0.05
969901-*	VCT.40 p-1/4-20x1/2-*	1.57	1/4-20	1.06	0.67	0.500	0.47	10	0.04
969902-*	VCT.40 p-1/4-20x3/4-*	1.57	1/4-20	1.06	0.67	0.750	0.47	10	0.04
969903-*	VCT.40 p-1/4-20x1-*	1.57	1/4-20	1.06	0.67	1.000	0.47	10	0.05
969910-*	VCT.40 p-5/16-18x1/2-*	1.57	5/16-18	1.06	0.67	0.500	0.47	12	0.06
969911-*	VCT.40 p-5/16-18x3/4-*	1.57	5/16-18	1.06	0.67	0.750	0.47	12	0.06
969913-*	VCT.40 p-5/16-18x1-*	1.57	5/16-18	1.06	0.67	1.000	0.47	12	0.07
969915-*	VCT.40 p-5/16-18x1¼-*	1.57	5/16-18	1.06	0.67	1.250	0.47	12	0.07
969917-*	VCT.40 p-5/16-18x1½-*	1.57	5/16-18	1.06	0.67	1.500	0.47	12	0.08
969961-*	VCT.50 p-5/16-18x1-*	1.97	5/16-18	1.26	0.75	1.000	0.55	12	0.07
969965-*	VCT.50 p-5/16-18x1½-*	1.97	5/16-18	1.26	0.75	1.500	0.55	12	0.09
969966-*	VCT.50 p-5/16-18x1¾-*	1.97	5/16-18	1.26	0.75	1.750	0.55	12	0.09
969967-*	VCT.50 p-5/16-18x2-*	1.97	5/16-18	1.26	0.75	2.000	0.55	12	0.09
969969-*	VCT.50 p-3/8-16x3/4-*	1.97	3/8-16	1.26	0.75	0.750	0.55	17	0.1
969971-*	VCT.50 p-3/8-16x1-*	1.97	3/8-16	1.26	0.75	1.000	0.55	17	0.11
969973-*	VCT.50 p-3/8-16x1¼-*	1.97	3/8-16	1.26	0.75	1.250	0.55	17	0.12
969975-*	VCT.50 p-3/8-16x1½-*	1.97	3/8-16	1.26	0.75	1.500	0.55	17	0.13
970021-*	VCT.63 p-3/8-16x3/4-*	2.48	3/8-16	1.46	0.87	0.750	0.63	27	0.12
970022-*	VCT.63 p-3/8-16x1-*	2.48	3/8-16	1.46	0.87	1.000	0.63	27	0.13
970023-*	VCT.63 p-3/8-16x1¼-*	2.48	3/8-16	1.46	0.87	1.250	0.63	27	0.15
970024-*	VCT.63 p-3/8-16x1½-*	2.48	3/8-16	1.46	0.87	1.500	0.63	27	0.16
970027-*	VCT.63 p-3/8-16x2-*	2.48	3/8-16	1.46	0.87	2.000	0.63	27	0.17
970032-*	VCT.63 p-1/2-13x1½-*	2.48	1/2-13	1.46	0.87	1.500	0.63	34	0.18
970034-*	VCT.63 p-1/2-13x2-*	2.48	1/2-13	1.46	0.87	2.000	0.63	34	0.19
970081-*	VCT.74 p-3/8-16x1-*	2.91	3/8-16	1.71	1.02	1.000	0.87	34	0.21
970083-*	VCT.74 p-1/2-13x1¼-*	2.91	1/2-13	1.71	1.02	1.250	0.87	50	0.22
970085-*	VCT.74 p-1/2-13x2-*	2.91	1/2-13	1.71	1.02	2.000	0.87	50	0.23

"Max limit Tightening torque" means the max torque value at which the metal insert, in normal conditions of use, is perfectly and strongly anchored to the plastic material.

