

# Actuator

704.030.5



<https://eao.com/p/704.030.5>

Your product:

---



## 704.030.5 Actuator

### FRONT

<b>Front form:</b>	round
<b>Front bezel material:</b>	Plastic
<b>Front bezel colour:</b>	Grey
<b>Front dimension:</b>	Ø 29 mm

### MOUNTING

<b>Design:</b>	raised
----------------	--------

### OPERATING-/INDICATION PART

<b>Lens shape:</b>	flush
<b>Lens optics:</b>	transparent
<b>Lens material:</b>	Plastic
<b>Illumination colour:</b>	Green
<b>Lens colour:</b>	Green
<b>Lens illumination:</b>	illuminative

### ELECTRICAL CHARACTERISTICS

<b>Standards:</b>	The switches comply with the "Standards for low-voltage switching devices" DIN EN 60947-1
-------------------	---

### MECHANICAL CHARACTERISTIC

<b>Operating Travel:</b>	ca. 5.8 mm ± 0.2 mm
<b>Switching action:</b>	Momentary

**Terminal:** Screw terminal

**Mechanical lifetime:** ≤3 Mio. cycles of operation

**Weight:** 0.056 kg

**Operating force:** 8 N

### AMBIENT CONDITION

**Storage temperature:** - 40 °C ... + 85 °C

**Operating temperature:** - 40 °C ... + 55 °C

**IP Protection:** IP65 front side

### OTHER

**Housing material:** Plastic

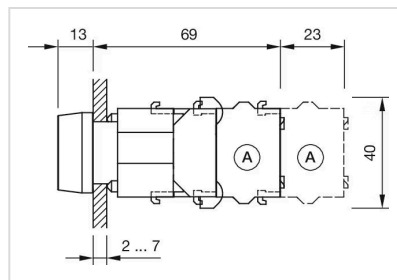
**Short Description:** Actuator, Ø 29 mm, flush, illuminative, Green, Plastic, transparent, round, Grey, Plastic, Momentary, Screw terminal, Green

**Hints:** Frontring with protective cover to be mounted with a torque of 0.4 Nm onto actuator, Max. 3 switching elements can be clipped on

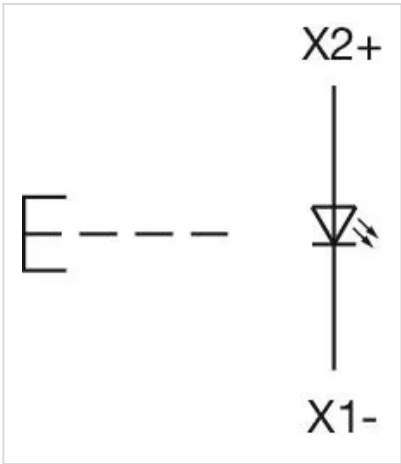
**Housing colour:** Grey

**max. number of switching elements:** 3

**Dimension drawings:**



**Wiring diagrams:**



**Mounting cut-outs:**

