

Actuator

704.631.1



<https://eao.com/p/704.631.1>

Your product:



704.631.1 Actuator

OPERATING-/INDICATION PART

Lens illumination: illuminative

ELECTRICAL CHARACTERISTICS

Standards: The switches comply with the "Standards for low-voltage switching devices" DIN EN 60947-1

MECHANICAL CHARACTERISTIC

Weight: 0.009 kg

Mechanical lifetime: ≤3 Mio. cycles of operation

Operating Travel: ca. 5.8 mm ± 0.2 mm

Operating force: 8 N

Switching action: Momentary

AMBIENT CONDITION

Storage temperature: - 40 °C ... + 85 °C

Operating temperature: - 40 °C ... + 55 °C

IP Protection: IP65 front side

OTHER

Short Description: Actuator, illuminative, Momentary

Hints: Max. 3 switching elements can be clipped on

max. number of switching elements: 3

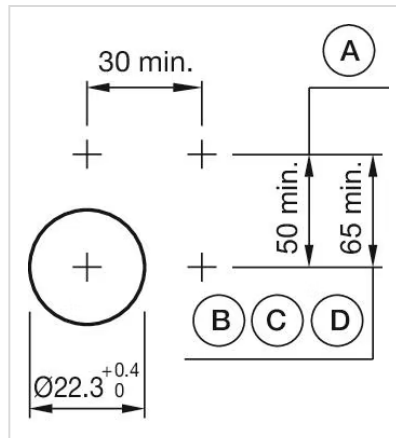
Housing material:

Plastic

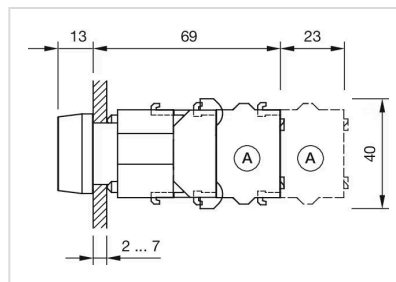
Housing colour:

Grey

Mounting cut-outs:



Dimension drawings:



Wiring diagrams:

