

Actuator

704.731.0



<https://eao.com/p/704.731.0>

Your product:



704.731.0 Actuator

FRONT

Front dimension: 30 mm x 30 mm

Front form: square

MOUNTING

Design: raised

OPERATING-/INDICATION PART

Lens illumination: illuminative

ELECTRICAL CHARACTERISTICS

Standards: The switches comply with the "Standards for low-voltage switching devices" DIN EN 60947-1

MECHANICAL CHARACTERISTIC

Weight: 0.009 kg

Mechanical lifetime: ≤3 Mio. cycles of operation

Switching action: Momentary

Operating force: 8 N

Operating Travel: ca. 5.8 mm ± 0.2 mm

AMBIENT CONDITION

Storage temperature: - 40 °C ... + 85 °C

IP Protection: IP65 front side

Operating temperature: - 40 °C ... + 55 °C

OTHER

max. number of switching elements: 3

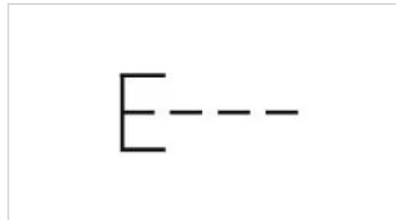
Housing colour: Black

Hints: Max. 3 switching elements can be clipped on

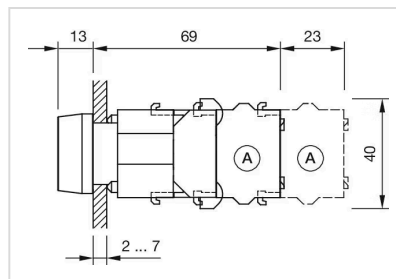
Short Description: Actuator, 30 mm x 30 mm, illuminative, square, Momentary

Housing material: Plastic

Wiring diagrams:



Dimension drawings:



Mounting cut-outs:

