

# Illuminated pushbutton Ø 22 mm silver contact

82-6152.1114.B002



<https://eao.com/p/82-6152.1114.B002>

Your product:

---



82-6152.1114.B002  
Illuminated pushbutton Ø  
22 mm silver contact

#### FRONT

**Front bezel material:** Stainless steel

#### MOUNTING

**Mounting cut-out:** Ø 22 mm

#### OPERATING-/INDICATION PART

**Lens optics:** opaque

**Illumination colour:** Red

**Lens material:** Stainless steel

**Lens illumination:** illuminative

**Lens shape:** flush

**Lens colour:** Silver

**Shape of illumination:** Ring

#### ELECTRICAL CHARACTERISTICS

**Thermal current I<sub>th</sub>:** 5 A

**Rated insulation voltage U<sub>i</sub>:** 250 V

**Contacts:** 1 C

**Electric strength:** 1500 VAC, 50 Hz 1 minute between life terminals and ground

**Electrical lifetime:** 50 000 cycles of operation

**Pollution degree:** 2, according to EN IEC 60947-1

**Rated Operational Voltage U<sub>e</sub>:** 250 VAC

<b>Operating voltage:</b>	24 V AC/DC	
<b>Switching voltage and switching current:</b>	according to IEC 60947-5-1 (Silver contacts)	
	Service categorie AC-15	
	Voltage	Current
	24 VAC	1 A
	35 VAC	1 A (M12 versio
	110 VAC	1 A
	220 VAC	0.5 A
	Switch rating DC service categorie DC-13 (Silver contacts)	
	Voltage	Current
	24 VDC	0.7 A
	35 VDC	0.5 A (M12 vers
	110 VDC	0.2 A
	220 VDC	0.1 A
	according to UL 508 (Silver contacts)	
	cosφ 0,75 ... 0,8	
	Voltage	Current
	120 VAC	5 A
	240 VAC	3 A
	24 VAC	1 A

## MECHANICAL CHARACTERISTIC

<b>Operating force:</b>	4 N ... 7 N
<b>Operating Travel:</b>	ca. 3 mm
<b>Contact material:</b>	Silver
<b>Switching system:</b>	Snap-action switching element
<b>Terminal:</b>	Screw terminal
<b>Switching action:</b>	Momentary
<b>Weight:</b>	0.018 kg
<b>Tightening torque:</b>	0.5 ... 0.6 Nm, Screw terminal 0.1 Nm
<b>Mechanical lifetime:</b>	1 Mio. cycles of operation

## AMBIENT CONDITION

<b>Vibration resistance:</b>	10 ... 500 Hz, amplitude 1.5 mm p-p according to IEC 60068-2-6
<b>Climate resistance:</b>	Damp heat, 21 days according to IEC 60512-11
<b>Storage temperature:</b>	- 40 °C ... + 80 °C
<b>Shock resistance:</b>	Max. 500 m / s <sup>2</sup> as per IEC 60068-2-27
<b>Operating temperature:</b>	- 30 °C ... + 70 °C

## CERTIFICATE

**Approbations:** CB, CCC, C UL, UL

**Conformities:** CE, 2011 / 65 / EC (RoHS), 2014 / 35 / EU (LVD)

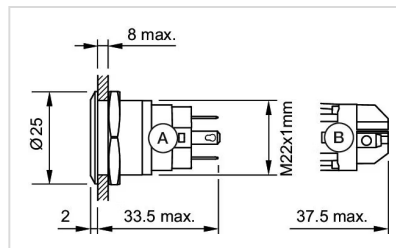
**OTHER**

**Short Description:** Illuminated pushbutton Ø 22 mm silver contact, Momentary, 24 V AC/DC, 1 C, Screw terminal, Stainless steel, Red, Standby, Silver

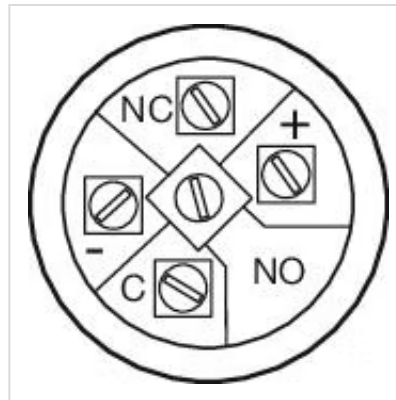
**Symbol:** Standby

**Kind of illumination:** Single-LED

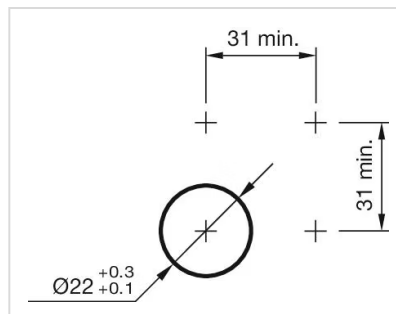
**Dimension drawings:**



**Component layouts:**



**Mounting cut-outs:**



**Wiring diagrams:**

