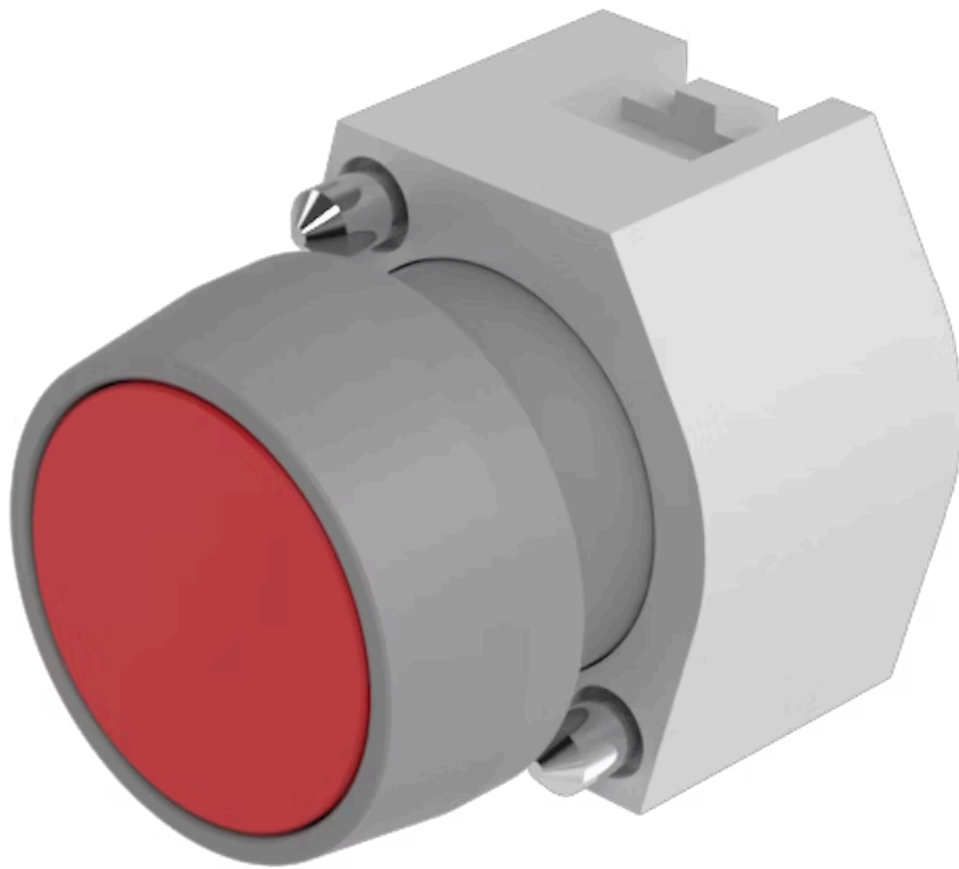


Actuator

704.010.2



<https://eao.com/p/704.010.2>

Your product:



704.010.2 Actuator

FRONT

Front form:	round
Front dimension:	Ø 29 mm
Front bezel colour:	Grey
Front bezel material:	Plastic

MOUNTING

Design:	raised
----------------	--------

OPERATING-/INDICATION PART

Lens material:	Plastic
Lens shape:	flush
Lens colour:	Red
Lens optics:	transparent
Lens illumination:	non illuminative

ELECTRICAL CHARACTERISTICS

Standards:	The switches comply with the "Standards for low-voltage switching devices" DIN EN 60947-1
-------------------	---

MECHANICAL CHARACTERISTIC

Switching action:	Momentary
Mechanical lifetime:	≤3 Mio. cycles of operation
Operating force:	8 N

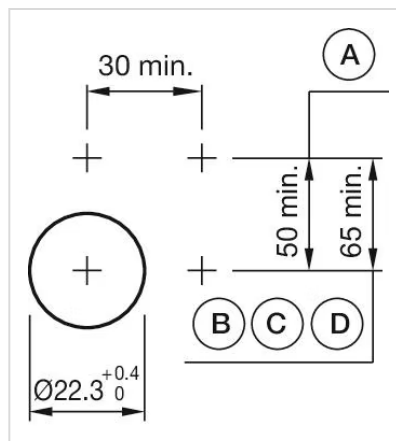
Weight: 0.04 kg
Operating Travel: ca. 5.8 mm ± 0.2 mm

AMBIENT CONDITION

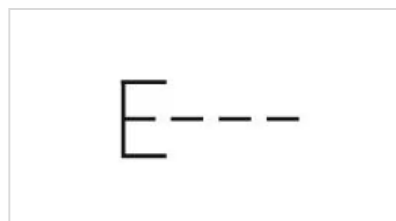
Storage temperature: - 40 °C ... + 85 °C
Operating temperature: - 40 °C ... + 55 °C
IP Protection: IP65 front side

OTHER

Housing material: Plastic
Short Description: Actuator, Ø 29 mm, flush, non illuminative, Red, Plastic, transparent, round, Grey, Plastic, Momentary
Housing colour: Grey
Hints: Frontring with protective cover to be mounted with a torque of 0.4 Nm onto actuator,Max. 3 switching elements can be clipped on
max. number of switching elements: 3
Mounting cut-outs:



Wiring diagrams:



Dimension drawings:

