

Actuator

51-
425.036



<https://eao.com/p/51-425.036>

Your product:



51-425.036 Actuator

FRONT

Front bezel colour:	Black
Front bezel material:	Plastic
Front dimension:	24 mm x 18 mm

MOUNTING

Design:	raised
----------------	--------

OPERATING-/INDICATION PART

Lens illumination:	illuminative
---------------------------	--------------

ELECTRICAL CHARACTERISTICS

Electric strength:	2500 VAC, 50 Hz, 1 min. between all terminals and earth, according to IEC 61058-1, part 15
Contacts:	1 NO
Switching voltage and switching current:	100 mA at 42 VAC/VDC

MECHANICAL CHARACTERISTIC

Switching system:	<p>This low-level switching element was designed for switching low powers in electronic circuits. The mechanism assures reliable switching of loads ranging from a few $\mu\text{A}/\mu\text{V}$ up to 100 mA/ 42 VAC/DC.</p> <p>Single-break momentary contact, as normally open or normally closed with 4 independent points of contact. 2 momentary contacts per switching element; combination of normally open and normally closed is possible.</p> <p>Special features are the long life, extremely short rebound time and stable contact resistance.</p>
Operating force:	1,8 ... 3,5 N

Tightening torque:	Fixing nut max. 0.5 Nm
Switching action:	Momentary
Mechanical lifetime:	1 Mio. cycles of operation
Contact material:	Gold
Terminal:	Universal terminal, 2 x 0.5 mm
Weight:	0.007 kg
Operating Travel:	3 mm
Switching system:	Low-level element

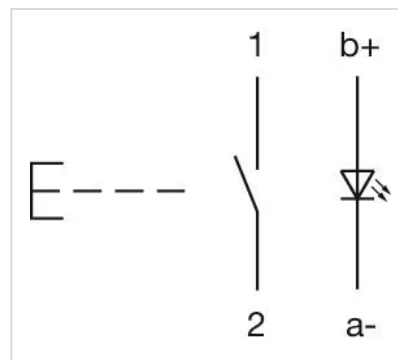
AMBIENT CONDITION

Operating temperature:	- 25 °C ... + 55 °C, mounted as a block, make sure the heat can escape freely
IP front protection:	IP65, according to DIN EN 60529
Shock resistance:	15 g for 11 ms, as per DIN / EN 60512-4-3, DIN / EN 60068-2-27 (Single impacts, semi-sinusoidal)

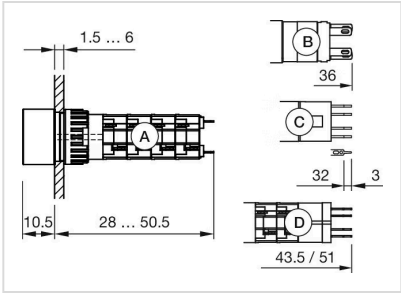
OTHER

Internal size:	21,5 mm x 15,3 mm
Housing colour:	Black
Short Description:	Actuator, 24 mm x 18 mm, illuminative, Black, Plastic, 1 NO, Momentary, Universal terminal, 2 x 0.5 mm, IP65, according to DIN EN 60529

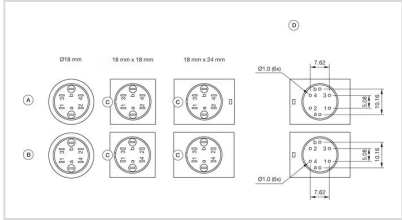
Wiring diagrams:



Dimension drawings:



Component layouts:



Mounting cut-outs:

