

Illuminated pushbutton Ø 22 mm silver contact

82-6151.1134



<https://eao.com/p/82-6151.1134>

Your product:



82-6151.1134

Illuminated pushbutton Ø 22 mm silver contact

FRONT

Front bezel material: Stainless steel

MOUNTING

Mounting cut-out: Ø 22 mm

OPERATING-/INDICATION PART

Lens colour: Silver

Lens material: Stainless steel

Lens optics: opaque

Lens shape: flush

Illumination colour: Green

Shape of illumination: Ring

Lens illumination: illuminative

ELECTRICAL CHARACTERISTICS

Electrical lifetime: 50 000 cycles of operation

Switching voltage and switching current:

according to IEC 60947-5-1 (Silver contacts)

Service categorie AC-15

Voltage

24 VAC

35 VAC

110 VAC

220 VAC

Switch rating DC service categorie DC-13 (Silver contacts)

Voltage

24 VDC

35 VDC

110 VDC

220 VDC

Current

1 A

1 A (M12 versio

1 A

0.5 A

Current

0.7 A

0.5 A (M12 vers

0.2 A

0.1 A

according to UL 508 (Silver contacts)

$\cos\phi$ 0,75 ... 0,8

Voltage

120 VAC

240 VAC

24 VAC

Current

5 A

3 A

1 A

Thermal current I_{th}:	5 A
Rated insulation voltage U_i:	250 V
Contacts:	1 C
Electric strength:	1500 VAC, 50 Hz 1 minute between live terminals and ground
Pollution degree:	2, according to EN IEC 60947-1
Operating voltage:	24 V AC/DC
Rated Operational Voltage U_e:	250 VAC

MECHANICAL CHARACTERISTIC

Operating Travel:	ca. 3 mm
Weight:	0.018 kg
Mechanical lifetime:	1 Mio. cycles of operation
Switching action:	Momentary
Operating force:	4 N ... 7 N
Terminal:	Soldering terminal, 2.8 x 0.5 mm
Switching system:	Snap-action switching element
Tightening torque:	0.5 ... 0.6 Nm
Contact material:	Silver

AMBIENT CONDITION

Operating temperature:	- 30 °C ... + 70 °C
Climate resistance:	Damp heat, 21 days according to IEC 60512-11
Storage temperature:	- 40 °C ... + 80 °C
Vibration resistance:	10 ... 500 Hz, amplitude 1.5 mm p-p according to IEC 60068-2-6
Shock resistance:	Max. 500 m / s ² as per IEC 60068-2-27

CERTIFICATE

Approbations:	CB, CCC, C UL, UL
----------------------	-------------------

Conformities:

CE, 2011 / 65 / EC (RoHS), 2014 / 35 / EU (LVD)

OTHER

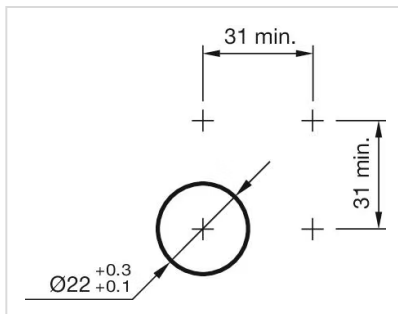
Kind of illumination:

Single-LED

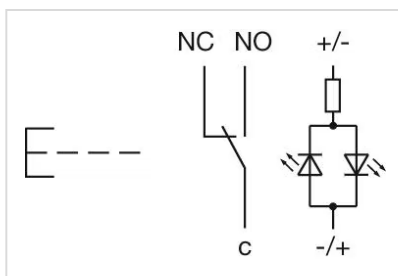
Short Description:

Illuminated pushbutton Ø 22 mm silver contact, Momentary, 24 V AC/DC, 1 C, Soldering terminal, 2.8 x 0.5 mm, Stainless steel, Green, Silver

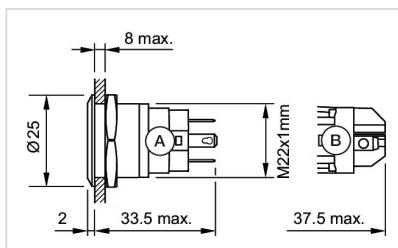
Mounting cut-outs:



Wiring diagrams:



Dimension drawings:



Component layouts:

