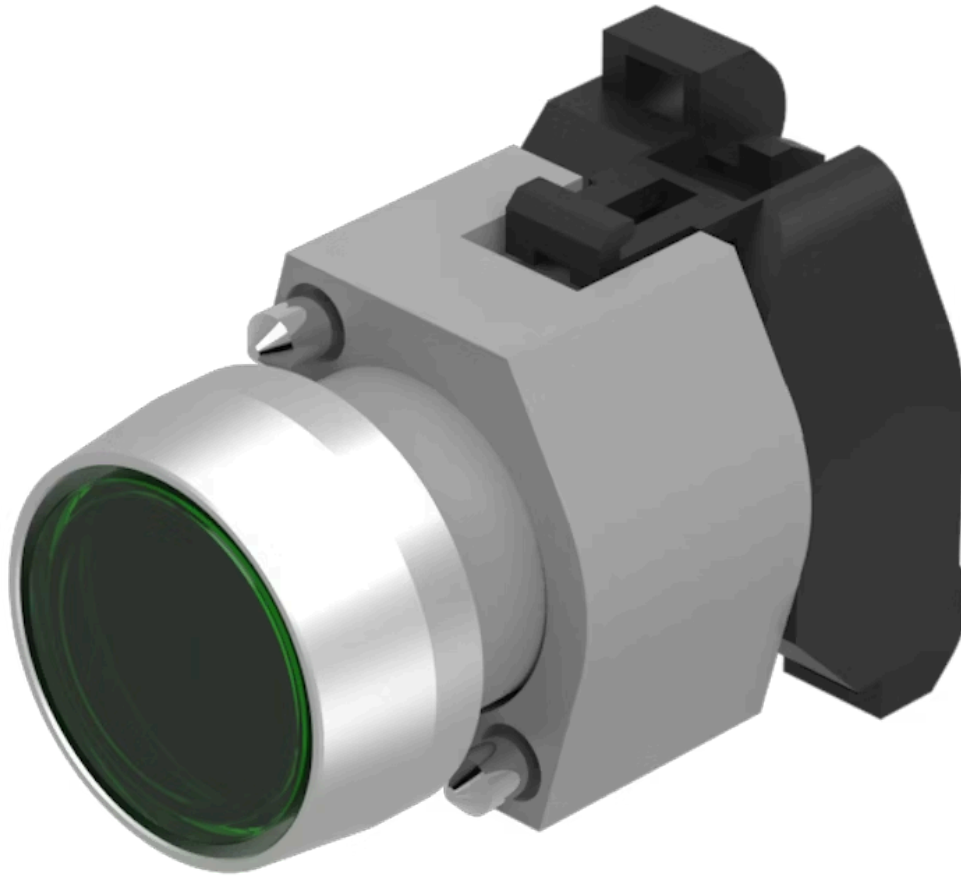


Actuator

704.062.5



<https://eao.com/p/704.062.5>

Your product:



704.062.5 Actuator

FRONT

Front bezel material:	Aluminium
Front dimension:	Ø 29 mm
Front bezel colour:	Nature
Front form:	round

MOUNTING

Design:	raised
----------------	--------

OPERATING-/INDICATION PART

Lens illumination:	illuminative
Lens optics:	transparent
Lens material:	Plastic
Lens shape:	flush
Lens colour:	Green
Illumination colour:	Green

ELECTRICAL CHARACTERISTICS

Standards:	The switches comply with the "Standards for low-voltage switching devices" DIN EN 60947-1
-------------------	---

MECHANICAL CHARACTERISTIC

Terminal:	Screw terminal
Weight:	0.056 kg

Operating Travel: ca. 5.8 mm ± 0.2 mm
Operating force: 8 N
Switching action: Maintained
Mechanical lifetime: ≤3 Mio. cycles of operation

AMBIENT CONDITION

IP Protection: IP65 front side
Operating temperature: - 40 °C ... + 55 °C
Storage temperature: - 40 °C ... + 85 °C

OTHER

Housing material: Plastic

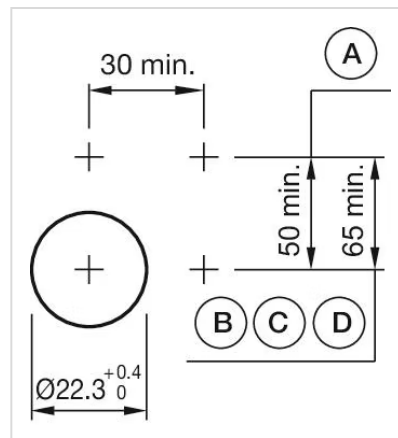
Short Description: Actuator, Ø 29 mm, flush, illuminative, Green, Plastic, transparent, round, Nature, Aluminium, anodised, Maintained, Screw terminal, Green

Hints: Frontring with protective cover to be mounted with a torque of 0.4 Nm onto actuator, Max. 3 switching elements can be clipped on

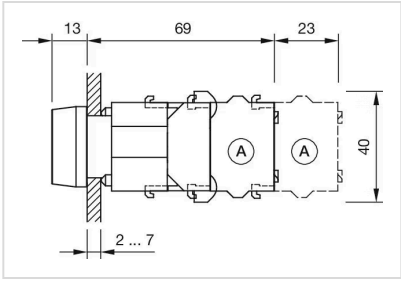
Housing colour: Grey

max. number of switching elements: 3

Mounting cut-outs:



Dimension drawings:



Wiring diagrams:

