

FEATURES

- Easy installation
- Compact and reliable
- Finger protection
- Padlockable for added security
- Single hole for front mounting
- 90° switching angle
- Forced open contacts
- Terminal screws in open contacts
- All switch rating at AC22
- Maximum panel thickness 3mm
- Minimum depth behind panel 102mm
- Maximum depth behind panel 117mm
- Actuator dimensions 64x64x32mm
- IP65 product rating (protection from total dust ingress)

RS PRO Non-Fused Switch Disconnectors

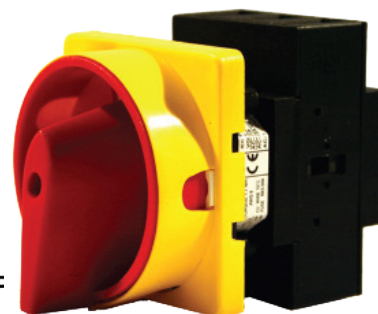
RS Stock No.: 466138

Allied SKU: 70822674



RS Professionally Approved Products bring to you professional quality parts across all product categories. Our product range has been tested by engineers and provides a comparable quality to the leading brands without paying a premium price.

RS Part Number: **466-138** Specifications and dimensions



- Back of door mounting load break switch
- Red/Yellow handle padlockable

Dimensions	
Back of panel switch:	
Height	87 mm
Width	68 mm
Depth	56 mm
Handle:	
Height	64 mm
Width	64 mm
Depth	42 mm
Weight	0.265 Kg
Features	
Rated operational voltage Ue IEC &EN	690 V
Rated operational voltage Ue UL	600 V
Rated impulse withstand voltage Uimp	6 kV
Rated uninterrupted current Iu	63 A
Rated operational current Ie AC22A	63 A
Rated operational current Ie AC21A	80 A
Rated operational current Ie AC1	80 A
Rated operational power AC23A (50/60Hz) 230V	30 kW
Rated operational power AC23A (50/60Hz) 415V	37 kW
Rated operational power AC23A (50/60Hz) 690V	45 kW
Rated operational power AC3 (50/60Hz) 230V	22 kW
Rated operational power AC3 (50/60Hz) 415V	22 kW
Rated operational power AC3 (50/60Hz) 690V	30 kW
UL power rating 3 phase DOL 110V	7.5 hp
UL power rating 3 phase DOL 230V	15 hp
UL power rating 3 phase DOL 480V	25 hp
UL power rating 3 phase DOL 600V	30 hp
UL power rating 1 phase DOL 110V	3 hp
UL power rating 1 phase DOL 230V	7.5 hp
UL short circuit fuse rating class J	70 A
UL rated fused short circuit current	10 kA
IEC short circuit capacity max fuse size GI	63 A
IEC rated fused short circuit current	30 kA
Maximum terminal capacity	25 mm ²
Recommended tightening torque	2.0 Nm
Related Products	
Main Pole Contact	466-201

Product Description

This Panel Mount Non- fused isolator switch from our high-quality own brand RS PRO is designed for use with low voltage switchgear such as power distribution, load isolation and motor start/stop.

General Specifications

Number of Poles	3
Accepts Padlocks	Yes
Handle Type	Handle included
Handle Colour	Red
Applications	This Panel Mount Non- fused isolator switch from our high-quality own brand RS PRO is designed for use with low voltage switchgear such as power distribution, load isolation and motor start/stop.

Electrical Specifications

Rated operational voltage Ue IEC &EN	690 V
Rated operational voltage Ue UL	600 V
Rated impulse withstand voltage Uimp	6 kV
Rated uninterrupted current Iu	63 A
Rated operational current Ie AC22A	63 A
Rated operational current Ie AC21A	80 A

Rated operational current Ie AC1	80 A
Rated operational power AC23A (50/60Hz) 230V	30 kW
Rated operational power AC23A (50/60Hz) 415V	37 kW
Rated operational power AC23A (50/60Hz) 690V	45 kW
Rated operational power AC3 (50/60Hz) 230V	22 kW
Rated operational power AC3 (50/60Hz) 415V	22 kW
Rated operational power AC3 (50/60Hz) 690V	30 kW
UL power rating 3 phase DOL 110V	7.5 hp
UL power rating 3 phase DOL 230V	15 hp
UL power rating 3 phase DOL 480V	25 hp
UL power rating 3 phase DOL 600V	30 hp
UL power rating 1 phase DOL 110V	3 hp
UL power rating 1 phase DOL 230V	7.5 hp
UL short circuit fuse rating class J	70 A
UL rated fused short circuit current	10 kA
IEC short circuit capacity max fuse size GI	63 A
IEC rated fused short circuit current	30 kA
Maximum terminal capacity	25 mm ²

Mechanical Specifications

Mounting Type	Panel mount
Length/ Height	87mm
Width	68mm
Depth	56mm
Handle Length	64 mm
Handle Width	64 mm
Handle Depth	42 mm
Shaft Weight	0.265 Kg
Recommended Tightening Torque	2.0Nm

Protection Category

IP Rating	IP65
-----------	------

Approvals

Compliance/Certifications	CSA, ANSI/UL 508
Declarations	Statement of conformity

Similar Products

Parameters	Stock#773-7960	Stock#773-8002	Stock#773-8018	Stock#773-8008
Brand	RS RPO	RS RPO	RS RPO	RS RPO
Number of Poles	4	3	3	4
Accepts Padlocks	Yes	Yes	Yes	Yes
Auxiliary Contacts Available		Yes	Yes	Yes
Electrical Phase	3	3	3	3
Maximum Current	25A	25A	63A	63A
Rated Operational Current Ie AC21A	25A	25A	63A	63A
Voltage Rating	690V ac	690V ac	690V ac	690V ac
Rated Operational Power AC23A 440V	11 kW (400V)	11 kW (380-440V)	18.5 kW (440V)	30 kW (380-440V)
Power Rating	11 kW	11 kW	18.5kW	30kW
Switch Rating	5kA	5kA	30kA	30kA
Maximum gL Fuse Size IEC	20A	20A	63A	63A
Rated Fused Short Circuit Capacity IEC	5kA	5kA	30kA	30kA
Maximum Cable Capacity		6mm ²	10mm ²	10mm ²
Mounting Type	Panel Mount	Panel Mount	Panel Mount	Panel Mount
Length	175mm	220mm	220mm	220mm
Width	125mm	145mm	145mm	145mm
Depth	90mm	90mm	90mm	90mm
Depth Including Switch	134mm	134mm	134mm	134mm
Recommended Tightening Torque	1.7Nm	1.7Nm	2Nm	2Nm
IP Rating	IP65	IP54	IP54	IP65
Compliance/Certifications	UL 508, EN60947,	EN60947	UL 508	UL 508, EN60947



Normal Operating Temperature	-25°C to +40°C	-25°C to +40°C	-25°C to +40°C	-25°C to +40°C
Applications	<ul style="list-style-type: none"> • Non-inductive or slightly inductive loads, resistance furnaces • Squirrel - cage motors: starting, switching off motors during running • Control of AC electromagnetic loads • Switching of resistive loads, including moderate overloads • Switching of motor loads or other highly inductive loads • Switching of mixed resistive and inductive loads 	<ul style="list-style-type: none"> • Non-inductive or slightly inductive loads, resistance furnaces • Squirrel - cage motors: starting, switching off motors during running • Control of AC electromagnetic loads • Switching of resistive loads, including moderate overloads • Switching of motor loads or other highly inductive loads • Switching of mixed resistive and inductive loads 	<p>Non-inductive or slightly inductive loads, resistance furnaces, Squirrel - cage motors, Control of AC electromagnetic loads</p>	<ul style="list-style-type: none"> • Non-inductive or slightly inductive loads, resistance furnaces • Squirrel - cage motors: starting, switching off motors during running • AC Control electromagnetic loads • Switching of resistive loads, including moderate overloads • Switching of motor loads or other highly inductive loads • Switching of mixed resistive and inductive loads