



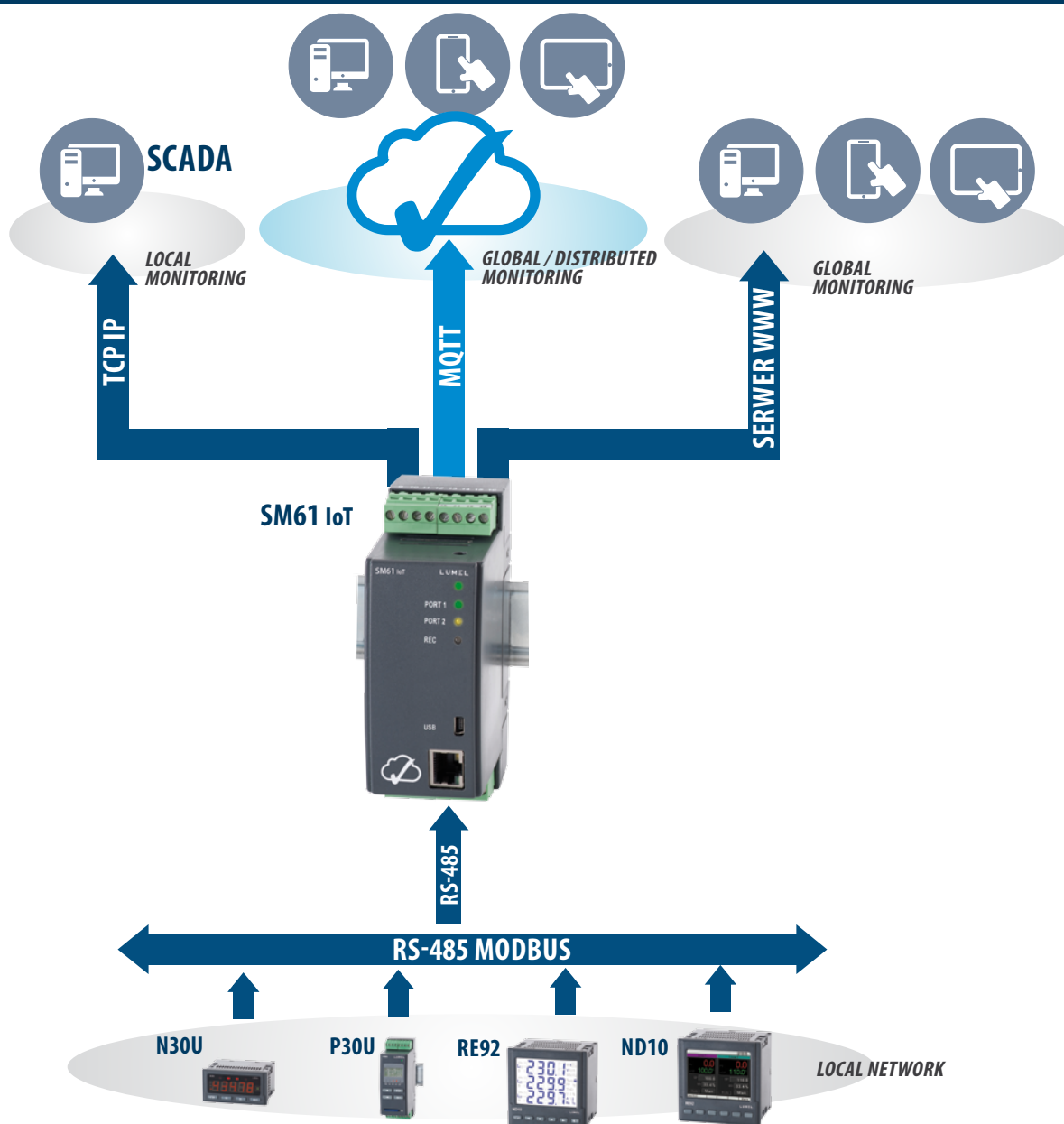
## SM61 IoT

### - DATA LOGGER TO IoT APPLICATIONS

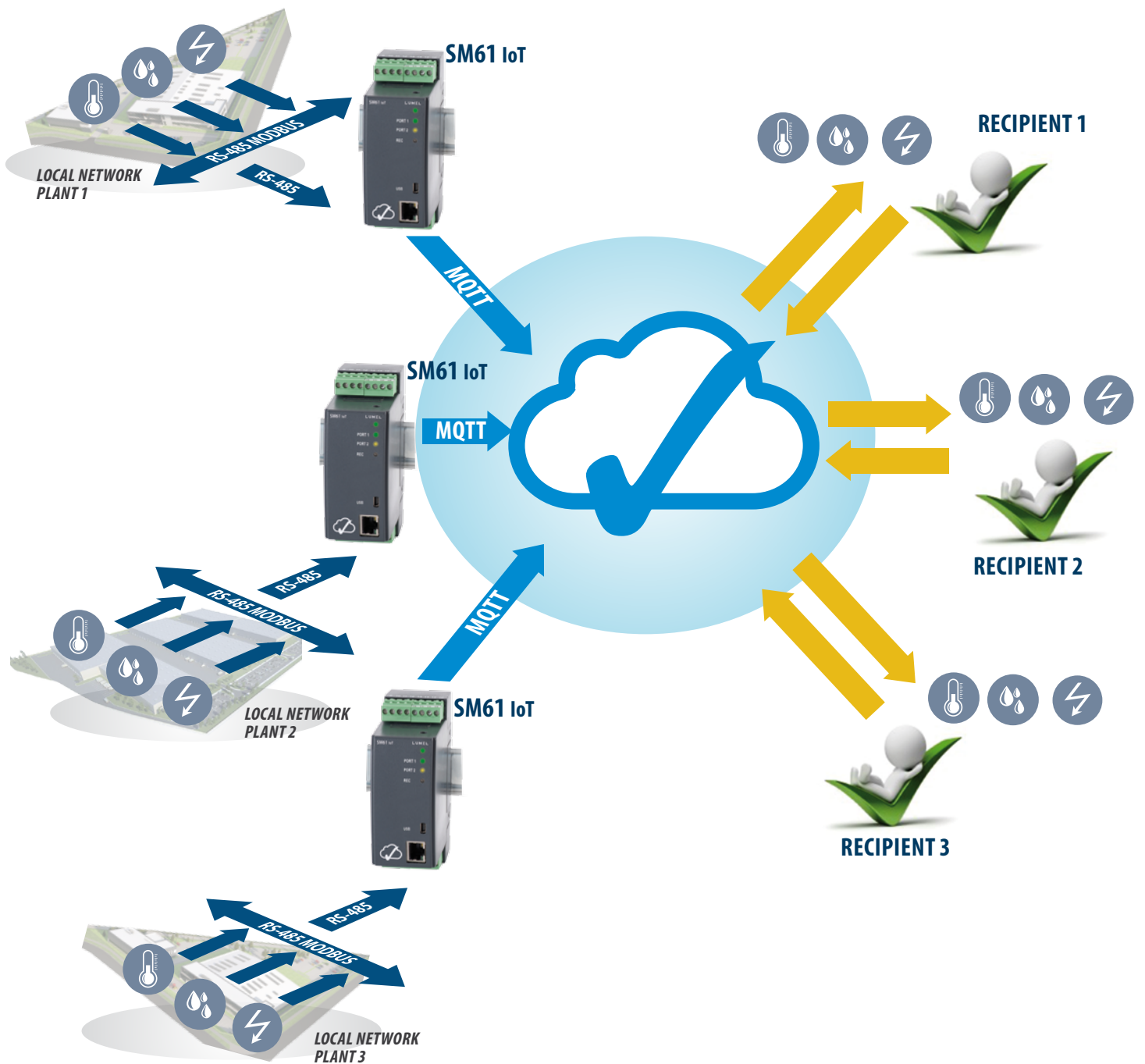
- The MQTT protocol is ideal for communication in distributed acquisition systems data (IoT applications).
- Modbus TCP protocol for communication in SCADA systems.
- Built-in WWW for visualisation of current and archived data according to customer configuration (synoptic maps, charts, tables) by any web browser.
- Readout up to 2500 values from slave devices (up to 100 devices, each 25 registers).
- User-friendly application for data configuration (SM61IoT CONFIG).
- 8 GB Flash memory.
- Built-in FTP server.
- Alarms or binary inputs for control of archiving.
- RTC (real time clock).
- Possibility of simultaneously work by many users.
- User's access control by a password.



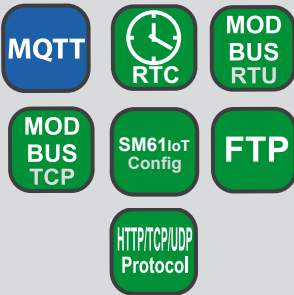
### APPLICATION EXAMPLES



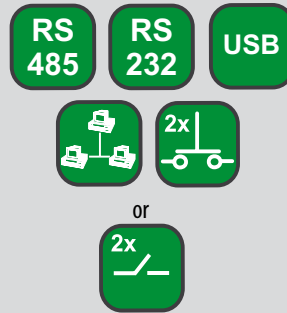
## APPLICATION EXAMPLES



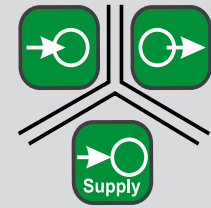
## FEATURES



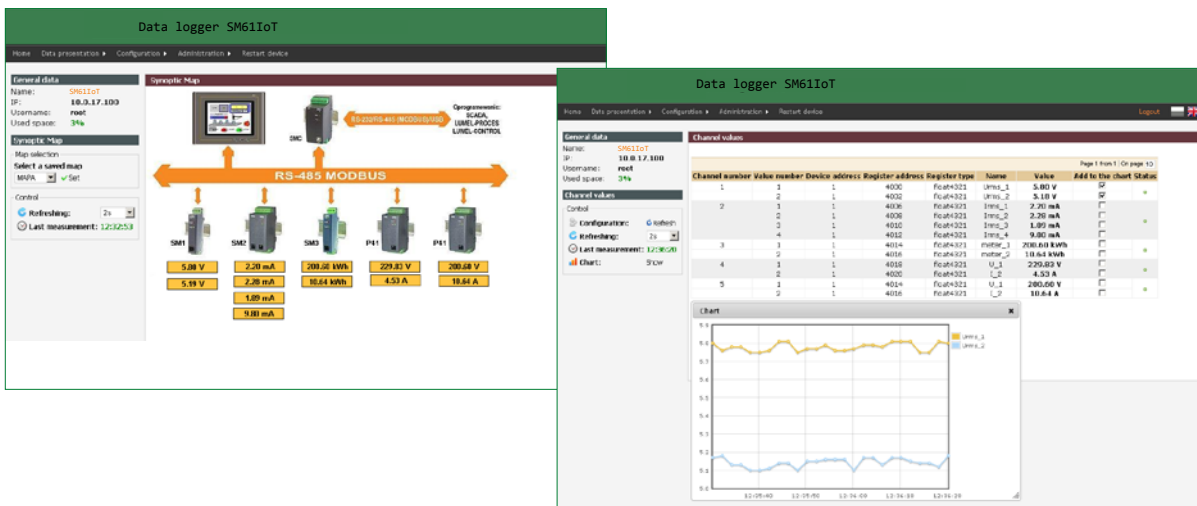
## INPUTS/OUTPUTS



## GALVANIC ISOLATION



## SM61 IoT CONFIGURATION



### Configuration web:

- configuration of IP settings and connection configuration of selected SM61 module,
- channels configuration of SM61 module,
- channels visualization of SM61 module.

## TECHNICAL DATA

### INTERFACE

| Interface             | Port 1:RS-485, RS-232,  | Port 2:RS-485                    | USB   | Ethernet 10/100 Base-T                          |
|-----------------------|---|----------------------------------|---|---|
| Function              | communication with PC and HMI panels and other Master devices             | communication with Slave devices | device configuration                                    | device communication and configuration          |
| Baud rate             | 1200, 2400, 4800, 9600, 19200, 38400, 57600, 115200 bit/s                 |                                  | 115200 bit/s  | 10, 100 Mbit/s                                  |
| Information unit      | 1 start bit, 7 or 8 data bits,<br>1 odd/even parity bit, 1 or 2 stop bits |                                  | 1 start bit, 8 data bits, 1 even parity bit, 1 stop bit | TCP/UDP   |
| Transmission protocol | MODBUS RTU  |                                  |   | MQTT, TCP/IP, HTTP, ICMP, DHCP, ARP, Modbus TCP |
| Remarks               | max. cable length depends on the baud rate                                |                                  | max. cable length: up to 2 m                            | max. cable length: up to 100 m                  |

### EXTERNAL FEATURES

|                                     |                             |                              |  |
|-------------------------------------|-----------------------------|------------------------------|--|
| Weight                              | < 0.25 kg                   |                              |  |
| Overall dimensions                  | 45 × 120 × 100 mm           |                              |  |
| Protection grade (acc. to EN 60529) | from the housing side: IP40 | from the terminal side: IP20 |  |
| Fixing way                          | DIN rail 35 mm              |                              |  |

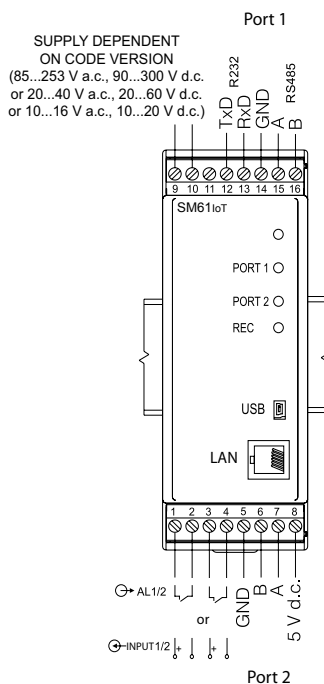
## RATED OPERATING CONDITIONS

|                                |  |  |
|--------------------------------|--|--|
| <b>Supply voltage</b>          | 20...24...40 V a.c., 20...24...60 V d.c.<br>10...16 V a.c., 10...20 V d.c.<br>85...230...253 V a.c., 90...300 V d.c. | power consumption: < 4 VA<br>40...50/60...440 Hz |
| <b>Temperature</b>             | ambient: 0...23...55°C   | storage: -20...70°C                              |
| <b>Relative humidity</b>       | < 95%  | condensation inadmissible                        |
| <b>Operating position</b>      | any  |  |
| <b>External magnetic field</b> | < 400 A/m  |  |

## SAFETY AND COMPATIBILITY REQUIREMENTS

|   |  |                      |
|---|--|----------------------|
| <b>Electromagnetic compatibility</b>            | noise immunity   | acc. to EN 61000-6-2 |
|   | noise emissions  | acc. to EN 61000-6-4 |
| <b>Pollution grade</b>                          | 2  | acc. to EN 61010-1   |
| <b>Installation category</b>                    | III  | acc. to EN 61010-1   |
| <b>Maximal phase-to-earth operating voltage</b> | <ul style="list-style-type: none"> <li>for supply circuits: 300 V</li> <li>for other circuits: 50 V</li> </ul> | acc. to EN 61010-1   |

## CONNECTION DIAGRAM



## ORDERING CODE

| SM61 IoT -                                   | X | X | XX | X  | X |
|--|---|---|----|----|---|
| <b>Supply voltage:</b>                       |   |   |    |    |   |
| 85...253 V a.c., 90...300 V d.c.             | 1 |   |    |    |   |
| 20...40 V a.c., 20...60 V d.c.               | 2 |   |    |    |   |
| 10...16 V a.c., 10...20 V d.c.               | 3 |   |    |    |   |
| <b>Input/output:</b>                         |   |   |    |    |   |
| 2 relay outputs                              |   | 1 |    |    |   |
| 2 binary outputs                             |   |   | 2  |    |   |
| <b>Version:</b>                              |   |   |    |    |   |
| standard version                             |   |   |    | 00 |   |
| custom-made                                  |   |   |    | XX |   |
| <b>language:</b>                             |   |   |    |    |   |
| Polish                                       |   |   |    |    | P |
| English                                      |   |   |    |    | E |
| other*                                       |   |   |    |    | X |
| <b>Acceptance tests:</b>                     |   |   |    |    |   |
| without extra requirements                   |   |   |    |    | 0 |
| with an extra quality inspection certificate |   |   |    |    | 1 |
| acc. to customer's request                   |   |   |    |    | X |

\* - after agreeing with the manufacturer

### Order example:

The code **SM61IoT - 1 2 00 E 1** means meter version with voltage supply 85...253 V a.c., 90...300 V d.c., with 2 binary inputs, standard version, user's manual in English, with an extra quality inspection certificate.

For more information about LUMEL's products  
please visit our website:

[www.lumel.com.pl](http://www.lumel.com.pl)

Join us on Facebook!



SM61IoT-19\_en