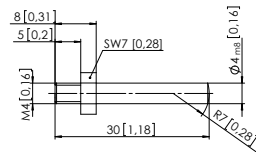


Absolute encoders – multiturn

Compact electronic multiturn, magnetic	Sendix M3668 / M3688 (shaft / hollow shaft)	IO-Link
Mounting accessory for shaft encoders		Order no.
Coupling	Bellows coupling ø 19 mm [0.75"] for shaft 8 mm [0.32"]	8.0000.1102.0808
Mounting accessory for hollow shaft encoders Dimensions in mm [inch]		Order no.
Torque pin, ø 4 mm for flange with spring element (flange type 3 + 6)	with fixing thread 	8.0010.4700.0000
Cables and connectors		Order no.
Preassembled cables	M12 female connector with coupling nut, 4-pin, A coded, straight single-ended 2 m [6.56'] PUR cable	05.00.6061.6211.002M
Connectors	M12 female connector with coupling nut, 4-pin, A coded, straight	05.B8141-0

Further Kübler accessories can be found at: kuebler.com/accessories
 Further Kübler cables and connectors can be found at: kuebler.com/connection-technology

Technical data	
Mechanical characteristics	
Maximum speed	shaft or blind hollow shaft version 6000 min ⁻¹ without shaft seal (IP65) 3000 min ⁻¹ (continuous)
	shaft or blind hollow shaft version 4000 min ⁻¹ with shaft seal (IP67) 2000 min ⁻¹ (continuous)
Starting torque at 20 °C [68 °F]	without shaft seal < 0.007 Nm with shaft seal (IP67) < 0.01 Nm
Shaft load capacity	radial 40 N axial 20 N
Weight	approx. 210 g [7.41 oz]
Protection acc. to EN 60529	IP65 or IP67
Working temperature range	-40 °C ... +85 °C [-40 °F ... +185 °F]
Materials	shaft / hollow shaft stainless steel flange aluminum housing zinc die-cast
Shock resistance acc. to EN 60068-2-27	2500 m/s ² , 6 ms
Vibration resistance acc. to EN 60068-2-6	300 m/s ² , 10 ... 2000 Hz
Electrical characteristics	
Supply voltage	18 ... 30 V DC
Current consumption (no load)	max. 40 mA
Reverse polarity protection of the supply voltage	yes
Interface characteristics IO-Link	
Resolution singleturn	1 ... 16.384 (14 bit), scalable default: 16.384 (14 bit)
Angular measurement deviation ¹⁾	±0,5°
Repeat accuracy	±0,2°
Number of revolutions (multiturn)	1 ... 262.144 (18 bit), scalable only via the total resolution default: 262.144 (18 bit)
Total resolution	4 ... 4.294.967.296 (32 bit), scalable default: 4.294.967.296 (32 bit)
Interface	IO-Link version 1.1 acc. to IEC 61131-9
Profile (details see manual)	Kübler Standard Profile or Smart Sensor Profile
Port classe	Type A
Approvals	
UL compliant in accordance with	File no. E224618
CE compliant in accordance with	EMC Directive 2014/30/EU RoHS Directive 2011/65/EU ATEX Directive 2014/34/EU (for Ex 2/22 variants)

1) Over the whole temperature range.

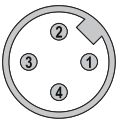
Absolute encoders – multiturn

Compact electronic multiturn, magnetic	Sendix M3668 / M3688 (shaft / hollow shaft)	IO-Link
---	--	----------------

Terminal assignment

Interface	Type of connection	M12 connector, 4-pin				
4	3, 4	Signal:	Supply voltage +V DC	Reserved (no function)	Supply voltage 0 V (GND)	IO-Link communication (Data line)
		Abbreviation:	L+	res.	L-	C/Q
		Pin:	1	2	3	4

Top view of mating side, male contact base



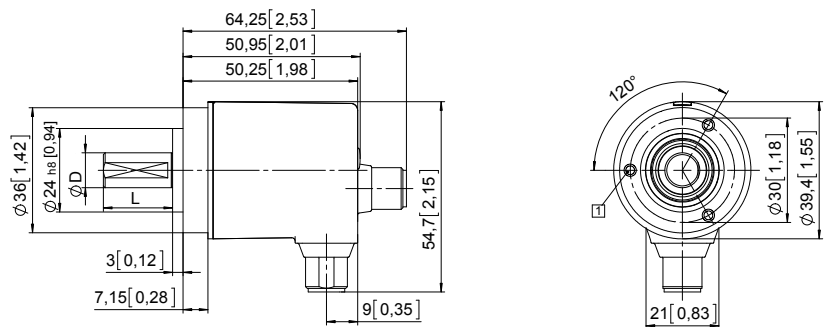
M12 connector, 4-pin

Dimensions shaft version

Dimensions in mm [inch]

Clamping flange, ø 36 [1.42] Flange type 1 and 3

1 3 x M3, 6 [0.24] deep

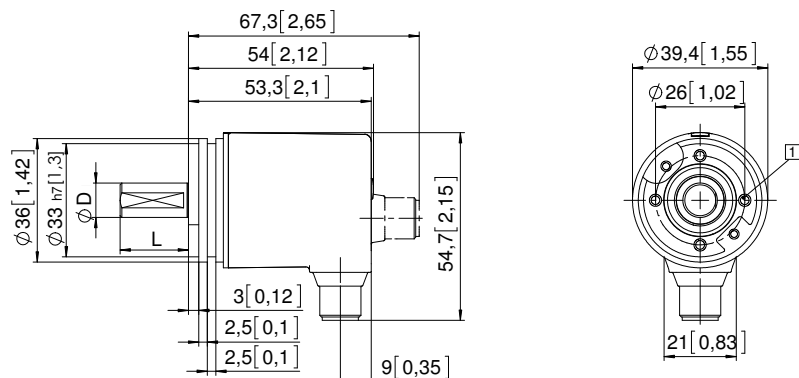


D	Fit	L
6 [0.24]	h7	12,5 [0.49]
8 [0.32]	h7	15 [0.59]
10 [0.39]	f7	20 [0.79]
1/4"	h7	12,5 [0.49]

Synchro flange, ø 36 [1.42]

Flange type 2 and 4

1 4 x M3, 6 [0.24] deep



D	Fit	L
6 [0.24]	h7	12,5 [0.49]
8 [0.32]	h7	15 [0.59]
10 [0.39]	f7	20 [0.79]
1/4"	h7	12,5 [0.49]

Absolute encoders – multiturn

**Compact
electronic multiturn, magnetic**

Sendix M3668 / M3688 (shaft / hollow shaft)

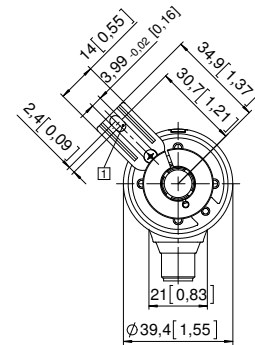
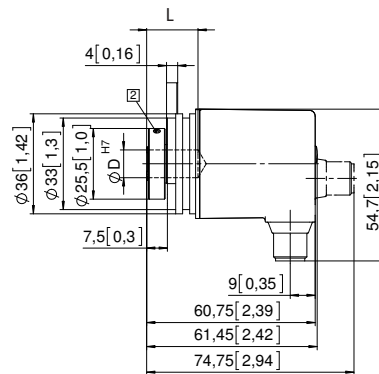
IO-Link

Dimensions hollow shaft version

Dimensions in mm [inch]

Flange with spring element, long Flange type 3 and 6

- 1 Slot spring element, recommendation: torque pin DIN 7, \varnothing 4 [0.16]
- 2 Recommended torque for the clamping ring 0.7 Nm

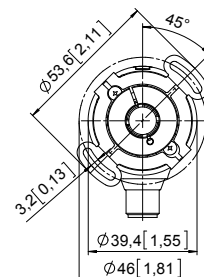
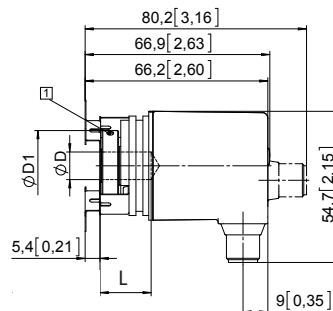


D	Fit	L	D1
6 [0.24]	H7	18,5 [0.73]	24 [0.94]
8 [0.32]	H7	18,5 [0.73]	25,5 [1.00]
10 [0.39]	H7	18,5 [0.73]	25,5 [1.00]
1/4"	H7	18,5 [0.73]	24 [0.94]

L = insertion depth max. blind hollow shaft

Flange with stator coupling, \varnothing 46 [1.81] Flange type 2 and 5

- 1 Recommended torque for the clamping ring 0.7 Nm



D	Passung	L	D1
6 [0.24]	H7	18,5 [0.73]	24 [0.94]
8 [0.32]	H7	18,5 [0.73]	25,5 [1.00]
10 [0.39]	H7	18,5 [0.73]	25,5 [1.00]
1/4"	H7	18,5 [0.73]	24 [0.94]

L = insertion depth max. blind hollow shaft