

# Low power Q8 series

Low power •  
Ø8 mm panel mount LED indicators



## DISTINCTIVE FEATURES

- 5 mm colored diffused epoxy lens
- Prominent and flush bezel styles
- Wire terminations 200 mm



## ENVIRONMENTAL SPECIFICATIONS

- IP67 sealing option (EN60529)
- Operating & Storage Temperature Range:  
Rear epoxy body: -40 °C to +85 °C (-40 °F to +185 °F)



## GENERAL SPECIFICATIONS

- Max Reverse Voltage: 5 V
- Viewing Angle: 30–100° (dependant on model)
- Life Expectancy: 100,000 hours
- Torque: 20 to 25 cNm
- Maximum panel thickness 7 mm
- Insulation resistance : 4,000 MΩ at 500 VDC

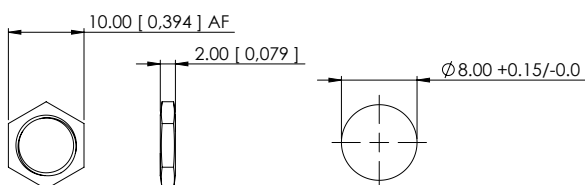


## MATERIALS

- Natural anodized bezels
- Black anodized bezels



## MOUNTING



The company reserves the right to change specifications without notice.

All LED characteristics are dependent upon environmental conditions. Therefore published data should be considered nominal and subject to variations.



# Low power Q8 series

Low power • Ø8 mm panel mount LED indicators



## ELECTRICAL SPECIFICATIONS

### LED COMPONENT SPECIFICATIONS

	Prominent	Flush	Operating current
Red	190 mcd	20 mcd	2 mA
Green	450 mcd	50 mcd	2 mA
Yellow	200 mcd	20 mcd	2 mA
Blue	180 mcd	15 mcd	2 mA

Voltage	Operating Voltage	Operating Current
	(Typical All Types)	(Typical All Types)
03 VDC	3.0 to 3.6 VDC	2 mA
12 VDC	10.8 to 13.2 VDC	2 mA
24 VDC	21.6 to 26.4 VDC	2 mA
28 VDC	25.2 to 30.8 VDC	2 mA

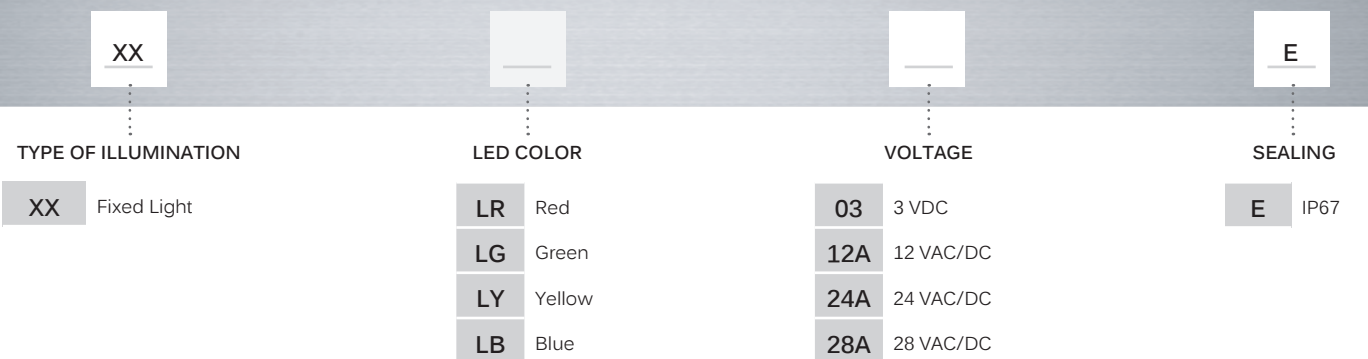
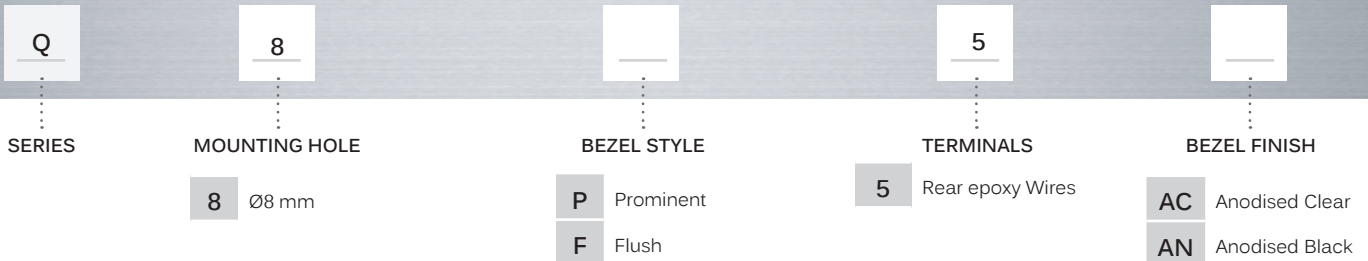
- The operating voltage must not be exceeded by more than 10% as this will result in reduced life expectancy
- Luminous intensity is measured at 2 mA on a discrete led unless otherwise stated.
- Luminous intensities and color of LEDs may vary within a batch.
- Luminous intensity will be reduced with lower operating current.
- Recommended usage: Homogenous light output that is good for indoor and outdoor applications.

# Low power Q8 series

Low power • Ø8 mm panel mount LED indicators



## BUILD YOUR PART NUMBER



## ABOUT THIS SERIES

- ⚠ **Notice:** please note that not all combinations of above numbers are available.
- Standard and Bi-Colour are provided in Standard wire length is 200mm, 24AWG UL1061, Red wire denotes anode (+), Black wire denotes cathode (-) for other lengths consult APEM.

# Low power Q8 series

Ø8 mm panel mount LED indicators

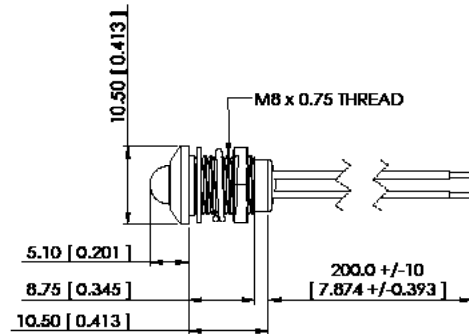
## PROMINENT BEZEL



## FLUSH BEZEL



## REAR EPOXY WIRES



## REAR EPOXY WIRES

