



CorePro MainsFit (UL Type-B) T8

12T8/COR/48-840/MF18/G/DIM 25/1

The CorePro MainsFit (UL Type B) lamps are designed to be the perfect retrofit solution to move from traditional fluorescent lamps to energy saving LEDs. This ballast bypass lamp has everything needed built into the lamp with proven energy savings, long life (up to 50k hours), surge suppression and industry leading safety features. All lamps in the CorePro MainsFit family are double-ended to help simplify the installation. In addition, all lamps meet the Philips standards for light quality so that end users will be in a comfortable environment regardless of the CorePro MainsFit lamp type.

Product data

| General Information | |
|---------------------|---------------------------------|
| Cap-Base | G13 [Medium Bi-Pin Fluorescent] |
| Nominal lifetime | 50,000 hour(s) |
| Switching Cycle | 50,000 |
| Lighting Technology | LED |
| EU RoHS compliant | Yes |

| Light Technical | |
|------------------------------------|--------------------|
| Color Code | 840 [CCT of 4000K] |
| Beam Angle (Nom) | 240 degree(s) |
| Luminous Flux | 1,800 lm |
| Color Designation | Cool White (CW) |
| Correlated Color Temperature (Nom) | 4000 K |
| Luminous Efficacy (rated) (Nom) | 150.00 lm/W |
| Color Consistency | 6SCDM |
| Color rendering index (CRI) | 80 |

| LLMF At End Of Nominal Lifetime (Nom) 70 % | |
|--|--|
|--|--|

| Operating and Electrical | |
|---------------------------|-------------|
| Line Frequency | 50 to 60 Hz |
| Input Frequency | 50 to 60 Hz |
| Power Consumption | 12 W |
| Lamp Current (Max) | 104 mA |
| Lamp Current (Min) | 48 mA |
| Wattage Equivalent | 32 W |
| Starting Time (Nom) | 0.5 s |
| Warm-up time to 60% light | 0.5 s |
| Power Factor (Fraction) | 0.9 |
| Voltage (Nom) | 120-277 V |
| UL Type | UL Type B |

| Temperature | |
|---------------------------|-----------------|
| Ambient temperature range | -4 °F to 113 °F |

CorePro MainsFit (UL Type-B) T8

| | |
|---------------------------------|---|
| T-Case Maximum (Nom) | 158 °F |
| Controls and Dimming | |
| Dimmable | Only with specific dimmers |
| Mechanical and Housing | |
| Bulb Finish | Frosted |
| Bulb Material | Glass |
| Product Length | 47-1/4 inch |
| Bulb Shape | T8 |
| Approval and Application | |
| Energy Saving Product | Yes |
| Approval Marks | RoHS compliance UL certificate DLC compliance |

Application Conditions

| | |
|-------------------------------------|-----|
| can it be used in closed luminaires | Yes |
|-------------------------------------|-----|

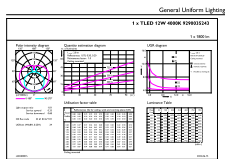
Product Data

| | |
|---------------------------------|---------------------------------|
| Order product name | 12T8/COR/48-840/MF18/G/DIM 25/1 |
| Full product name | 12T8/COR/48-840/MF18/G/DIM 25/1 |
| Order code | 579383 |
| Material Nr. (12NC) | 929003524304 |
| Numerator - Quantity Per Pack | 1 |
| EAN/UPC - Product/Case | 046677579388 |
| Numerator - Packs per outer box | 25 |
| EAN/UPC - Case | 50046677579383 |

Dimensional drawing

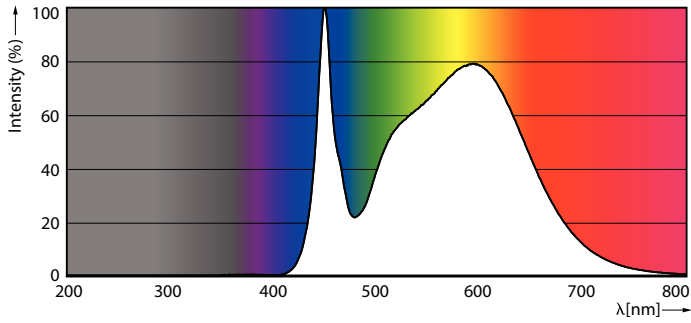
| Product | D1 | D2 | A1 | A2 | A3 |
|---------------------------------|-------------|------------|--------------|-------------|-------------|
| 12T8/COR/48-840/MF18/G/DIM 25/1 | 1-1/16 inch | 1-1/8 inch | 47-3/16 inch | 47-1/2 inch | 47-3/4 inch |

Photometric data



CorePro MainsFit (UL Type-B) T8

Photometric data

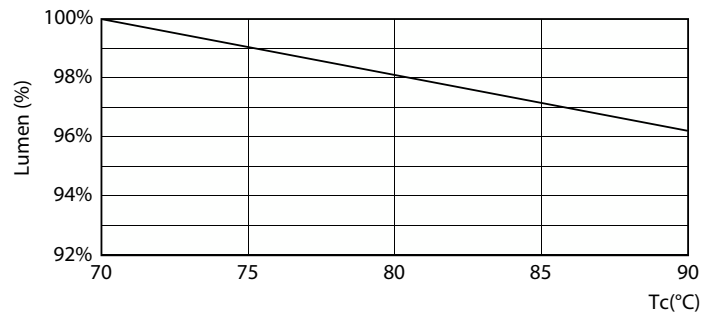


Spectral Power Distribution Colour - 12T8/COR/48-840/MF18/G/DIM 25/1

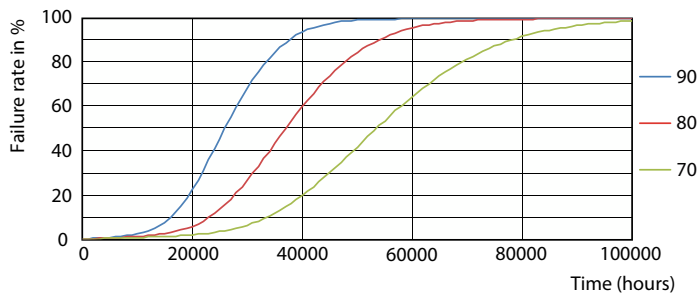
Lifetime



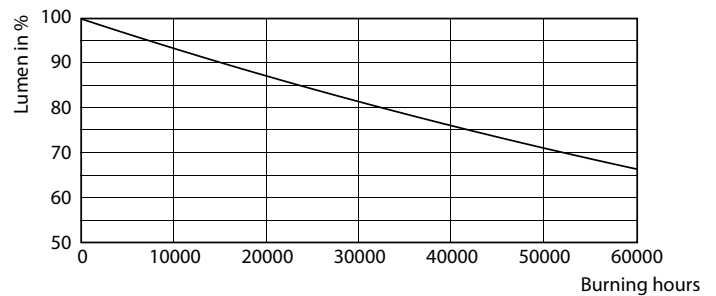
Life Expectancy Diagram - 12T8/COR/48-840/MF18/G/DIM 25/1



Lumen Maintenance Diagram - 12T8/COR/48-840/MF18/G/DIM 25/1



Life Expectancy Diagram - 12T8/COR/48-840/MF18/G/DIM 25/1



Lumen Maintenance Diagram - 12T8/COR/48-840/MF18/G/DIM 25/1

CorePro MainsFit (UL Type-B) T8

Lifetime



Life Expectancy Diagram - 12T8/COR/48-840/MF18/G/DIM 25/1

