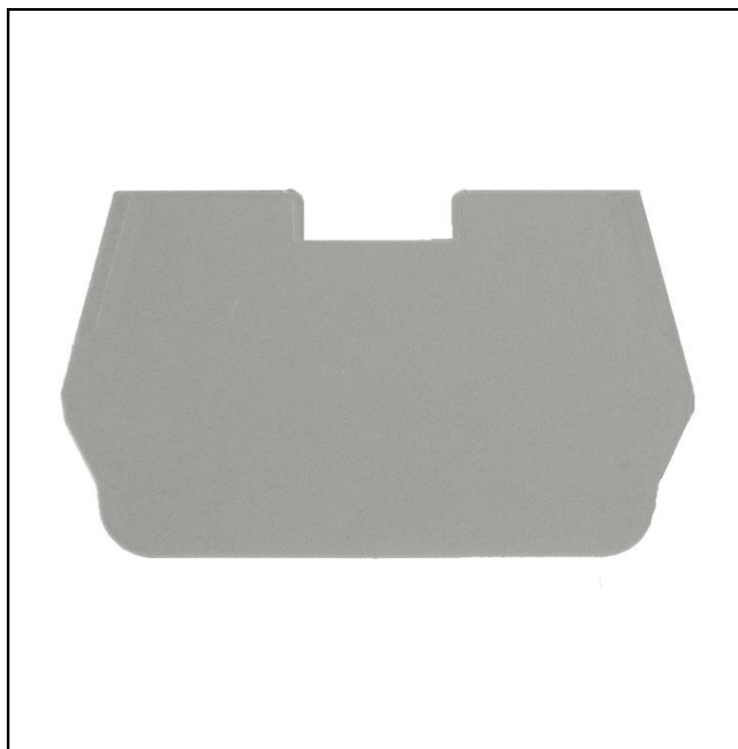


FEATURES

- End plate
- Width 1 mm
- Grey

RS PRO Full series end plate for flat-type component holder terminal blocks

RS Stock No.: 2624246



RS Professionally Approved Products bring to you professional quality parts across all product categories. Our product range has been tested by engineers and provides a comparable quality to the leading brands without paying a premium price.

Product Description

End plates are normally used at the end of a row of terminals. it is necessary to insert end plates to ensure that contact protection is maintained when terminals of different sizes are used within the same terminal block.

The outer dimensions of the end plates correspond to the dimensions of the terminals.

The use of end plates increases air and creepage distances, which in turn affect voltage values.

Locking pegs ensure that end plates can be mounted quickly.

Mechanical Specifications

Insulating Material	PA 66 – V0
Length	57.8 mm
Height	33 mm
Width	1 mm
Weight	2 g

Additional information

EAN	-
Custom Tariff Number	85389099

Technical Drawings

