

4.1/9.5 Mini DIN Fixed Torque Wrench in Click Type 22mm Bit that is Pre-set to 90 in-lbs

Fairview Microwave's 4.1/9.5 Mini DIN torque wrench, part number ST-4195, is a 22mm bit click type that is preset to 90 in-lbs and designed to use with 4.1/9.5 Mini DIN connectors. This click type 4.1/9.5 Mini DIN torque wrench allows accurate mating force when assembling and disassembling a variety of RF coaxial connectors. The unique feature of click type RF wrenches is that once the preset torque value is reached, they will "click" which can be heard and felt, followed by a slight bend at the head, alerting the user to stop applying torque to the connector. Fairview Microwave's click type 4.1/9.5 Mini DIN torque wrenches are in-stock and also available for a wide variety of other RF connectors, all of which ship the same day.

Configuration

Torque Type	Fixed
Design Type	Click
Hex Size	22 mm
Torque Setting	90 in-lbs [10.17 Nm]
Torque Accuracy Percentage	±4 %

Size

Length	9.07 in [230.38 mm]
Handle Diameter	0.875 in [22.23 mm]
Width	3.9 in [99.06 mm]
Height	0.95 in [24.13 mm]
Weight	0.7785 lbs [353.12 g]
Handle Color	Red

Compliance Certifications (see [product page](#) for current document)

Notes:

- Do not use on damaged connectors.
- To improve performance of a wrench that hasn't been used recently, actuate the wrench by clicking the wrench head back and forth several times before use. This will spread the lubricant through the internal mechanism.
- Click type tools require smooth consistent application of force. Each torquing action should be completed within 2 seconds. Slower or faster torquing action will detract from accuracy.

4.1/9.5 Mini DIN Fixed Torque Wrench in Click Type 22mm Bit that is Pre-set to 90 in-lbs from Fairview Microwave is in-stock and available to ship same-day. All of our RF/microwave products are available off-the-shelf from our ISO 9001:2008 certified facilities in Lewisville, Texas. Fairview Microwave is RF on-demand.

For additional information on this product, please click the following link: [4.1/9.5 Mini DIN Fixed Torque Wrench in Click Type 22mm Bit that is Pre-set to 90 in-lbs ST-4195](#)

URL: <https://www.fairviewmicrowave.com/4.1-9.5-mini-din-fixed-torque-wrench-click-st-4195-p.aspx>

The information contained in this document is accurate to the best of our knowledge and representative of the part described herein. It may be necessary to make modifications to the part and/or the documentation of the part, in order to implement improvements. Fairview Microwave reserves the right to make such changes as required. Unless otherwise stated, all specifications are nominal. Fairview Microwave does not make any representation or warranty regarding the suitability of the part described herein for any particular purpose, and Fairview Microwave does not assume any liability arising out of the use of any part or documentation.



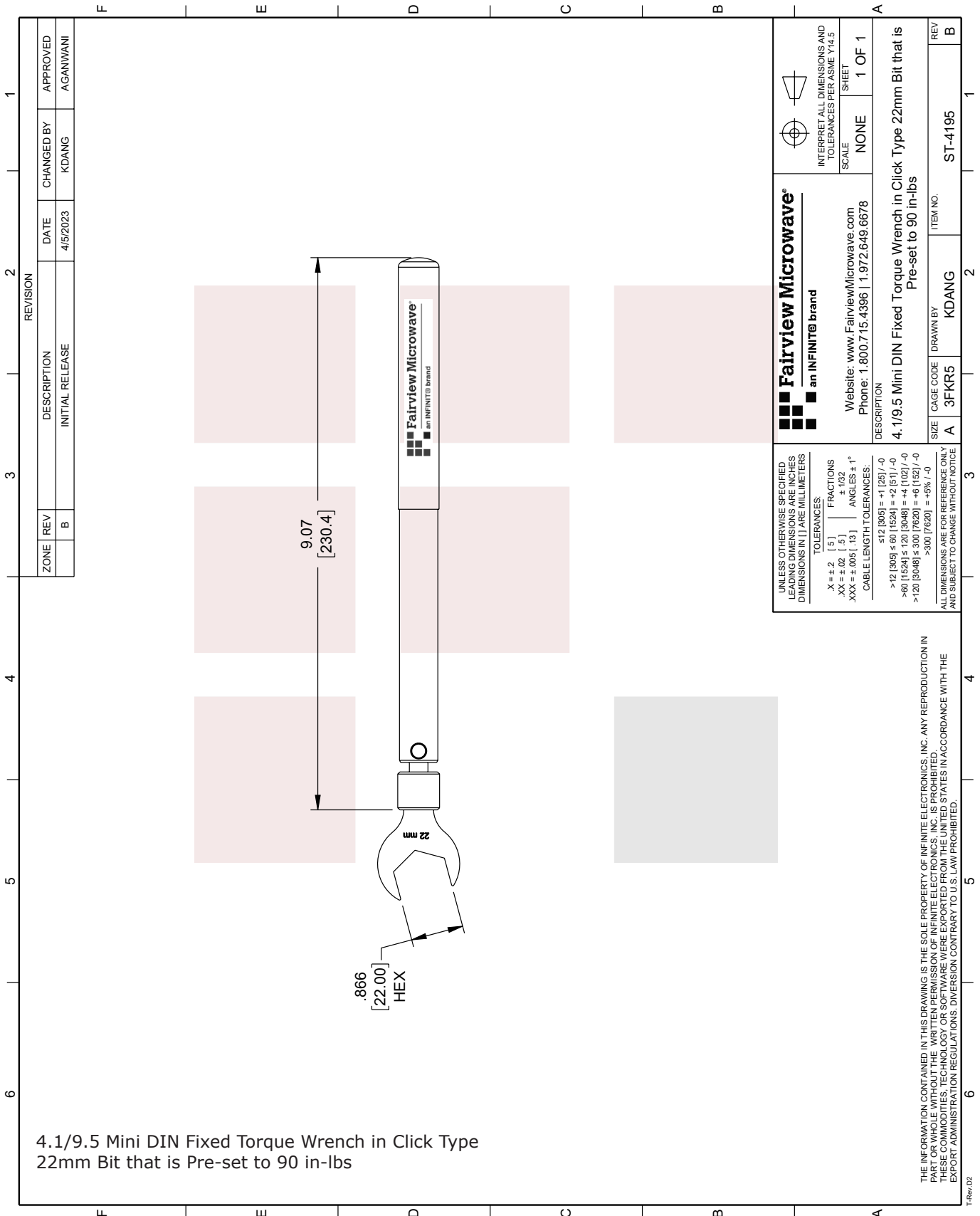
Features:

- Designed for continual use
- Torque wrench will "click" once preset torque value is achieved
- Designed to avoid over torque

Applications:

- Attaching test cables in lab environments
- Final production attachment of product
- Field install and testing applications
- Anytime accurate torque is needed while avoiding over-torque

Fairview Microwave
 301 Leora Ln., Suite 100
 Lewisville, TX 75056
 Tel: 1-800-715-4396 / (972) 649-6678
 Fax: (972) 649-6689
www.fairviewmicrowave.com
sales@fairviewmicrowave.com



4.1/9.5 Mini DIN Fixed Torque Wrench in Click Type
22mm Bit that is Pre-set to 90 in-lbs

ZONE		REV	DESCRIPTION	DATE	CHANGED BY	APPROVED
		B	INITIAL RELEASE	4/5/2023	KDANG	AGANWANI

REVISION		DESCRIPTION	DATE	CHANGED BY	APPROVED
1					
2					
3					
4					
5					
6					

<p>Fairview Microwave an INFINIT[®] brand</p> <p>Website: www.FairviewMicrowave.com Phone: 1.800.715.4396 1.972.649.6678</p>	<p>INTERPRET ALL DIMENSIONS AND TOLERANCES PER ASME Y14.5 SHEET</p>
	<p>SCALE: NONE</p> <p>SHEET: 1 OF 1</p>
<p>DESCRIPTION</p> <p>4.1/9.5 Mini DIN Fixed Torque Wrench in Click Type 22mm Bit that is Pre-set to 90 in-lbs</p>	
<p>SIZE: A</p> <p>CAGE CODE: 3FKR5</p> <p>DRAWN BY: KDANG</p>	<p>ITEM NO.: ST-4195</p> <p>REV: B</p>

UNLESS OTHERWISE SPECIFIED, LEADING DIMENSIONS ARE IN INCHES DIMENSIONS IN [] ARE MILLIMETERS

TOLERANCES:

.X = ±.2	[.5]	FRACTIONS
.XX = ±.02	[.5]	± 1/32
.XXX = ±.005	[.13]	ANGLES ± 1°

CABLE LENGTH TOLERANCES:

<12 [305]	±.12 [3.05]	±.005
>12 [305] ≤ 60 [1524]	±.25 [6.35]	±.01
>60 [1524] ≤ 120 [3048]	±.50 [12.70]	±.02
>120 [3048] ≤ 300 [7620]	±1.00 [25.40]	±.04
>300 [7620]	±2.00 [50.80]	±.08

ALL DIMENSIONS ARE FOR REFERENCE ONLY AND SUBJECT TO CHANGE WITHOUT NOTICE

THE INFORMATION CONTAINED IN THIS DRAWING IS THE SOLE PROPERTY OF INFINITE ELECTRONICS, INC. ANY REPRODUCTION IN PART OR WHOLE WITHOUT THE WRITTEN PERMISSION OF INFINITE ELECTRONICS, INC. IS PROHIBITED. THESE COMMODITIES, TECHNOLOGY OR SOFTWARE WERE EXPORTED FROM THE UNITED STATES IN ACCORDANCE WITH THE EXPORT ADMINISTRATION REGULATIONS. DIVERSION CONTRARY TO U.S. LAW PROHIBITED.