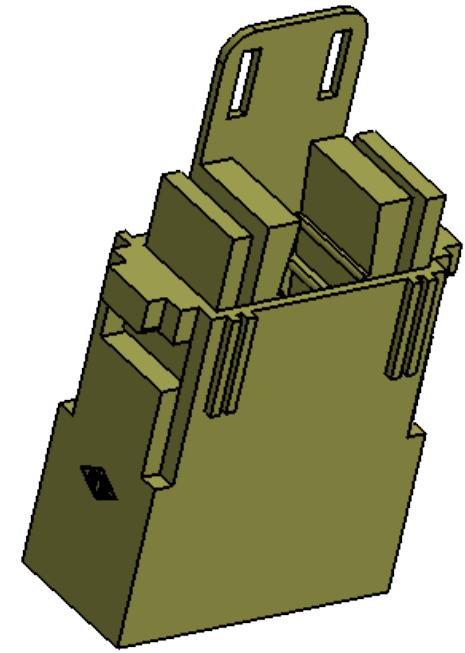
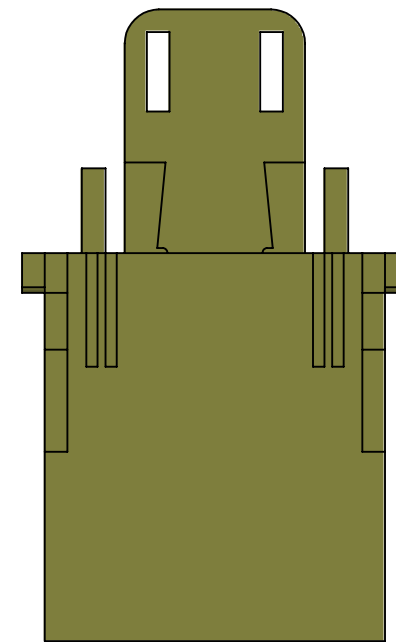
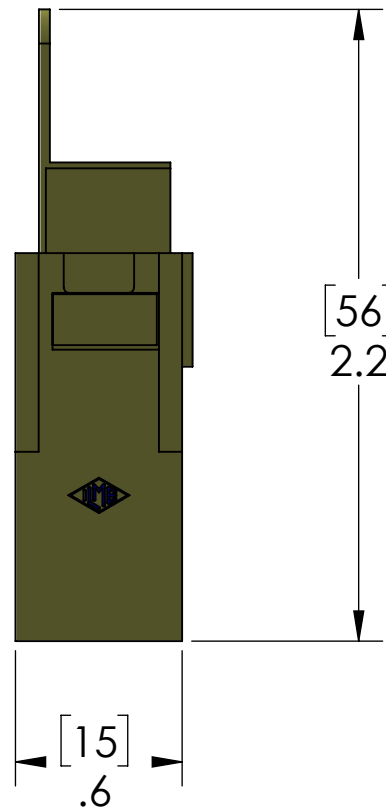
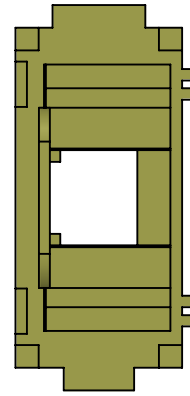
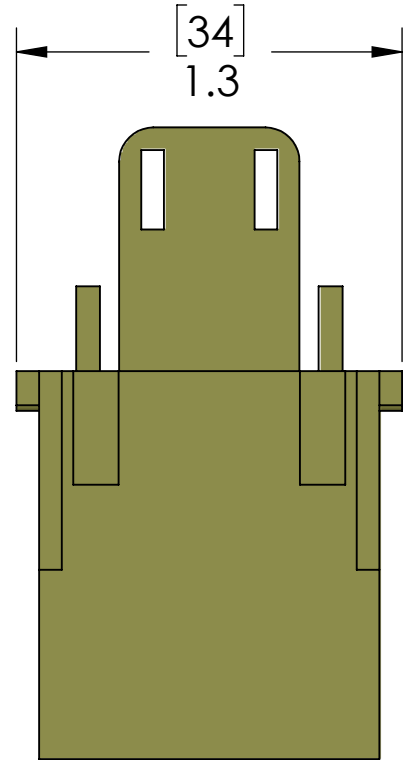


Brief description: male insert, housing for RJ45 connectors,
for 1 RJ45 crimp connector, part number CX-8J6M,
1 module, modular units series MIXO



The modular inserts must be installed in suitable frames which are then mounted in traditional housings or COB panel support

HOUSING MATERIALS	
BODY:	SELF-EXTINGISHING THERMOPLASTIC
CHARACTERISTICS	
TYPE:	FOR 1 RJ45 CRIMP CONNECTOR, CX-8J6M
EN 61984:	1A 50V 0.8kV 3
IP PROTECTION:	IP20 without enclosure; IP65/IP66/IP67/IP68 with enclosure
MECHANICAL LIFE:	>= 500 CYCLES
TEMP. RANGE:	-40C TO +70C
RECOMMENDED	FIX THE CABLE WITH CABLE TIE
APPROVALS	
QUALITY MARK:	; EAC

PROPRIETARY AND CONFIDENTIAL
THE INFORMATION CONTAINED IN THIS DRAWING IS THE SOLE PROPERTY OF MENCOM CORPORATION. ANY REPRODUCTION IN PART OR AS A WHOLE WITHOUT THE WRITTEN PERMISSION OF MENCOM CORPORATION IS PROHIBITED.

UNLESS OTHERWISE SPECIFIED: DIMENSIONS ARE IN INCHES AND [MM]	DRAWN BY	DCG
	DRAWN DATE	03/14/2018
	CHECKED BY	ADM
	CHECK DATE	03/14/2018
COMMENTS:		
MATERIAL		
FINISH		
DO NOT SCALE DRAWING		

MENCOM CORPORATION		
TITLE: 1 PL MIXO MALE RJ45 CAT6 INSERT		
SIZE B	DWG. NO. CX-01-J8M	REV A
SCALE: 3:2	WEIGHT:	SHEET 1 OF 1