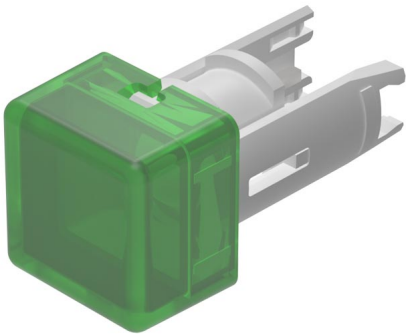


# EAO – Your Expert Partner for Human Machine Interfaces

## 18-951.5L - Lens with LED raised design

### 18-951.5L - Lens with LED raised design



*Attention: The preview is based on a sample product. This can differ from your current configuration.*

### Other Attributes

Weight	0.001 kg
Dimension	7.5 x 7.5 mm

### Operating-/Indication part

Lens optics	translucent
Lens material	Plastic
Lens colour	green
Lens profile	flat
Lens illumination	illuminative