

8100 SA 10 Zyklop Metal Ratchet Set with push-through square, 1/4" drive, imperial , 28 pieces  
The Zyklop Ratchets, 1/4"



**EAN:** 4013288173904  
**Part number:** 05004020001  
**Article number:** 8100 SA 10

**Size:** 205x90x50 mm  
**Weight:** 684 g  
**Country of origin:** CZ  
**Customs tariff number:** 82041100



- Extremely slim ratchet with long lever
- Very robust without any restrictions on torque
- Return angle of only 4.7°
- Absolutely smooth switchover of the non-detachable push-through square
- Take it easy tool finder with colour coding according to sizes

Incredibly compact set arrangement with many tools in a minimum of space. A completely new ratchet set feeling thanks to the unique textile boxes that are very robust and durable. They can be positioned upright for tidy storage on the workshop shelf. Additional surface protection due to textile outer material. Low weight and volume for simpler mobility. "Take it easy" Tool Finder with colour coding according to sizes.

**Web link**

[http://products.wera.de/en/tools\\_for\\_the\\_aerospace\\_segment\\_ratchets\\_the\\_zyklop\\_ratchets\\_1\\_4\\_8100\\_sa\\_10.html](http://products.wera.de/en/tools_for_the_aerospace_segment_ratchets_the_zyklop_ratchets_1_4_8100_sa_10.html)

Wera - 8100 SA 10  
05004020001 - 4013288173904

Wera Werkzeuge GmbH  
Korzter Straße 21-25  
D-42349 Wuppertal  
Tel: +49 (0)2 02 / 40 45-0  
E-Mail: [info@wera.de](mailto:info@wera.de)

**8100 SA 10 Zyklop Metal Ratchet Set with push-through square, 1/4" drive,  
imperial , 28 pieces**  
The Zyklop Ratchets, 1/4"



**Set contents:**



**8003 A**  
05004003001 1 x 1/4"x141.0



**8790 HMA**  
05003514001 1 x 3/16"x23.0  
05003515001 1 x 7/32"x23.0  
05003516001 1 x 1/4"x23.0  
05003517001 1 x 9/32"x23.0  
05003518001 1 x 5/16"x23.0  
05003519001 1 x 11/32"x23.0  
05003520001 1 x 3/8"x23.0  
05003521001 1 x 7/16"x23.0  
05003522001 1 x 1/2"x23.0



**8794 LA**  
05003526001 1 x 1/4"x150.0



**8794 A**  
05003527001 1 x 1/4"x56.0



**8784 A1**  
05003529001 1 x 1/4"x37.0



**851/1 Z PH**  
05072070001 1 x PH 1x25  
05072072001 1 x PH 2x25  
05072074001 1 x PH 3x25



**855/1 Z PZ**  
05072080001 1 x PZ 1x25  
05072082001 1 x PZ 2x25



**867/1 TORX®**  
05066485001 1 x TX 10x25  
05066486001 1 x TX 15x25  
05066487001 1 x TX 20x25  
05066488001 1 x TX 25x25  
05066489001 1 x TX 27x25  
05066490001 1 x TX 30x25



**840/1 Z Hex-Plus**  
05135074001 1 x 5/32"x25  
05135075001 1 x 3/16"x25  
05135079001 1 x 7/32"x25  
05135076001 1 x 1/4"x25

**Web link**

[http://products.wera.de/en/tools\\_for\\_the\\_aerospace\\_segment\\_ratchets\\_the\\_zyklop\\_ratchets\\_1\\_4\\_8100\\_sa\\_10.html](http://products.wera.de/en/tools_for_the_aerospace_segment_ratchets_the_zyklop_ratchets_1_4_8100_sa_10.html)

Wera - 8100 SA 10  
05004020001 - 4013288173904

Wera Werkzeuge GmbH  
Korzter Straße 21-25  
D-42349 Wuppertal  
Tel: +49 (0)2 02 / 40 45-0  
E-Mail: info@wera.de

**8100 SA 10 Zyklop Metal Ratchet Set with push-through square, 1/4" drive,  
imperial , 28 pieces**  
The Zyklop Ratchets, 1/4"



**Zyklop Metal Push**



Due to the ever-more confined working environment, space is becoming more and more an issue for the application of ratchets. Our product developers therefore intensively occupied themselves with the issue of confined working spaces, and Wera has now solved this problem. The extremely slim and robust Zyklop Metal ratchet with a long lever was what emerged. When the socket must not get lost and a coincidental change of direction has to be avoided at all cost, the Zyklop Metal Push is the correct choice.



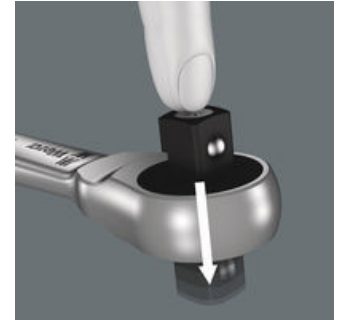
Due to the ever-more confined working environment, space is becoming more and more an issue for the application of ratchets. Our product developers therefore intensively occupied themselves with the issue of confined working spaces, and Wera has now solved this problem. The extremely slim and robust Zyklop Metal ratchet with a long lever was what emerged. When the socket must not get lost and a coincidental change of direction has to be avoided at all cost, the Zyklop Metal Push is the correct choice.

**Slim design**



Forged, full metal ratchet (chrome-molybdenum) that is extremely robust with a long service life; slim design to enable work in very confined spaces.

**Square drive**



Smooth push-through mechanism, that cannot get lost.

**Web link**

[http://products.wera.de/en/tools\\_for\\_the\\_aerospace\\_segment\\_ratchets\\_the\\_zyklop\\_ratchets\\_1\\_4\\_8100\\_sa\\_10.html](http://products.wera.de/en/tools_for_the_aerospace_segment_ratchets_the_zyklop_ratchets_1_4_8100_sa_10.html)

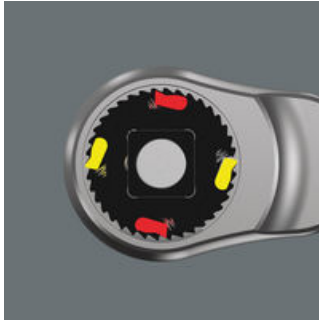
Wera - 8100 SA 10  
05004020001 - 4013288173904

Wera Werkzeuge GmbH  
Korzter Straße 21-25  
D-42349 Wuppertal  
Tel: +49 (0)2 02 / 40 45-0  
E-Mail: [info@wera.de](mailto:info@wera.de)

**8100 SA 10 Zyklop Metal Ratchet Set with push-through square, 1/4" drive, imperial , 28 pieces**  
**The Zyklop Ratchets, 1/4"**

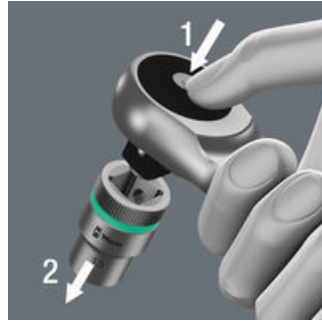


**Dual ratchet teeth**



The dual-ratchet-teeth design means that a 76 fine-toothing division can be achieved from the 38 robust teeth with a return angle of only 4.7°.

**Ball lock**



The ball lock holds the sockets and attachments securely, ensuring safe working. A changeover into any predefined position is completed by simply pressing the release button – this is even the case in the 90° position.

**Take it easy tool finder system**



Take it easy tool finder system - with profile and size colour-coding for quick and easy tool selection. Colour-coded system for hexagon drive screws (L-Keys, Zyklop bit sockets), external hex drive screws and nuts (Joker wrenches, Zyklop sockets and Zyklop bit sockets with holding function), and TORX® drive screws (L-Keys, Zyklop bit sockets).

**Textile boxes**



The textile boxes offer dramatically improved portability, and are space-saving to boot! This means you can now carry the same collection of tools, in a much more compact and comfortable package. The hassle of running back and forth for the right tools has now become a thing of the past. And the much lower weight of a set makes carrying more convenient than ever before. The textile box including the tool will even survive a fall undamaged.

**Web link**

[http://products.wera.de/en/tools\\_for\\_the\\_aerospace\\_segment\\_ratchets\\_the\\_zyklop\\_ratchets\\_1\\_4\\_8100\\_sa\\_10.html](http://products.wera.de/en/tools_for_the_aerospace_segment_ratchets_the_zyklop_ratchets_1_4_8100_sa_10.html)

Wera - 8100 SA 10  
05004020001 - 4013288173904

Wera Werkzeuge GmbH  
Korzter Straße 21-25  
D-42349 Wuppertal  
Tel: +49 (0)2 02 / 40 45-0  
E-Mail: [info@wera.de](mailto:info@wera.de)