

THIS DRAWING IS UNPUBLISHED.

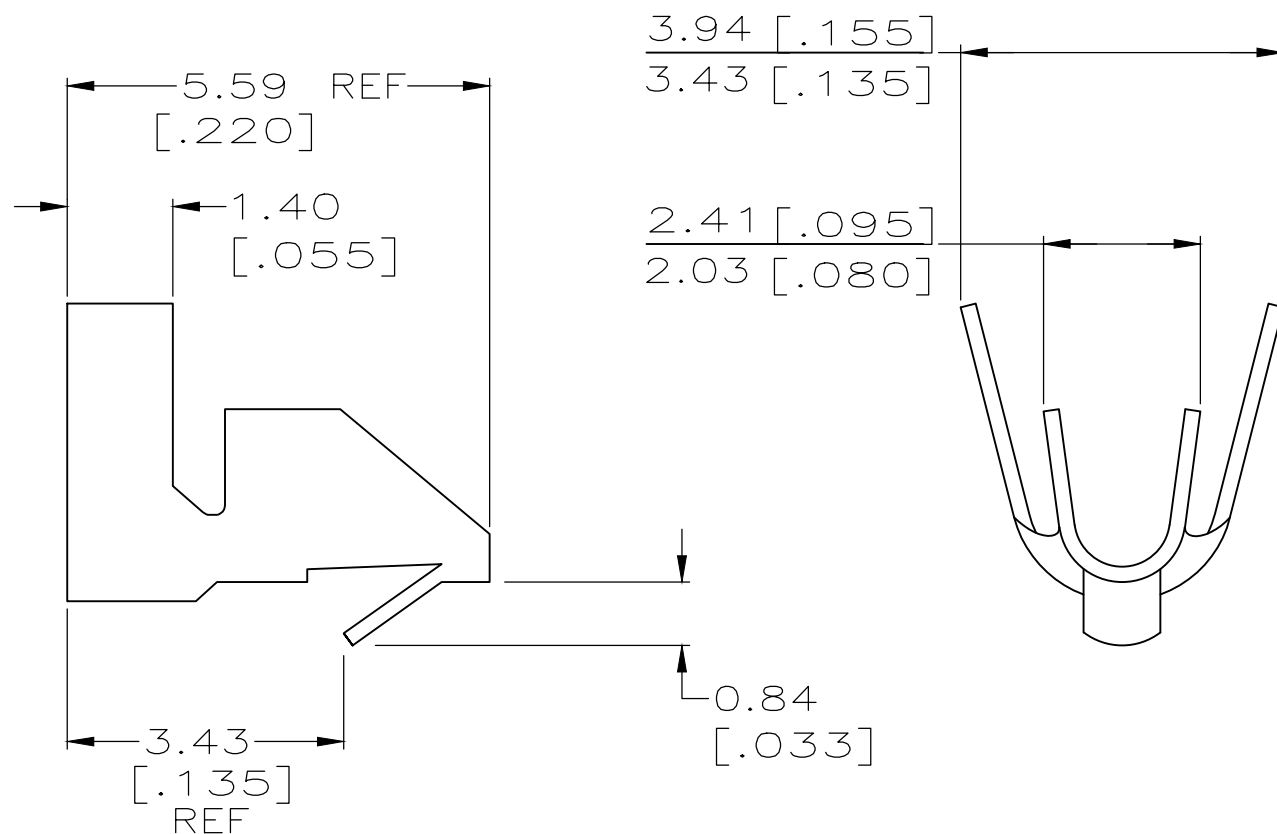
RELEASED FOR PUBLICATION

ALL RIGHTS RESERVED.

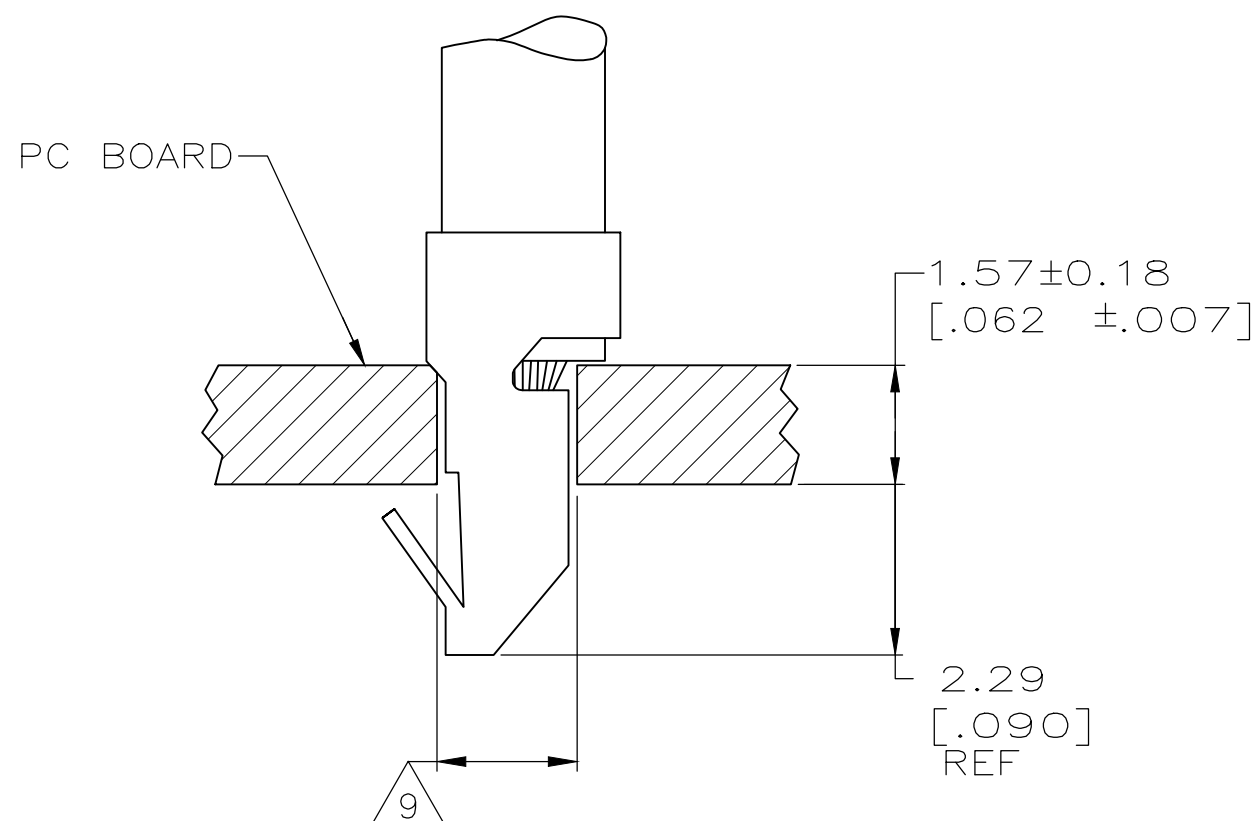
© COPYRIGHT - By -

REVISIONS

P	LTR	DESCRIPTION	DATE	DWN	APVD
	H6	REVISED PER ECO-17-013752	20DEC2017	J.Z	D.Z



- PARTS COMPLY WITH AMP SOLDERABILITY SPEC 109-11-3.
- WIRE RANGE: 0.3 - 0.9 mm² (22 - 18 AWG).
- INSULATION RANGE: 1.52 - 2.79 [.060 - .110] DIA.
- 0.00254 [.000100] MIN BRIGHT TIN-LEAD OVER 0.00203 [.000080] MIN MATTE COPPER.
- 0.00508 [.000200] MIN BRIGHT TIN-LEAD.
- DIMENSIONS IN BRACKETS ARE IN INCHES.
- FOR FOREIGN PRODUCTION ONLY.
- 4µm [.00016] MIN BRIGHT TIN PLATING.
- HOLE DIAMETER TO BE 1.83±0.08 FOR WIRE 0.3-0.6mm² (20-22 AWG) OR 1.96±0.08 FOR WIRE 0.8-0.9mm² (18 AWG).



FINISH	MATERIAL	PART NUMBER
8	0.20[.008] PHOS BRONZE	3-770565-2
8	0.20[.008] BRASS	3-770565-1
4 7	0.20[.008] BRASS	770565-3
8	0.20[.008] PHOS BRONZE	770565-2
4	0.20[.008] BRASS	770565-1

THIS DRAWING IS A CONTROLLED DOCUMENT.		DWN B. LEWIS 12-20-89	TE Connectivity NAME: MINI AMP-IN -					
DIMENSIONS: mm [INCHES]		CHK R. SWING 12-21-89				SIZE	CAGE CODE	DRAWING NO
TOLERANCES UNLESS OTHERWISE SPECIFIED:		APVD W. LONG 12-21-89				A3	00779	C-770565
0 PLC ± -		PRODUCT SPEC				RESTRICTED TO		
1 PLC ± -		APPLICATION SPEC	-					
2 PLC ± -		WEIGHT 0.000000	SCALE 10:1					
3 PLC ± 0.13[.005]		CUSTOMER DRAWING	SHEET 1 OF 1					
4 PLC ± -			REV H6					
ANGLES ± -								
MATERIAL SEE TABLE								
FINISH SEE TABLE								