

1500W Medical and Industrial Power Supplies

Features

- ◆ Low Audible Noise (<45dBA)
- ◆ EN55011/55032-B EMI
- ◆ Enclosed Construction
- ◆ Compact Size
- ◆ Medical and Industrial Certifications
- ◆ 7 Year Warranty



Key Market Segments & Applications



Specifications

Model		CUS1500M
AC Input Voltage range (1)	VAC	85 - 265VAC (47 - 63Hz)
DC Input Voltage range*	VDC	120 - 340VDC*
Inrush Current (100 / 200VAC)	A	60 / 60A
Power Factor (100 / 200VAC)	-	Meets EN61000-3-2 (0.98 / 0.95)
Input Current (115/230VAC) (Typ)	A	16 / 8A
Temperature Coefficient	%/°C	<0.02%/°C
Regulation	-	See Model Selector
Overcurrent Protection	-	>105%, Constant Current Style. After 5s unit will shutdown
Overvoltage Protection	V	125-150% (115-125% for 48V), Cycle AC line to reset
Hold Up Time (Typ at 100% load)	ms	20ms
Leakage Current (max)	mA	<0.3mA
Standby Voltage	A	5V 1A (always on)
Remote Sense	-	Yes
Remote On/Off	-	Yes. Apply external or Standby voltage to enable output voltage
DC Good, Fan Alarm	-	Open collector signal, high on fail
Parallel Operation	-	Yes, up to 5 units
Series Operation	-	Yes
Operating Temperature	°C	-20 to +60°C, derate linearly to 60% load from 50 to 60°C
Storage Temperature	°C	-30 to +75°C
Operating Humidity (non condensing)	%RH	20 - 90%RH
Storage Humidity (non condensing)	%RH	10 - 90%RH
Cooling	-	Internal variable speed fan, air intake from front. <45dBA noise
Withstand Voltage	VAC	Input to Ground 2kVAC (1xMoPP), Input to Output 4kVAC (2xMoPP), Output to Ground 1.5kVAC (1xMoPP) for 1 min.
Isolation Resistance	MΩ	>100MΩ at 25°C & 70%RH, Output to Ground 500VDC
Vibration (non operating)	-	10 - 55Hz: 19.6m/s ² (sweep 1 min) X, Y, Z for 1 hour
Shock	-	< 196.1 m/s ²
Safety Agency Certifications	-	IEC/ES/EN/CSA60601-1, IEC/UL/EN/CSA60950-1, IEC/UL/EN62368-1 (in progress), EN62477-1 (OVC III), CE Mark
Line Dips	-	SEMI-F47 (200VAC input)
Conducted & Radiated EMI	-	EN55011 / EN55032-B, FCC Class B, VCCI-B
Immunity	-	IEC61000-4-2, -3, -4, -5, -6, -8, -11, IEC61000-6-2, IEC60601-1-2 Ed.4
Weight (Typ)	g	3,000g
Size (WxHxD)	mm/In	127 x 63 x 261mm / 5 x 2.48 x 10.28"
MTBF - Telcordia SR-332 issue 3 **	Hours	769,670 hours
Warranty	yrs	Seven Years

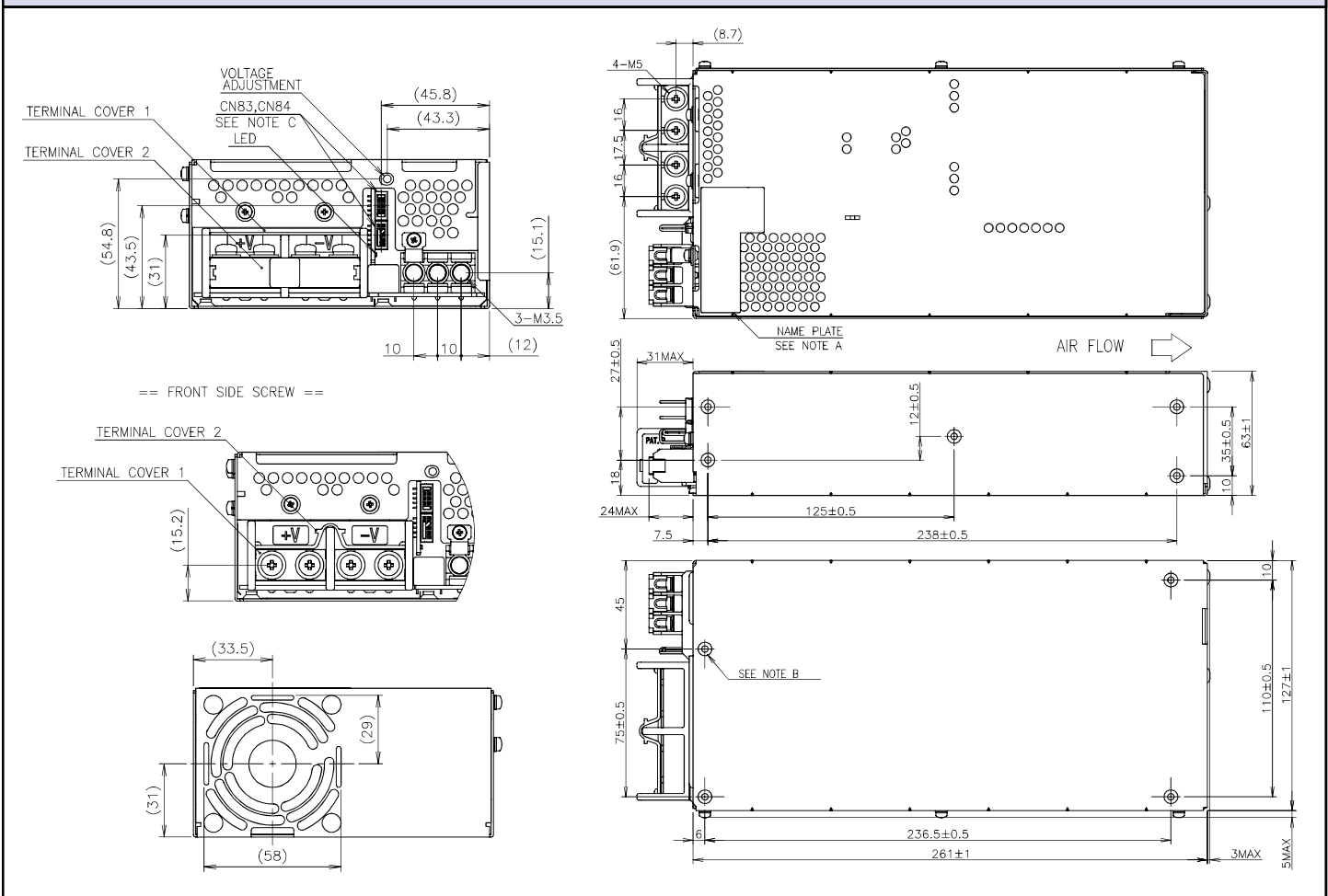
*Safety certified for AC input only **24V output model, 25°C ambient, full load, 230VAC input

(1) Derate linearly to 80% load from 90 to 85VAC input

Output Ratings

Model	Voltage (V)	Adjust Range (V)	Max Current (A)	Max Output Power (W)	Load Reg (mV)	Line Reg (mV)	Ripple Noise (mV)	Efficiency (typ) % 115/230VAC
CUS1500M-12	12	10.2 - 14.4	125	1500	96	48	150	82 / 85
CUS1500M-15	15	12.8 - 18	100	1500	120	60	150	82 / 85
CUS1500M-24	24	20.4 - 28.8	63	1512	144	96	180	85 / 88
CUS1500M-36	36	30.6 - 43.2	42	1512	216	144	250	85 / 88
CUS1500M-48	48	40.8 - 52.8	32	1536	288	192	300	85 / 88

Outline Drawing



Options

Suffix	Description
/SF	Single fuse (Line input)
/RF (Contact factory)	Reverse Fan (Air exits over input/output terminals)

For Additional Information, please visit us.tdk-lambda.com/lp/products/cus-m-series

