

STAINLESS STEEL FITTING LINE

Our stainless steel fittings and pipe nipples are made from 304 or 316 SS and are rated at 150 psi.



**A-2018 316 SS
Hose Barb: Male
Pipe Thread**



**A-2019 Cap:
Female Pipe Thread**



**A-2020 Cross:
Female Pipe
Thread**



**A-2021 Coupling:
Female Pipe Thread**



**A-2022 Elbow:
Female Pipe
Thread, 90°**



**A-2023 Elbow: Female
Pipe Thread, 45°**



**A-2024 Reducer
Bushings**

MODEL CHART	
Model	Male NPT x HB
A-2018-1	1/4" x 1/4"
A-2018-2	1/4" x 3/8"

MODEL CHART	
Model	Female NPT
A-2019-1	1/8"
A-2019-2	1/4"
A-2019-3	3/8"
A-2019-4	1/2"
A-2019-5	3/4"
A-2019-6	1"

MODEL CHART	
Model	Female NPT
A-2020-1	1/8"
A-2020-2	1/4"
A-2020-3	3/8"
A-2020-4	1/2"
A-2020-5	3/4"
A-2020-6	1"

MODEL CHART	
Model	Female NPT
A-2021-1	1/8" x 1/8"
A-2021-2	1/4" x 1/4"
A-2021-3	3/8" x 3/8"
A-2021-4	1/2" x 1/2"
A-2021-5	3/4" x 3/4"
A-2021-6	1" x 1"
A-2021-7	1-1/4" x 1-1/4"
A-2021-8	1-1/2" x 1-1/2"
A-2021-9	2" x 2"
A-2021-10	3" x 3"

MODEL CHART	
Model	Female NPT
A-2022-1	1/8" x 1/8"
A-2022-2	1/4" x 1/4"
A-2022-3	3/8" x 3/8"
A-2022-4	1/2" x 1/2"
A-2022-5	3/4" x 3/4"
A-2022-6	1" x 1"
A-2022-7	1-1/4" x 1-1/4"
A-2022-8	1-1/2" x 1-1/2"
A-2022-9	2" x 2"
A-2022-10	3" x 3"

MODEL CHART	
Model	Female NPT
A-2023-1	1/8" x 1/8"
A-2023-2	1/4" x 1/4"
A-2023-3	3/8" x 3/8"
A-2023-4	1/2" x 1/2"
A-2023-5	3/4" x 3/4"
A-2023-6	1" x 1"
A-2023-7	1-1/4" x 1-1/4"
A-2023-8	1-1/2" x 1-1/2"
A-2023-9	2" x 2"
A-2023-10	3" x 3"

MODEL CHART	
Model	Male NPT x Female NPT
A-2024-1	1/4" x 1/8"
A-2024-2	3/8" x 1/4"
A-2024-3	1/2" x 1/4"
A-2024-4	1/2" x 3/8"
A-2024-5	3/4" x 1/4"
A-2024-6	3/4" x 1/2"
A-2024-7	1" x 1/2"
A-2024-8	1" x 3/4"
A-2024-9	1-1/4" x 3/4"
A-2024-10	1-1/4" x 1"
A-2024-11	1-1/2" x 3/4"
A-2024-12	1-1/2" x 1"
A-2024-13	1-1/2" x 1-1/4"
A-2024-14	2" x 1"
A-2024-15	2" x 1-1/4"
A-2024-16	2" x 1-1/2"
A-2024-17	3" x 2"



SERIES A-2000

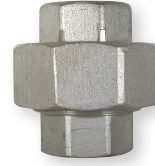
STAINLESS STEEL FITTING LINE



A-2025 Street Elbow:
Female Pipe Thread by Male
Pipe Thread



A-2026 Tee:
Female Pipe Thread



A-2027 Union:
Female Pipe Thread



A-2028 Nipple:
Male Pipe Thread

MODEL CHART	
Model	Female NPT x Male NPT
A-2025-1	1/8" x 1/8"
A-2025-2	1/4" x 1/4"
A-2025-3	3/8" x 3/8"
A-2025-4	1/2" x 1/2"
A-2025-5	3/4" x 3/4"
A-2025-6	1" x 1"
A-2025-7	1-1/4" x 1-1/4"
A-2025-8	1-1/2" x 1-1/2"
A-2025-9	2" x 2"
A-2025-10	3" x 3"

MODEL CHART	
Model	Female NPT
A-2027-1	1/8"
A-2027-2	1/4"
A-2027-3	3/8"
A-2027-4	1/2"
A-2027-5	3/4"
A-2027-6	1"
A-2027-7	1-1/4"
A-2027-8	1-1/2"
A-2027-10	3"

MODEL CHART	
Model	Female NPT
A-2026-1	1/8"
A-2026-2	1/4"
A-2026-3	3/8"
A-2026-4	1/2"
A-2026-5	3/4"
A-2026-6	1"
A-2026-7	1-1/4"
A-2026-8	1-1/2"
A-2026-9	2"
A-2026-10	3"

MODEL CHART			
Model	Male NPT x Length	Model	Male NPT x Length
A-2028-1	1/8" x 3/4"	A-2028-15	3/4" x 2"
A-2028-2	1/8" x 1-1/2"	A-2028-16	1" x 1-1/2"
A-2028-3	1/8" x 2"	A-2028-17	1" x 2"
A-2028-4	1/4" x 7/8"	A-2028-18	1-1/4" x 1-5/8"
A-2028-5	1/4" x 1-1/2"	A-2028-19	1-1/4" x 2"
A-2028-6	1/4" x 2"	A-2028-20	1-1/2" x 1-3/4"
A-2028-7	3/8" x 1"	A-2028-21	1-1/2" x 2"
A-2028-8	3/8" x 1-1/2"	A-2028-22	2" x 2"
A-2028-9	3/8" x 2"	A-2028-23	2" x 2-1/2"
A-2028-10	1/2" x 1-1/8"	A-2028-24	3" x 2-5/8"
A-2028-11	1/2" x 1-1/2"	A-2028-25	3" x 3"
A-2028-12	1/2" x 2"	A-2028-26	4" x 2-7/8"
A-2028-13	3/4" x 1-3/8"	A-2028-27	4" x 4"
A-2028-14	3/4" x 1-1/2"		

Fittings,
Stainless Steel

NYLON FITTINGS

Dwyer Instruments offers a wide variety of nylon and SS fittings. Nylon fittings are generally acceptable for use at working pressures up to 150 psi at normal room temperatures, and at very low pressures, temperatures can approach 175°F.



A-2002 Female Pipe Thread (FPT) by Hose Barb (HB)



A-2005 Elbows: Female Pipe Thread by Male Pipe Thread



A-2007 Tees: Female Pipe Thread



A-2001 Male Pipe Thread (MPT) by Hose Barb (HB)



A-2003 Elbows: Male Pipe Thread by Hose Barb



A-2006 Elbows: Female Pipe Thread-90°



A-2008 Tees: Female Pipe Thread with 1/4" Gage Port



A-2004 Elbows: Female Pipe Thread by Hose Barb



A-2009 Reducer: Bushings

MODEL CHART	
Model	Male NPT x HB
A-2001-1	1/8" x 3/16"
A-2001-2	1/8" x 1/4"
A-2001-3	1/8" x 5/16"
A-2001-4	1/8" x 3/8"
A-2001-5	1/4" x 3/16"
A-2001-6	1/4" x 1/4"

MODEL CHART	
Model	Female NPT x Male NPT
A-2005-1	1/4" x 1/4"
A-2005-2	3/8" x 3/8"
A-2005-3	1/2" x 1/2"

MODEL CHART	
Model	Male NPT x Female NPT
A-2009-1	3/8" x 1/8"
A-2009-2	3/8" x 1/4"
A-2009-3	1/2" x 1/8"
A-2009-4	1/2" x 1/4"
A-2009-5	1/2" x 3/8"
A-2009-6	3/4" x 1/8"
A-2009-7	3/4" x 1/4"
A-2009-8	3/4" x 3/8"
A-2009-9	3/4" x 1/2"
A-2009-10	1" x 1/2"
A-2009-11	1" x 3/4"
A-2009-13	1-1/4" x 1"
A-2009-14	1-1/2" x 3/4"
A-2009-15	1-1/2" x 1"
A-2009-16	1-1/2" x 1-1/4"
A-2009-17	2" x 3/4"
A-2009-18	2" x 1"
A-2009-19	2" x 1-1/4"
A-2009-20	2" x 1-1/2"

MODEL CHART	
Model	Female NPT x HB
A-2002-1	1/4" x 1/4"
A-2002-2	1/4" x 3/8"
A-2002-3	3/8" x 1/4"
A-2002-4	3/8" x 3/8"

MODEL CHART	
Model	Female NPT x Female NPT
A-2006-1	1/2" x 1/2"
A-2006-2	3/4" x 3/4"
A-2006-3	1" x 1"

MODEL CHART	
Model	Male NPT x HB
A-2003-1	1/8" x 1/4"
A-2003-2	1/8" x 3/8"
A-2003-3	1/4" x 3/16"
A-2003-4	1/4" x 1/4"

MODEL CHART	
Model	Female NPT
A-2007-1	1/4"
A-2007-2	1/2"
A-2007-3	3/4"

MODEL CHART	
Model	Female NPT x HB
A-2004-1	1/8" x 1/4"
A-2004-2	1/4" x 1/4"

MODEL CHART	
Model	Female NPT
A-2008-1	1/2"

Dwyer

SERIES A-2000

NYLON FITTINGS

**A-2010 Reducing Nipples:
Male Pipe Thread**



**A-2011 Nipples: Male Pipe
Thread by Male Pipe Thread**



**A-2012 Couplings:
Female Pipe Thread**



**A-2013 Elbows:
Hose Barb**



**A-2014 Hose Menders
without Center Stop**



**A-2015 Hose Menders
with Center Stop**



**A-2016 Tees:
Hose Barb**



**A-2017 Tees: Male Pipe
Thread by Hose Barb**

MODEL CHART

Model	Male NPT x Male NPT
A-2010-1	1/4" x 1/8"
A-2010-2	3/8" x 1/8"
A-2010-3	3/8" x 1/4"
A-2010-4	1/2" x 1/4"
A-2010-5	1/2" x 3/8"
A-2010-6	3/4" x 3/8"
A-2010-7	3/4" x 1/2"

MODEL CHART

Model	Female NPT x Female NPT
A-2012-1	1/2" x 1/2"
A-2012-2	3/4" x 3/4"
A-2012-3	1" x 1"

MODEL CHART

Model	HB x HB
A-2015-1	1/8" x 1/8"
A-2015-2	1/4" x 1/4"

MODEL CHART

Model	HB (1) x HB (2&3)
A-2016-1	1/4" x 1/4"
A-2016-2	1/4" x 3/8"

MODEL CHART

Model	Male NPT x Male NPT
A-2011-1	1/8" x 1/8"
A-2011-2	1/4" x 1/4"
A-2011-3	3/8" x 3/8"
A-2011-4	1/2" x 1/2"

MODEL CHART

Model	HB x HB
A-2013-1	1/4" x 1/4"
A-2013-2	3/8" x 1/4"

MODEL CHART

Model	HB x HB
A-2014-1	1/4" x 3/16"
A-2014-2	5/16" x 5/16"

MODEL CHART

Model	Male NPT (1) x HB (2&3)
A-2017-1	1/8" x 1/4"
A-2017-2	1/4" x 1/4"
A-2017-3	1/4" x 3/8"
A-2017-4	1/4" x 1/2"