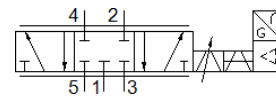
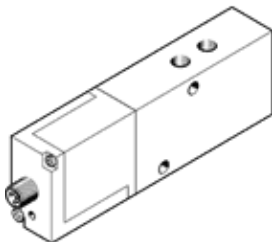


Proportional directional control valve MPYE-5-3/8-420-B

Part number: 161981

FESTO



Data sheet

Feature	Value
Nominal size	10 mm
Type of actuation	electrical
Sealing principle	Hard
Assembly position	Any
Design structure	Piston slide
Type of reset	Magnetic spring
Safety instructions	MPYE safety position: If the power supply cable is interrupted, travel occurs to the closed mid-position
Type of piloting	direct
Flow direction	non reversible
Valve function	5/3 closed
Polarity protected	for set point value
Working pressure	0 ... 10 bar
b value	0.21
C value	9 l/sbar
Standard nominal flow rate	2,000 l/min
Limit frequency	70 Hz
Max. hysteresis	0.4 %
Operating voltage range DC	17 ... 30 V
Residual ripple	5 %
SETPOINT/ACTUAL values	Current type 4 - 20 mA
Operating medium	Compressed air in accordance with ISO8573-1:2010 [6:4:4]
Note on operating and pilot medium	Lubricated operation not possible
CE symbol (see declaration of conformity)	according to EU-EMV guideline
Corrosion resistance classification CRC	2 - Moderate corrosion stress
Medium temperature	5 ... 40 °C
Protection class	IP65
Ambient temperature	0 ... 50 °C
Authorization	RCM Mark
Product weight	685 g
Electrical connection	Plug Round design M12x1 4-pin
Mounting type	with through hole
Pneumatic connection, port 1	G3/8
Pneumatic connection, port 2	G3/8
Pneumatic connection, port 3	G3/8
Pneumatic connection, port 4	G3/8
Pneumatic connection, port 5	G3/8
Materials note	Conforms to RoHS
Material cover	ABS coated
Material seals	NBR
Material housing	Aluminum Anodized