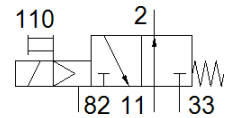
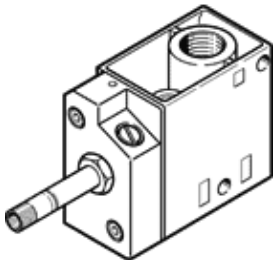


# Solenoid valve MOFH-3-1/4-EX

Part number: 535904

FESTO



## Data sheet

Feature	Value
Valve function	3/2 open, monostable
Type of actuation	electrical
Valve size	30.5 mm
Width	30.5 mm
Standard nominal flow rate	800 l/min
Working pressure	1.5 ... 8 bar
Design structure	Poppet seat
Type of reset	mechanical spring
Protection class	IP65
Authorization	c UL us - Recognized (OL)
Nominal size	7 mm
Grid dimension	32 mm
Exhaust-air function	throttleable
Sealing principle	soft
Assembly position	Any
Manual override	detenting
Type of piloting	Piloted
Flow direction	non reversible
Freedom from overlap	No
Switching time off	41 ms
Switching time on	14 ms
Max. positive test pulse with logic 0	2,200 µs
Max. negative test pulse with logic 1	3,700 µs
Characteristic coil data	See solenoid coil, to be ordered separately
ATEX category Gas	II 2G
Explosion ignition protection type Gas	c T4
ATEX category Dust	II 2D
Explosion ignition protection type Dust	c 130 °C
Explosion-proof ambient temperature	-5 °C ≤ Ta ≤ +40 °C
Operating medium	Compressed air in accordance with ISO8573-1:2010 [7:4:4]
Note on operating and pilot medium	Lubricated operation possible (subsequently required for further operation)
CE symbol (see declaration of conformity)	according to EU-Ex protection guideline (ATEX)
Corrosion resistance classification CRC	1 - Low corrosion stress
Storage temperature	-20 ... 60 °C
Medium temperature	-5 ... 40 °C
Ambient temperature	-5 ... 40 °C
Product weight	320 g
Electrical connection	Via F coil, must be ordered separately
Mounting type	Optional on manifold rail with through hole
Scavenging orifice connection	M5
Pilot exhaust port 82	M5

Feature	Value
Pneumatic connection, port 1	G1/4
Pneumatic connection, 11	G1/4
Pneumatic connection, port 2	G1/4
Pneumatic connection, port 3	G1/4
Pneumatic connection, 33	G1/4
Materials note	Conforms to RoHS
Material seals	NBR
Material housing	Aluminum die cast