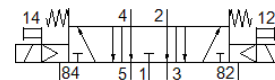
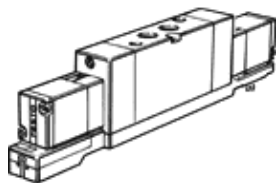


Solenoid valve

MVH-5/3E-1/4-B-VI-X

Part number: 164573

FESTO



Data sheet

Feature	Value
Valve function	5/3 exhausted
Type of actuation	electrical
Standard nominal flow rate	1,600 l/min
Working pressure	3 ... 10 bar
Design structure	Piston slide
Type of reset	mechanical spring
Nominal size	10 mm
Exhaust-air function	throttleable
Sealing principle	soft
Type of piloting	Piloted
Flow direction	non reversible
b value	0.38
C value	6.35 l/sbar
Switching time off	45 ms
Switching time on	33 ms
Characteristic coil data	24 V DC: 2.5 W
Permissible voltage fluctuation	+/- 10 %
Operating medium	Filtered compressed air, grade of filtration 40 µm, lubricated or unlubricated
Note on operating and pilot medium	Lubricated operation possible (subsequently required for further operation)
Medium temperature	-5 ... 50 °C
Ambient temperature	-5 ... 50 °C
Mounting type	with through hole
Pneumatic connection, port 1	Subbase G1/4
Pneumatic connection, port 2	G1/4
Pneumatic connection, port 3	Subbase G1/4
Pneumatic connection, port 4	G1/4
Pneumatic connection, port 5	Subbase
Materials note	Contains PWIS substances
Material seals	NBR
Material housing	Aluminum die cast