

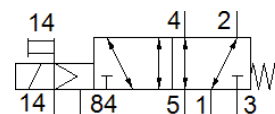
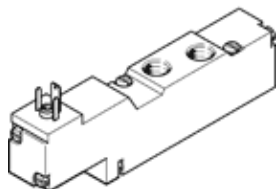
# Solenoid valve

## MEBH-5/2-1/8-P-S-B

Part number: 173009

FESTO

With solenoid coil and manual override, without socket.  
This type is suitable for vacuum.



## Data sheet

Feature	Value
Valve function	5/2 monostable
Type of actuation	electrical
Width	17.8 mm
Standard nominal flow rate	600 l/min
Working pressure	-0.9 ... 10 bar
Design structure	Piston slide
Type of reset	mechanical spring
Protection class	IP65
Authorization	c UL us - Recognized (OL)
Nominal size	5 mm
Grid dimension	18 mm
Exhaust-air function	throttleable
Sealing principle	soft
Assembly position	Any
Manual override	with accessories, detenting
Type of piloting	Piloted
Pilot air supply	external
Flow direction	reversible
Freedom from overlap	Yes
Pilot pressure	2.5 ... 8 bar
b value	0.36
C value	2.55 l/sbar
Switching time off	28 ms
Switching time on	10 ms
Duty cycle	100%
Characteristic coil data	24 V DC: 2.5 W
Operating medium	Compressed air in accordance with ISO8573-1:2010 [7:4:4]
Note on operating and pilot medium	Lubricated operation possible (subsequently required for further operation)
Vibration resistance	Transport application test at severity level 1 in accordance with FN 942017-4 and EN 60068-2-6
Shock resistance	Shock test with severity level 2 in accordance with FN 942017-5 and EN 60068-2-27
Corrosion resistance classification CRC	2 - Moderate corrosion stress
Storage temperature	-20 ... 40 °C
Medium temperature	-5 ... 50 °C
Sound pressure level	75 dB(A)
Pilot medium	Compressed air in accordance with ISO8573-1:2010 [7:4:4]
Ambient temperature	-5 ... 50 °C
Product weight	105 g
Electrical connection	Plug Cubic design to EN 175301-803

Feature	Value
	Plug pattern type C to EN 175301-803
Mounting type	on manifold rail
Pilot exhaust port 82/84	Subbase
Pilot air port 12	M3
Pneumatic connection, port 1	Subbase
Pneumatic connection, port 2	G1/8
Pneumatic connection, port 3	Subbase
Pneumatic connection, port 4	G1/8
Pneumatic connection, port 5	Subbase
Materials note	Conforms to RoHS
Material seals	HNBR NBR
Material housing	Aluminum die cast