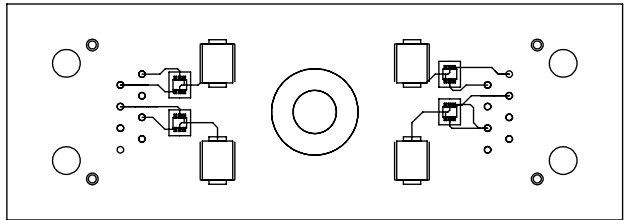
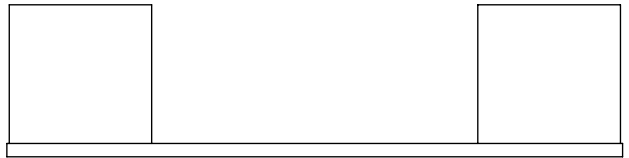
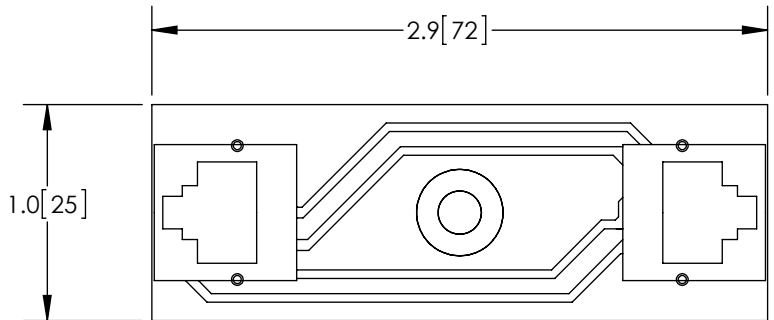




THE INFORMATION CONTAINED IN THIS DRAWING IS THE SOLE
PROPERTY OF L-COM, INC., ANY REPRODUCTION IN PART OR WHOLE
WITHOUT THE WRITTEN PERMISSION OF L-COM, INC. IS PROHIBITED.

REVISIONS			
REV	DESCRIPTION	DATE	APPROVED
A	INITIAL RELEASE	8/22/13	D.GRIFFIN



NOTES:
1- ALL PARTS SHALL BE PACKAGED AS PER L-COM SPEC PKG-00012
- ALL DIMENSIONS FOR REFERENCE ONLY -

REGULATORY COMPLIANCE:
RoHS, CE

UNLESS OTHERWISE SPECIFIED, DIMENSIONS ARE IN INCHES [mm] DIMENSIONAL TOLERANCES: .X = ±.1 [2.54] .XX = ±.01 [.25] .XXX = ±.005 [.13] ANGULAR TOLERANCES: ALL = ± 1°	APPROVALS		DATE		 <div>45 BEECHWOOD DRIVE NORTH ANDOVER, MA 01845</div>	
	DRAWN BY B.PUCHASKI		08/21/13			
	CHECKED BY P.PESA		08/21/13		CATEGORY LIGHTNING PROTECTORS	
	APPROVED BY P.PESA		08/21/13			
	CONFIGURATION DETAILS OF UNDIMENSIONED FEATURES MAY VARY		PRODUCT DESCRIPTION LP REPLACEMENT PCB ASSEMBLY HYP296			
PROJECTION 	COLOR VARIATIONS MAY OCCUR		SIZE A	FSCM NO. 43321	DWG. NO. ALPR-HYP296	REV. A
			SCALE: NONE	CAD FILE: ALPR-HYP296.SLDDRW		SHEET 1 OF 1