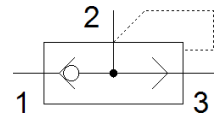
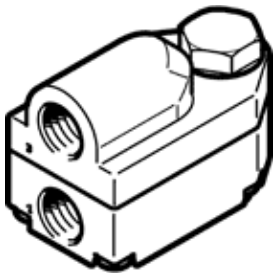


# Rapid exhaust valve VBQF-D-G18-E

Part number: 547533

FESTO



## Data sheet

Feature	Value
Valve function	Quick exhaust
Pneumatic connection, port 1	G1/8
Pneumatic connection, port 2	G1/8
Mounting type	Threaded
Standard nominal flow rate, exhaust	850 l/min
Standard flow rate for exhaust 6→0 bar	1,300 l/min
Standard nominal flow rate for pressurization 6→5 bar	350 l/min
Working pressure	0.5 ... 10 bar
Ambient temperature	-20 ... 80 °C
Material housing	Aluminum die cast Zinc die-casting
Operating medium	Compressed air in accordance with ISO8573-1:2010 [7:4:4]
Nominal size	5 mm
Assembly position	Any
Note on operating and pilot medium	Lubricated operation possible (subsequently required for further operation)
Corrosion resistance classification CRC	1 - Low corrosion stress
Medium temperature	-20 ... 80 °C
Product weight	102.5 g
Pneumatic connection, port 3	G1/8
Materials note	Conforms to RoHS
Material seals	NBR