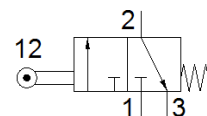


End stop limit switch SVK-3-PK-3

Part number: 12146

FESTO



Data sheet

Feature	Value
Valve function	3/2 closed, monostable
Type of actuation	mechanical
Standard nominal flow rate	50 l/min
Working pressure	-0.9 ... 8 bar
Design structure	Spherical seat
Type of reset	mechanical spring
Nominal size	1.5 mm
Sealing principle	soft
Assembly position	Any
Type of piloting	direct
Flow direction	non reversible
Operating medium	Compressed air in accordance with ISO8573-1:2010 [7:4:4]
Note on operating and pilot medium	Lubricated operation possible (subsequently required for further operation)
Medium temperature	-10 ... 80 °C
Ambient temperature	-10 ... 80 °C
Mounting type	with through hole
Pneumatic connection, port 1	PK-3
Pneumatic connection, port 2	PK-3
Pneumatic connection, port 3	Non-ducted
Materials note	Contains PWIS substances