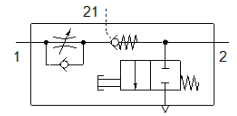
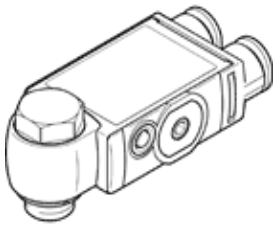


One-way flow control valve VFOF-LE-BAH-G18-Q6

Part number: 8001459

FESTO



Data sheet

Feature	Value
Valve function	One-way flow control function for exhaust air
Pneumatic connection, port 1	QS-6
Pneumatic connection, port 2	G1/8
Type of actuation	manual
Pilot air port 21	QS-6
Adjusting element	Internal hex
Mounting type	Threaded
Standard nominal flow rate in flow control direction	240 l/min
Standard nominal flow rate in non-return direction	120 ... 220 l/min
Working pressure	0.2 ... 10 bar
Pilot pressure	2 ... 10 bar
Ambient temperature	-10 ... 60 °C
Material housing	PBT
Assembly position	Any
Type of actuation, controlled non-return function	pneumatic
Manual exhaust function	Pushing
Ability to swivel	360° / no continuous swivelling permissible
Operating pressure complete temperature range	0.2 ... 10 bar
Standard flow rate in direction of flow control: 6 → 0 bar	420 l/min
Standard flow rate in non-return direction: 6 → 0 bar, actuated	400 ... 460 l/min
Standard flow rate in non-return direction: 6 → 0 bar, unactuated	400 ... 460 l/min
Standard nominal flow rate in non-return direction, actuated	150 ... 230 l/min
Standard nominal flow rate in non-return direction, unactuated	120 ... 220 l/min
Switching time off	9 ms
Switching time on	6 ms
Operating medium	Compressed air in accordance with ISO8573-1:2010 [7:4:4]
Note on operating and pilot medium	Lubricated operation possible (subsequently required for further operation)
Medium temperature	-10 ... 60 °C
Pilot medium	Compressed air in accordance with ISO8573-1:2010 [7:4:4]
Nominal tightening torque	3 Nm
Tolerance for nominal tightening torque	± 20 %
Permissible actuation moment, regulating screw	1 Nm
Product weight	28.6 g
Material of cover	ES-BE
Materials note	Conforms to RoHS
Material cover	PBT
Material seals	NBR
Material hollow bolt	Wrought Aluminum alloy
Material sleeve	Wrought Aluminum alloy
Material release ring	POM
Material adjusting screw	Brass