

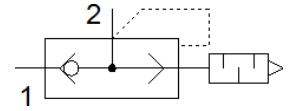
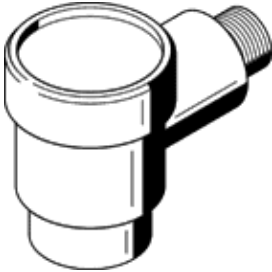
Rapid exhaust valve SEU-1/4-NPT

Part number: 9799

FESTO

With built-in silencer.

The exhaust noise level is measured at 87 psi/6 bar to atmosphere at 3.28ft/1 m distance.



Data sheet

Feature	Value
Valve function	Quick exhaust
Pneumatic connection, port 1	NPT1/4-18
Pneumatic connection, port 2	NPT1/4-18
Mounting type	Threaded
Standard nominal flow rate, exhaust	1,100 l/min
Standard flow rate for exhaust 6->0 bar	2,300 l/min
Standard nominal flow rate for pressurization 6->5 bar	960 l/min
Working pressure	0.5 ... 10 bar
Ambient temperature	-20 ... 75 °C
Operating medium	Compressed air in accordance with ISO8573-1:2010 [7::-]
Nominal size	7 mm
Note on operating and pilot medium	Lubricated operation possible (subsequently required for further operation)
Medium temperature	-20 ... 75 °C
Sound pressure level	85 dB(A)
Materials note	Conforms to RoHS