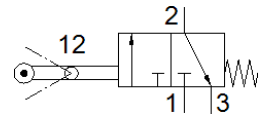
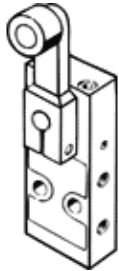


Swivel lever valve RW-3-M5

Part number: 4031

FESTO



Data sheet

Feature	Value
Valve function	3/2 closed, monostable
Type of actuation	mechanical
Standard nominal flow rate	80 l/min
Working pressure	-0.95 ... 8 bar
Design structure	Piston seat
Nominal size	2 mm
Type of piloting	direct
Operating medium	Compressed air in accordance with ISO8573-1:2010 [-:-:-]
Note on operating and pilot medium	Lubricated operation possible (subsequently required for further operation)
Ambient temperature	-10 ... 60 °C
Actuating force	14.5 N
Mounting type	with through hole
Pneumatic connection, port 1	M5
Pneumatic connection, port 2	M5
Material seals	NBR
Material housing	Zinc die-casting