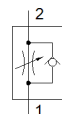
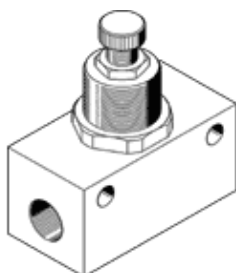


# One-way flow control valve GRA-1/4-B

Part number: 6509

FESTO



## Data sheet

| Feature  | Value   |
|--|---|
| Valve function                                       | One-way flow control function   |
| Pneumatic connection, port 1                         | G1/4  |
| Pneumatic connection, port 2                         | G1/4  |
| Adjusting element                                    | Knurled screw   |
| Mounting type  | Optional<br>Front panel installation<br>with through hole                   |
| Standard nominal flow rate in flow control direction | 420 l/min   |
| Standard nominal flow rate in non-return direction   | 780 l/min   |
| Working pressure                                     | 0.1 ... 10 bar  |
| Ambient temperature                                  | -20 ... 75 °C   |
| Material housing                                     | Zinc die-casting  |
| Assembly position                                    | Any   |
| Operating medium                                     | Compressed air in accordance with ISO8573-1:2010 [7:4:4]                    |
| Note on operating and pilot medium                   | Lubricated operation possible (subsequently required for further operation) |
| Medium temperature                                   | -20 ... 75 °C   |
| Product weight                                       | 180 g   |
| Materials note                                       | Conforms to RoHS  |
| Material adjusting screw                             | Brass   |