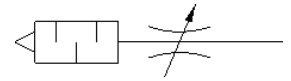


Exhaust flow control valve GRE-1/4-NPT

Part number: 10058

FESTO



Data sheet

Feature	Value
Valve function	Flow control – silencer function
Pneumatic connection, port 1	NPT1/4-18
Adjusting element	Slotted head screw
Mounting type	Threaded
Standard flow rate 6 -> 0 bar	0 ... 996 l/min
Working pressure	0 ... 10 bar
Ambient temperature	-10 ... 70 °C
Operating medium	Compressed air in accordance with ISO8573-1:2010 [7:-:-]
Note on operating and pilot medium	Lubricated operation possible (subsequently required for further operation)
Medium temperature	-10 ... 70 °C