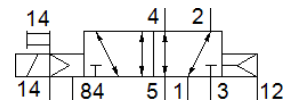
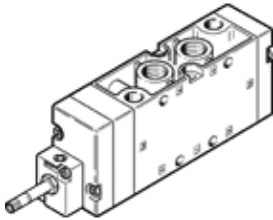


Solenoid valve

MFH-5-3/8-L-S-B-EX

Part number: 535929

FESTO



Data sheet

Feature	Value
Valve function	5/2 monostable
Type of actuation	electrical
Width	40 mm
Standard nominal flow rate	2,000 l/min
Working pressure	-0.9 ... 10 bar
Design structure	Piston slide
Type of reset	Air spring
Protection class	IP65
Nominal size	12 mm
Grid dimension	41 mm
Exhaust-air function	throttleable
Sealing principle	soft
Assembly position	Any
Manual override	Pushing
Type of piloting	Piloted
Pilot air supply	external
Flow direction	reversible
Freedom from overlap	Yes
Pilot pressure	2 ... 10 bar
Max. switching frequency	3 Hz
Switching time off	65 ms
Switching time on	27 ms
Max. positive test pulse with logic 0	2,200 µs
Max. negative test pulse with logic 1	3,700 µs
ATEX category Gas	II 2G
Explosion ignition protection type Gas	c T4
ATEX category Dust	II 2D
Explosion ignition protection type Dust	c T130°C
Explosion-proof ambient temperature	-5 °C ≤ Ta ≤ +40 °C
Operating medium	Compressed air in accordance with ISO8573-1:2010 [7:4:4]
Note on operating and pilot medium	Lubricated operation possible (subsequently required for further operation)
CE symbol (see declaration of conformity)	according to EU-Ex protection guideline (ATEX)
Corrosion resistance classification CRC	1 - Low corrosion stress
Storage temperature	-40 ... 60 °C
Medium temperature	-5 ... 40 °C
Pilot medium	Compressed air in accordance with ISO8573-1:2010 [7:4:4]
Ambient temperature	-5 ... 40 °C
Product weight	630 g
Electrical connection	Via F coil, must be ordered separately
Mounting type	with through hole
Pilot exhaust port 84	M5
Pilot air port 12	G1/8
Pilot air port 14	G1/8

Feature	Value
Pneumatic connection, port 1	G3/8
Pneumatic connection, port 2	G3/8
Pneumatic connection, port 3	G3/8
Pneumatic connection, port 4	G3/8
Pneumatic connection, port 5	G3/8
Materials note	Conforms to RoHS
Material seals	NBR
Material housing	Aluminum die cast