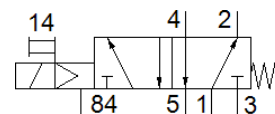
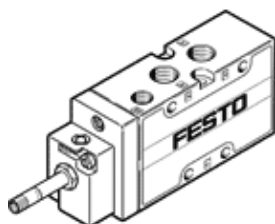


Solenoid valve MFH-5-1/4-B-EX

Part number: 535919

FESTO



Data sheet

Feature	Value
Valve function	5/2 monostable
Type of actuation	electrical
Width	32 mm
Standard nominal flow rate	1,300 l/min
Working pressure	2 ... 10 bar
Design structure	Poppet seat
Type of reset	mechanical spring
Protection class	IP65
Nominal size	7 mm
Grid dimension	33 mm
Exhaust-air function	throttleable
Sealing principle	soft
Assembly position	Any
Manual override	Pushing
Type of piloting	Piloted
Pilot air supply	Internal
Flow direction	non reversible
Freedom from overlap	No
b value	0.29
C value	5.5 l/sbar
Max. switching frequency	3 Hz
Switching time off	36 ms
Switching time on	12 ms
Max. positive test pulse with logic 0	2,200 µs
Max. negative test pulse with logic 1	3,700 µs
ATEX category Gas	II 2G
Explosion ignition protection type Gas	c T4
ATEX category Dust	II 2D
Explosion ignition protection type Dust	c T130°C
Explosion-proof ambient temperature	-5°C ≤ Ta ≤ +40°C
Operating medium	Compressed air in accordance with ISO8573-1:2010 [7:4:4]
Note on operating and pilot medium	Lubricated operation possible (subsequently required for further operation)
CE symbol (see declaration of conformity)	according to EU-Ex protection guideline (ATEX)
Corrosion resistance classification CRC	1 - Low corrosion stress
Storage temperature	-40 ... 60 °C
Medium temperature	-10 ... 60 °C
Ambient temperature	-5 ... 40 °C
Product weight	360 g
Electrical connection	Via F coil, must be ordered separately
Mounting type	with through hole
Pilot exhaust port 84	M5
Pneumatic connection, port 1	G1/4
Pneumatic connection, port 2	G1/4

Feature	Value
Pneumatic connection, port 3	G1/4
Pneumatic connection, port 4	G1/4
Pneumatic connection, port 5	G1/4
Materials note	Conforms to RoHS
Material seals	NBR TPE-U(PU)
Material housing	Aluminum die cast