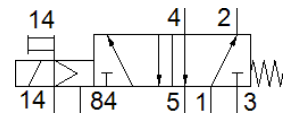
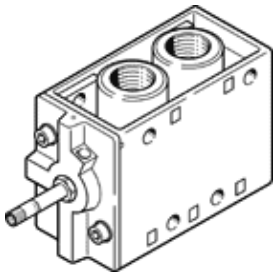


# Solenoid valve MFH-5-1/2-S-EX

Part number: 535911

FESTO



## Data sheet

Feature	Value
Valve function	5/2 monostable
Type of actuation	electrical
Width	52 mm
Standard nominal flow rate	3,700 l/min
Working pressure	0 ... 10 bar
Design structure	Poppet seat
Type of reset	mechanical spring
Protection class	IP65
Nominal size	14 mm
Grid dimension	69 mm
Exhaust-air function	throttleable
Sealing principle	soft
Assembly position	Any
Manual override	detenting
Type of piloting	Piloted
Pilot air supply	external
Flow direction	non reversible
Freedom from overlap	No
Pilot pressure	1 ... 8 bar
b value	0.32
Switching time off	150 ms
Switching time on	21 ms
Max. positive test pulse with logic 0	2,200 µs
Max. negative test pulse with logic 1	3,700 µs
Characteristic coil data	See solenoid coil, to be ordered separately
ATEX category Gas	II 2G
Explosion ignition protection type Gas	c T4
ATEX category Dust	II 2D
Explosion ignition protection type Dust	c 130 °C
Explosion-proof ambient temperature	-5 °C ≤ Ta ≤ +40 °C
Operating medium	Compressed air in accordance with ISO8573-1:2010 [7:4:4]
Note on operating and pilot medium	Lubricated operation possible (subsequently required for further operation)
CE symbol (see declaration of conformity)	according to EU-Ex protection guideline (ATEX)
Corrosion resistance classification CRC	1 - Low corrosion stress
Storage temperature	-20 ... 60 °C
Medium temperature	-5 ... 40 °C
Pilot medium	Compressed air in accordance with ISO8573-1:2010 [7:4:4]
Ambient temperature	-5 ... 40 °C
Product weight	1,135 g
Electrical connection	Via F coil, must be ordered separately
Mounting type	Optional on manifold rail with through hole

Feature	Value
Scavenging orifice connection	M5
Pilot exhaust port 84	M5
Pilot air port 14	G1/8
Pneumatic connection, port 1	G1/2
Pneumatic connection, port 2	G1/2
Pneumatic connection, port 3	G1/2
Pneumatic connection, port 4	G1/2
Pneumatic connection, port 5	G1/2
Materials note	Conforms to RoHS
Material seals	NBR TPE-U(PU)
Material housing	Aluminum die cast