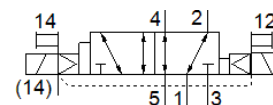
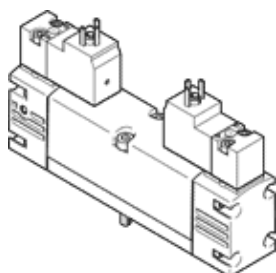


Solenoid valve

VSVA-B-D52-ZH-A1-2AC1

Part number: 547196

FESTO



Data sheet

| Feature | Value |
|---|--|
| Valve function | 5/2 bistable-dominant |
| Type of actuation | electrical |
| Valve size | 26 mm |
| Standard nominal flow rate | 1,100 l/min |
| Working pressure | -0.9 ... 16 bar |
| Design structure | Piston slide |
| Protection class | IP65 NEMA 4 |
| Nominal size | 9 mm |
| Exhaust-air function | throttleable |
| Sealing principle | soft |
| Assembly position | Any |
| Conforms to standard | ISO 15407-1 VDMA 24563 |
| Manual override | Pushing |
| Type of piloting | Piloted |
| Pilot air supply | external |
| Flow direction | reversible |
| Freedom from overlap | Yes |
| Signal status display | LED |
| Pilot pressure | 3 ... 10 bar |
| Flow rate of valve | 1,400 l/min |
| Flow rate of valve on individual subbase | 1,100 l/min |
| Flow rate of pneumatically linked valve | 1,100 l/min |
| Switching time reversal | 18 ms |
| Duty cycle | 100% |
| Characteristic coil data | 110 V AC: 50/60 Hz, pick-up power 2.9 VA, holding power 2.1 VA |
| Permissible voltage fluctuation | -15 % / +10 % |
| Operating medium | Compressed air in accordance with ISO8573-1:2010 [7:4:4] |
| Note on operating and pilot medium | Lubricated operation possible (subsequently required for further operation) |
| CE symbol (see declaration of conformity) | according to EU low voltage guideline |
| Vibration resistance | Transport application test at severity level 2 in accordance with FN 942017-4 and EN 60068-2-6 |
| Shock resistance | Shock test with severity level 2 in accordance with FN 942017-5 and EN 60068-2-27 |
| Corrosion resistance classification CRC | 0 - No corrosion stress |
| Medium temperature | -5 ... 50 °C |
| Relative air humidity | 0 - 90 % |
| Sound pressure level | 85 dB(A) |
| Pilot medium | Compressed air in accordance with ISO8573-1:2010 [7:4:4] |
| Ambient temperature | -5 ... 50 °C |
| Max. tightening torque, valve mounting | 2 Nm |
| Product weight | 305 g |

| Feature | Value |
|------------------------------|---|
| Electrical connection | Per DIN EN 175301-803 Plug pattern type C to EN 175301-803 With mains earth |
| Mounting type | On subbase |
| Auxiliary pilot air port 12 | Connection plate size 26 mm, according to ISO 15407-1 |
| Auxiliary pilot air port 14 | Connection plate size 26 mm, according to ISO 15407-1 |
| Pilot exhaust port 82/84 | Optional Ducted Non-ducted |
| Pneumatic connection, port 1 | Connection plate size 26 mm, according to ISO 15407-1 |
| Pneumatic connection, port 2 | Connection plate size 26 mm, according to ISO 15407-1 |
| Pneumatic connection, port 3 | Connection plate size 26 mm, according to ISO 15407-1 |
| Pneumatic connection, port 4 | Connection plate size 26 mm, according to ISO 15407-1 |
| Pneumatic connection, port 5 | Connection plate size 26 mm, according to ISO 15407-1 |
| Pilot interface | According to ISO 15218 |
| Materials note | Conforms to RoHS |
| Material seals | NBR |
| Material housing | Aluminum die cast |
| Material screws | Steel Galvanized |