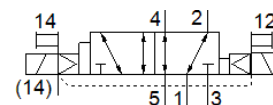
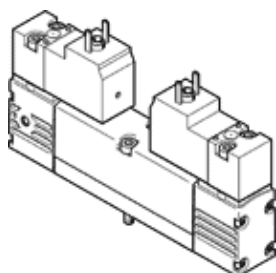


# Solenoid valve

## VSVA-B-D52-ZH-A2-5C1

Part number: 547157

**FESTO**



## Data sheet

| Feature                                  | Value  |
|--|--|
| Valve function                           | 5/2 bistable-dominant  |
| Type of actuation                        | electrical   |
| Valve size                               | 18 mm  |
| Standard nominal flow rate               | 550 l/min  |
| Working pressure                         | -0.9 ... 10 bar  |
| Design structure                         | Piston slide   |
| Protection class                         | IP65<br>NEMA 4   |
| Nominal size                             | 5 mm   |
| Exhaust-air function                     | throttleable   |
| Sealing principle                        | soft   |
| Assembly position                        | Any  |
| Conforms to standard                     | ISO 15407-1<br>VDMA 24563  |
| Manual override                          | Pushing  |
| Type of piloting                         | Piloted  |
| Pilot air supply                         | external   |
| Flow direction                           | reversible   |
| Freedom from overlap                     | Yes  |
| Signal status display                    | LED  |
| Pilot pressure                           | 3 ... 10 bar   |
| Flow rate of valve                       | 750 l/min  |
| Flow rate of valve on individual subbase | 550 l/min  |
| Flow rate of pneumatically linked valve  | 550 l/min  |
| Switching time reversal                  | 15 ms  |
| Duty cycle                               | 100%   |
| Characteristic coil data                 | 12 V DC: 1.8 W   |
| Permissible voltage fluctuation          | -15 % / +10 %  |
| Operating medium                         | Compressed air in accordance with ISO8573-1:2010 [7:4:4]                                       |
| Note on operating and pilot medium       | Lubricated operation possible (subsequently required for further operation)                    |
| Vibration resistance                     | Transport application test at severity level 2 in accordance with FN 942017-4 and EN 60068-2-6 |
| Shock resistance                         | Shock test with severity level 2 in accordance with FN 942017-5 and EN 60068-2-27              |
| Corrosion resistance classification CRC  | 0 - No corrosion stress  |
| Medium temperature                       | -5 ... 50 °C   |
| Relative air humidity                    | 0 - 90 %   |
| Sound pressure level                     | 85 dB(A)   |
| Pilot medium                             | Compressed air in accordance with ISO8573-1:2010 [7:4:4]                                       |
| Ambient temperature                      | -5 ... 50 °C   |
| Max. tightening torque, valve mounting   | 1 Nm   |
| Product weight                           | 174 g  |
| Electrical connection                    | Per DIN EN 175301-803  |

| Feature                      | Value   |
|------------------------------|---|
|                              | Plug pattern type C to EN 175301-803<br>Without mains earth |
| Mounting type                | On subbase  |
| Auxiliary pilot air port 12  | Connection plate size 18 mm, according to ISO 15407-1       |
| Auxiliary pilot air port 14  | Connection plate size 18 mm, according to ISO 15407-1       |
| Pilot exhaust port 82/84     | Not ducted as per standard<br>Ducted                        |
| Pneumatic connection, port 1 | Connection plate size 18 mm, according to ISO 15407-1       |
| Pneumatic connection, port 2 | Connection plate size 18 mm, according to ISO 15407-1       |
| Pneumatic connection, port 3 | Connection plate size 18 mm, according to ISO 15407-1       |
| Pneumatic connection, port 4 | Connection plate size 18 mm, according to ISO 15407-1       |
| Pneumatic connection, port 5 | Connection plate size 18 mm, according to ISO 15407-1       |
| Pilot interface              | According to ISO 15218                                      |
| Materials note               | Conforms to RoHS  |
| Material seals               | HNBR<br>NBR   |
| Material housing             | Aluminum die cast   |
| Material screws              | Steel<br>Galvanized   |