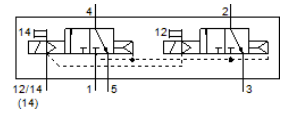
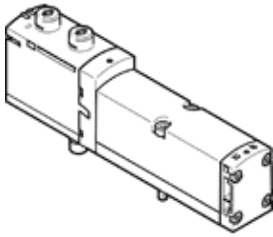


Solenoid valve

VSVA-B-T32C-AZD-A1-1T1L

Part number: 539150

FESTO



Data sheet

Feature	Value
Valve function	2x3/2 closed, monostable
Type of actuation	electrical
Width	26 mm
Standard nominal flow rate	900 l/min
Working pressure	3 ... 10 bar
Design structure	Piston slide
Protection class	IP65 NEMA 4
Authorization	CSA (OL) c UL us - Recognized (OL)
Exhaust-air function	throttleable - via flow control plate - via individual subbase
Sealing principle	soft
Assembly position	Any
Manual override	detenting Pushing Covered
Type of piloting	Piloted
Pilot air supply	external Internal
Flow direction	non reversible
Freedom from overlap	Yes
Signal status display	LED
Pilot pressure	3 ... 10 bar
Flow rate of valve	1,250 l/min
Flow rate of valve on individual subbase	1,100 l/min
Optimized flow rate of valve pneumatically concatenated flow	1,150 l/min
Flow rate of pneumatically linked valve	900 l/min
Switching time off	38 ms
Switching time on	20 ms
Duty cycle	100%
Max. positive test pulse with logic 0	1,500 µs
Max. negative test pulse with logic 1	1,200 µs
Nominal operating voltage DC	24 V
Characteristic coil data	24 V DC: 1.3 W
Surge strength	2.5 kV
Degree of contamination	3
Permissible voltage fluctuation	+/- 10 %
Operating medium	Compressed air in accordance with ISO8573-1:2010 [7:4:4]
Note on operating and pilot medium	Lubricated operation possible (subsequently required for further operation)
Vibration resistance	Transport application test at severity level 2 in accordance with FN 942017-4 and EN 60068-2-6

Feature	Value
Shock resistance	Shock test with severity level 2 in accordance with FN 942017-5 and EN 60068-2-27
Corrosion resistance classification CRC	0 - No corrosion stress
Relative air humidity	0 - 90 %
Pilot medium	Compressed air in accordance with ISO8573-1:2010 [7:4:4]
Ambient temperature	-5 ... 50 °C
Product weight	335 g
Electrical connection	Plug-in according to ISO 15407-2
Mounting type	On subbase
Auxiliary pilot air port 12/14	Manifold block, size 26 mm acc. to ISO 15407-2
Pilot exhaust port 82/84	Optional Not ducted as per standard Ducted
Pneumatic connection, port 1	Manifold block, size 26 mm acc. to ISO 15407-2
Pneumatic connection, port 2	Manifold block, size 26 mm acc. to ISO 15407-2
Pneumatic connection, port 3	Manifold block, size 26 mm acc. to ISO 15407-2
Pneumatic connection, port 4	Manifold block, size 26 mm acc. to ISO 15407-2
Pneumatic connection, port 5	Manifold block, size 26 mm acc. to ISO 15407-2
Materials note	Conforms to RoHS
Material seals	FPM HNBR NBR
Material housing	Aluminum die cast PA
Material screws	Galvanized steel