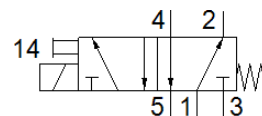
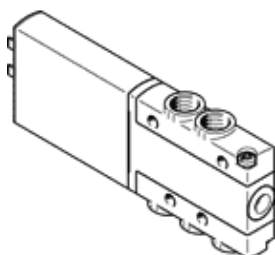


Solenoid valve

MHE2-MS1H-5/2-M7

Part number: 525113

FESTO



Data sheet

Feature	Value
Valve function	5/2 monostable
Type of actuation	electrical
Width	10 mm
Standard nominal flow rate	90 l/min
Working pressure	-0.9 ... 8 bar
Design structure	Pressure-relieved poppet valve
Type of reset	mechanical spring
Protection class	IP65
Authorization	RCM Mark c UL us - Recognized (OL)
Nominal size	2 mm
Grid dimension	14 mm
Exhaust-air function	throttleable
Sealing principle	soft
Assembly position	Any
Manual override	Pushing
Type of piloting	direct
Flow direction	non reversible
Polarity protected	Bipolar
Additional functions	Spark arresting Reduction of holding current Protective circuit
Maximum switching frequency	300 Hz
Switching time off	1.7 ms
Switching time on	1.9 ms
Tolerance for Switching time ON	+10%/-30%
Tolerance for Switching time OFF	+10%/-30%
Measuring of the switching time at 1 Hz and above	0.2 ms
Duty cycle	100%
Characteristic coil data	24 V DC: low-current phase 1.625 W, high-current phase 6.5 W
Permissible voltage fluctuation	+/- 10 %
Operating medium	Compressed air in accordance with ISO8573-1:2010 [7:4:4]
Note on operating and pilot medium	Lubricated operation possible (subsequently required for further operation)
CE symbol (see declaration of conformity)	according to EU-EMV guideline
Vibration resistance	Transport application test at severity level 2 in accordance with FN 942017-4 and EN 60068-2-6
Shock resistance	Shock test with severity level 2 in accordance with FN 942017-5 and EN 60068-2-27
Restriction ambient and medium temperature	related to switching frequency
Corrosion resistance classification CRC	2 - Moderate corrosion stress
Medium temperature	-5 ... 60 °C
Ambient temperature	-5 ... 60 °C
Max. tightening torque for fitting	2 Nm

Feature	Value
Product weight	70 g
Electrical connection	Plug 2-pin
Mounting type	with through hole
Pneumatic connection, port 1	M7
Pneumatic connection, port 2	M7
Pneumatic connection, port 3	M7
Pneumatic connection, port 4	M7
Pneumatic connection, port 5	M7
Materials note	Free of copper and PTFE Conforms to RoHS
Material seals	HNBR NBR
Material housing	Zinc die-casting coated
Material screws	Steel Galvanized