

EAO – Your Expert Partner for Human Machine Interfaces

61-6461.4067 - Emergency-stop switch compact, foolproof EN IEC 60947-5-5

61-6461.4067 - Emergency-stop switch compact, foolproof EN IEC 60947-5-5



Attention: The preview is based on a sample product. This can differ from your current configuration.

Mounting

Mounting cut-out
Design Ø 16 mm raised

Front

Front shape round
Front dimension Ø 40 mm

Other Attributes

Marking Arrows
Weight 0.018 kg

Operating-/Indication part

Lens material Plastic
Lens colour red
Lens profile Mushroom

IP-Rating

Front protection IP67, IP69K

Connection Method

Terminal Solder 2.8 x 0.5 mm

Actuator

Switching action Maintain

Switching element

Contacts 3 NC

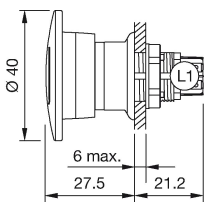
Function

Emergency stop switch

EAO – Your Expert Partner for Human Machine Interfaces

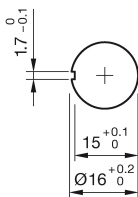
61-6461.4067 - Emergency-stop switch compact, foolproof EN IEC 60947-5-5

Dimensions

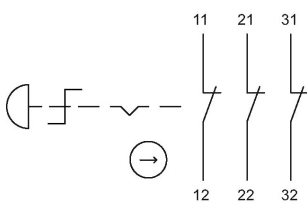


L1 = Solder/Plug-in terminal 2.8 x 0.5 mm

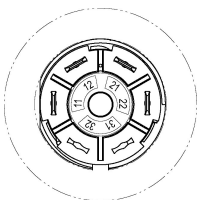
Mounting cut-outs



Wiring diagram



Component layout



Additional information

Twist to unlock clockwise

Position indication ring green

Application as per DIN EN ISO 13850 and EN 60204-1

Legend

Switching action: C = Maintained