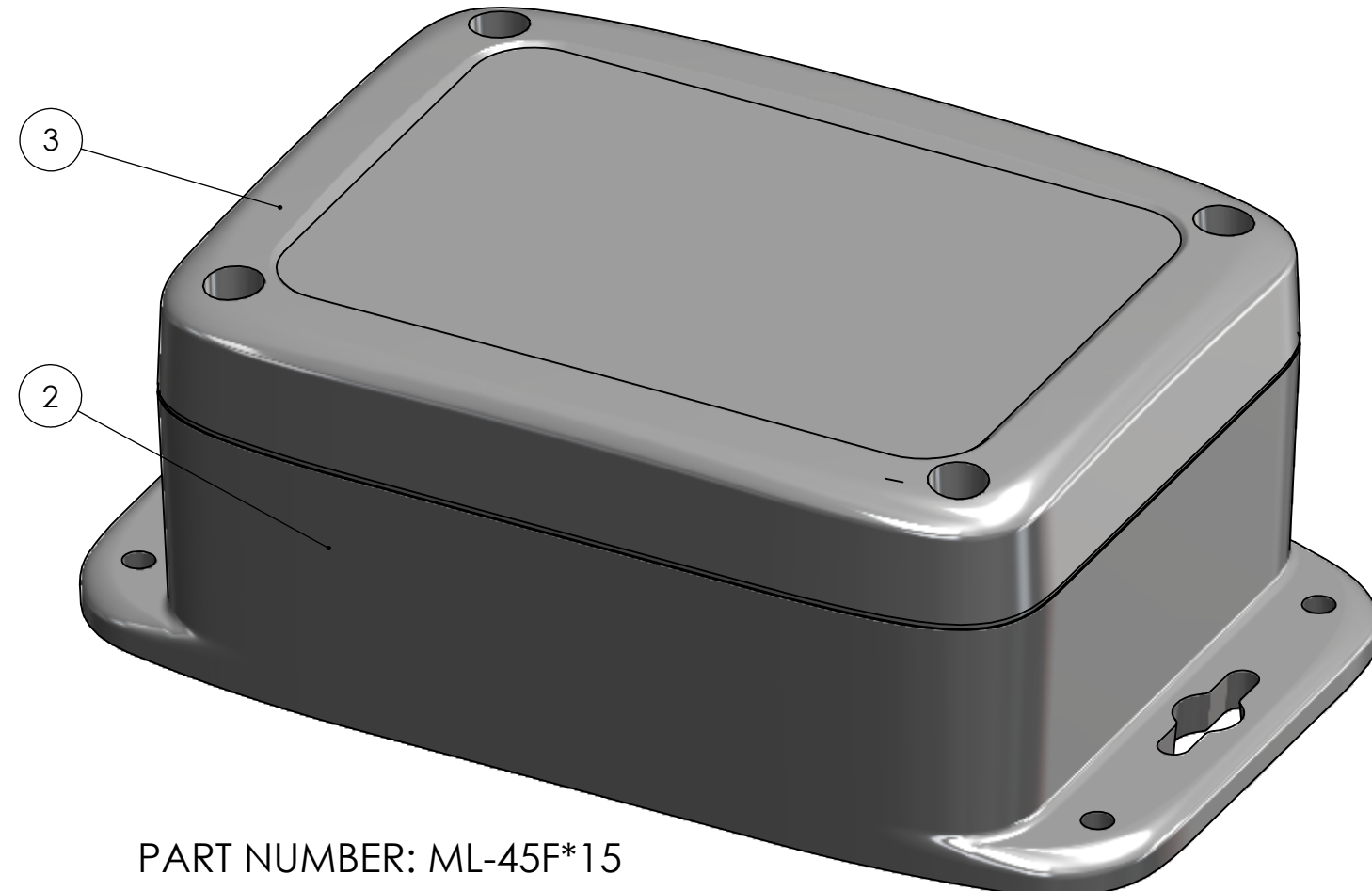
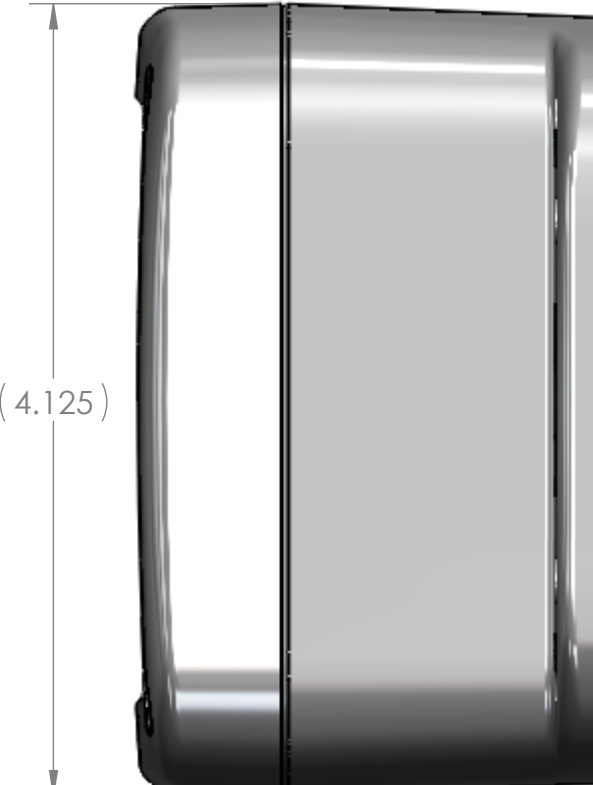
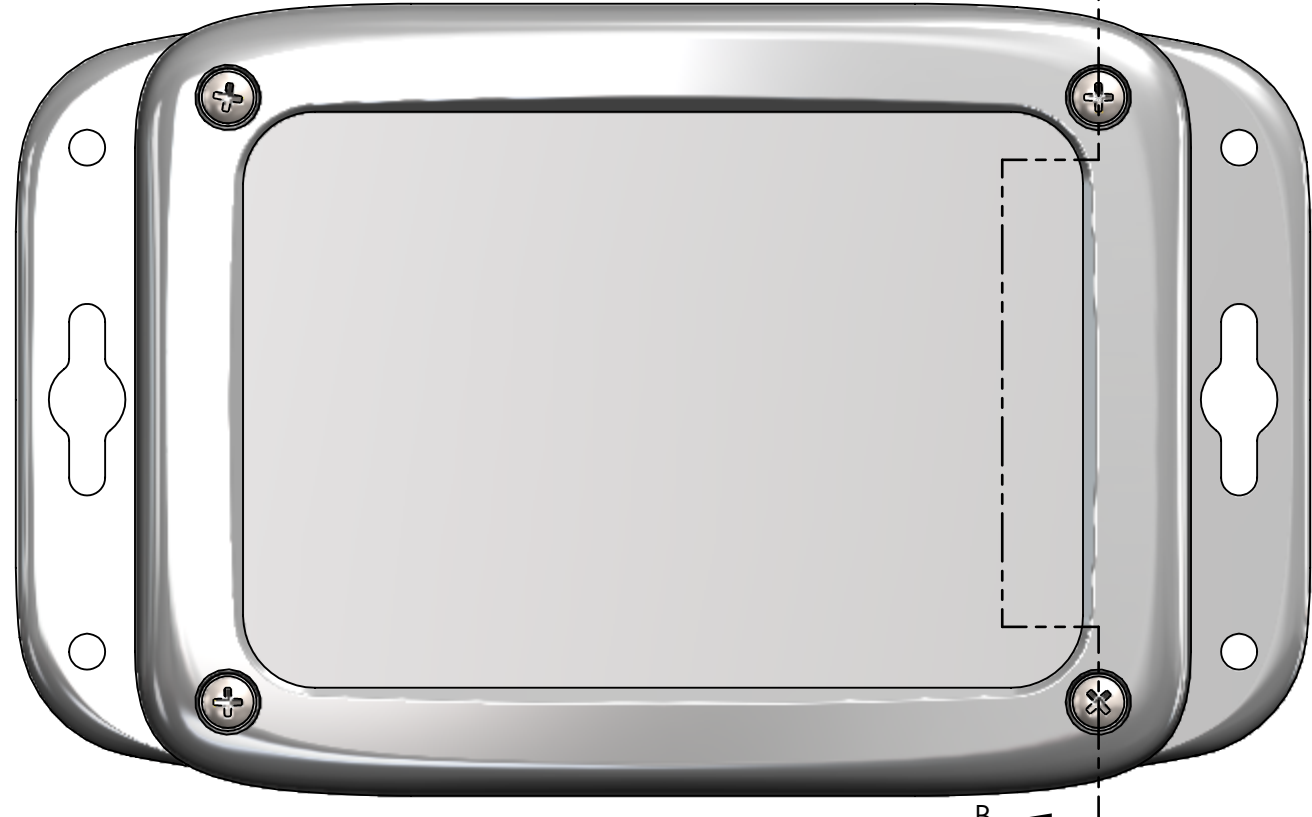
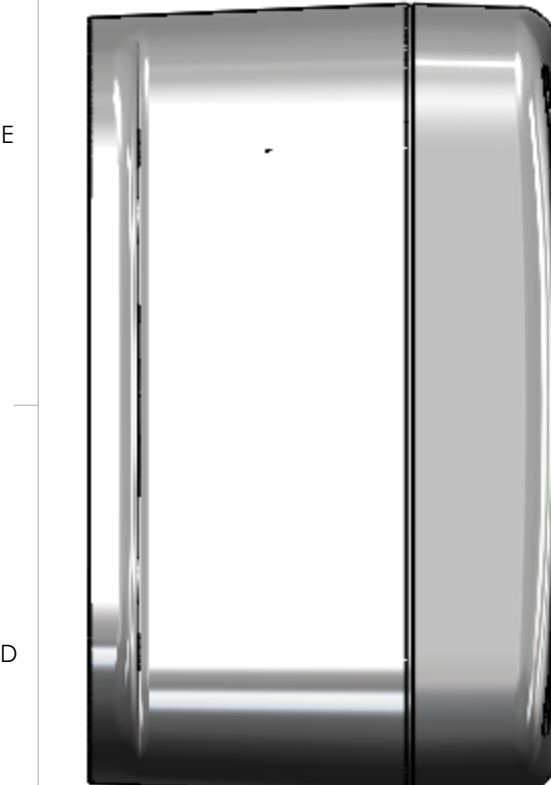
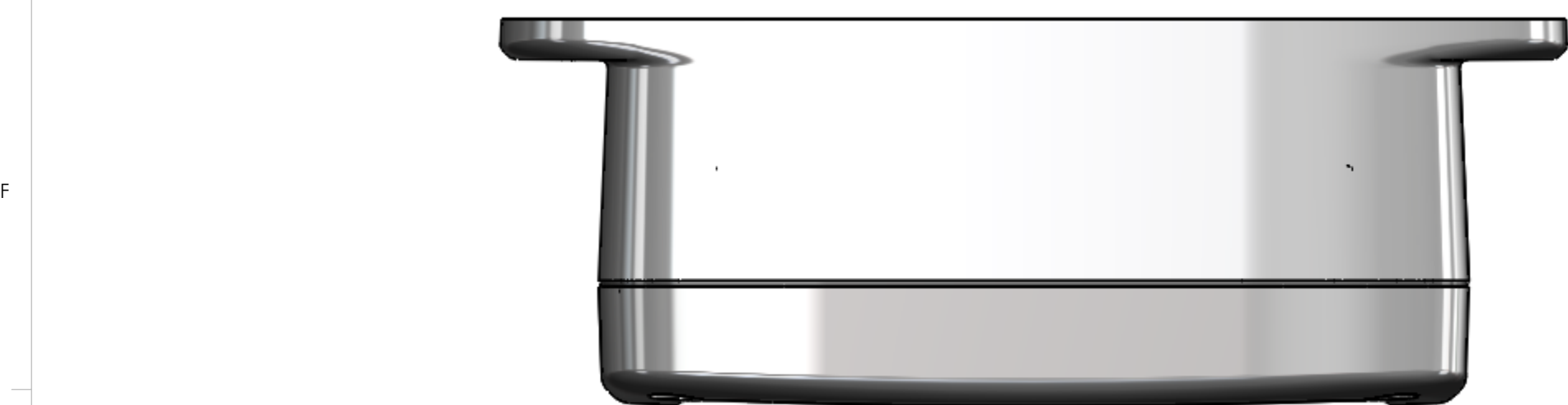
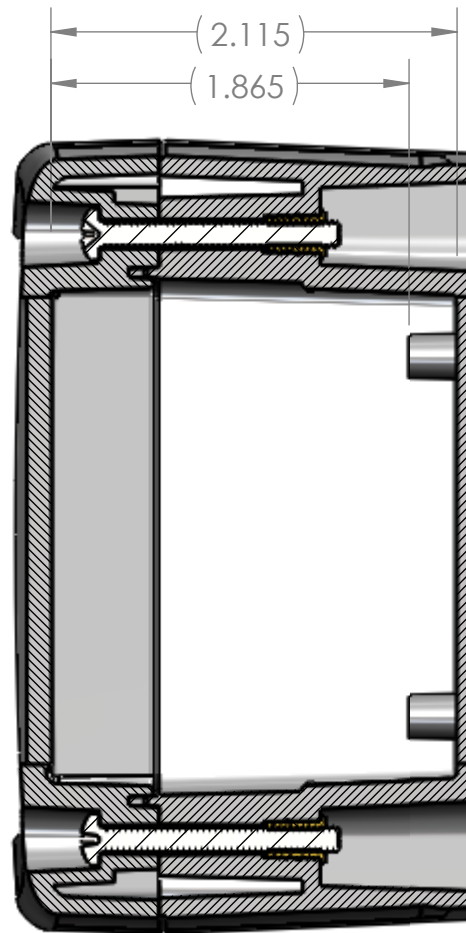
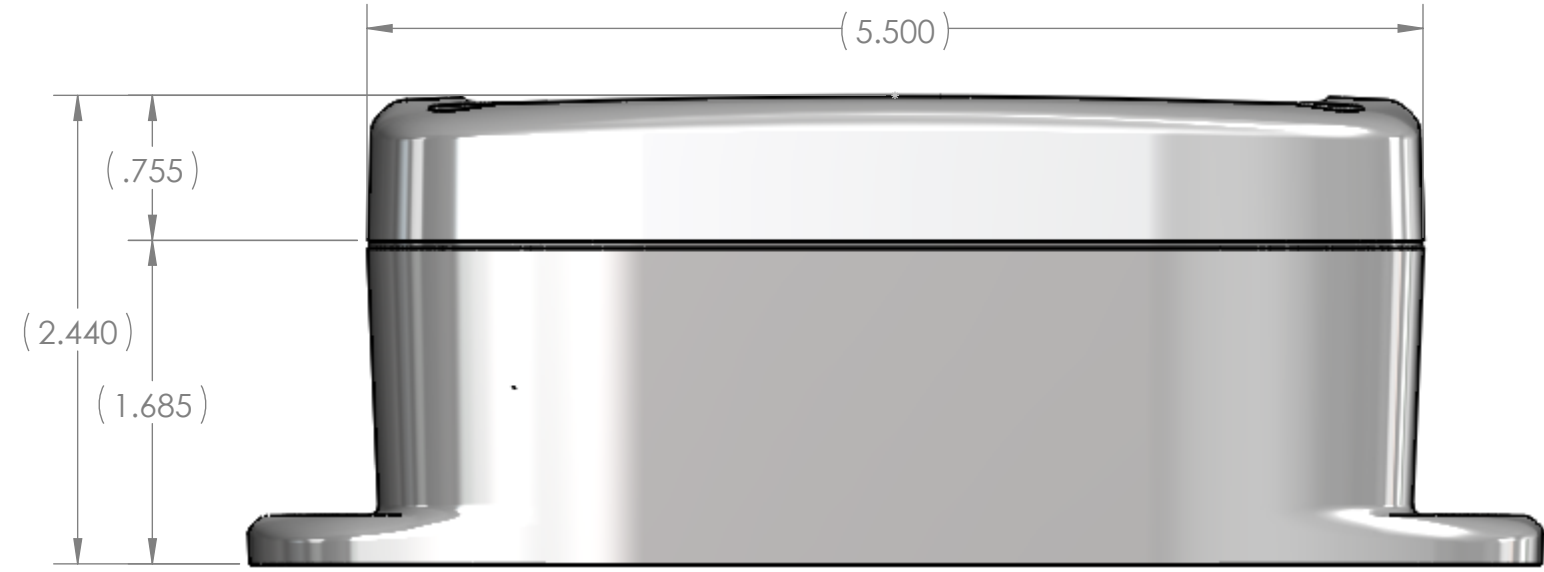


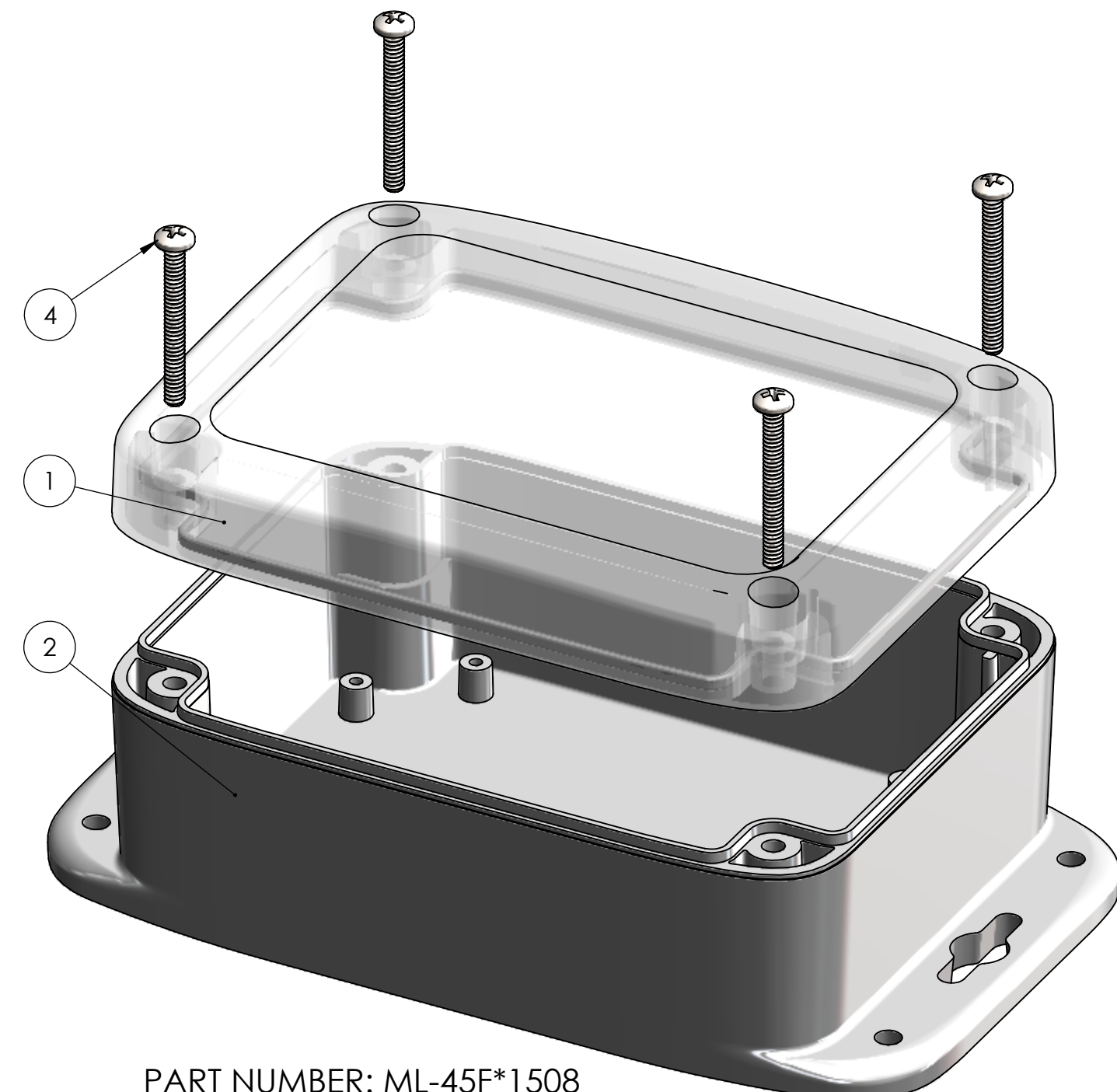
BOM Table								
ITEM NO.	PART NUMBER	Rev.	Description	FlameRating	Color	ML-45F*15/QTY.	ML-45F*1508/QTY.	
1	ML-45CG*08	-	COVER WITH GASKET	UL94V-0	CLEAR	-	1	
2	ML-45BF*15	-	BASE W/BRASS INSERTS	UL94V-0	LIGHT GRAY (RAL 7035)	1	1	
3	ML-45CG*15	-	COVER WITH GASKET	UL94V-0	LIGHT GRAY (RAL 7035)	1	-	
4	SCREWS-SS6-4	-	4-PACK: 6-32 X 1.25 PHMS			1	1	



PART NUMBER: ML-45F\*15



SECTION B-B



PART NUMBER: ML-45F\*1508

UNLESS OTHERWISE SPECIFIED:  
 DIMENSIONS ARE IN: INCHES[mm]  
 TOLERANCES: ANGULAR: ±2°  
 TWO PLACE DECIMAL: ±.010  
 THREE PLACE DECIMAL: ±.005  
 PRINTED GRAPHICS: ±.010

PROPRIETARY AND CONFIDENTIAL  
 THE INFORMATION CONTAINED IN THIS  
 DRAWING IS THE SOLE PROPERTY OF  
 POLYCASE. ANY REPRODUCTION IN PART  
 OR AS A WHOLE WITHOUT THE WRITTEN  
 PERMISSION OF POLYCASE IS PROHIBITED.  
 CAD FILE: ML-45F

PART NO. SEE BOM  
 MATERIAL SEE BOM  
 FLAME RATING SEE BOM

NAME: D.M.F.  
 DATE: 2/28/2014  
 DRAWN: 2/5/2013  
 CHECKED: -

SIZE C  
 SCALE: 1:1

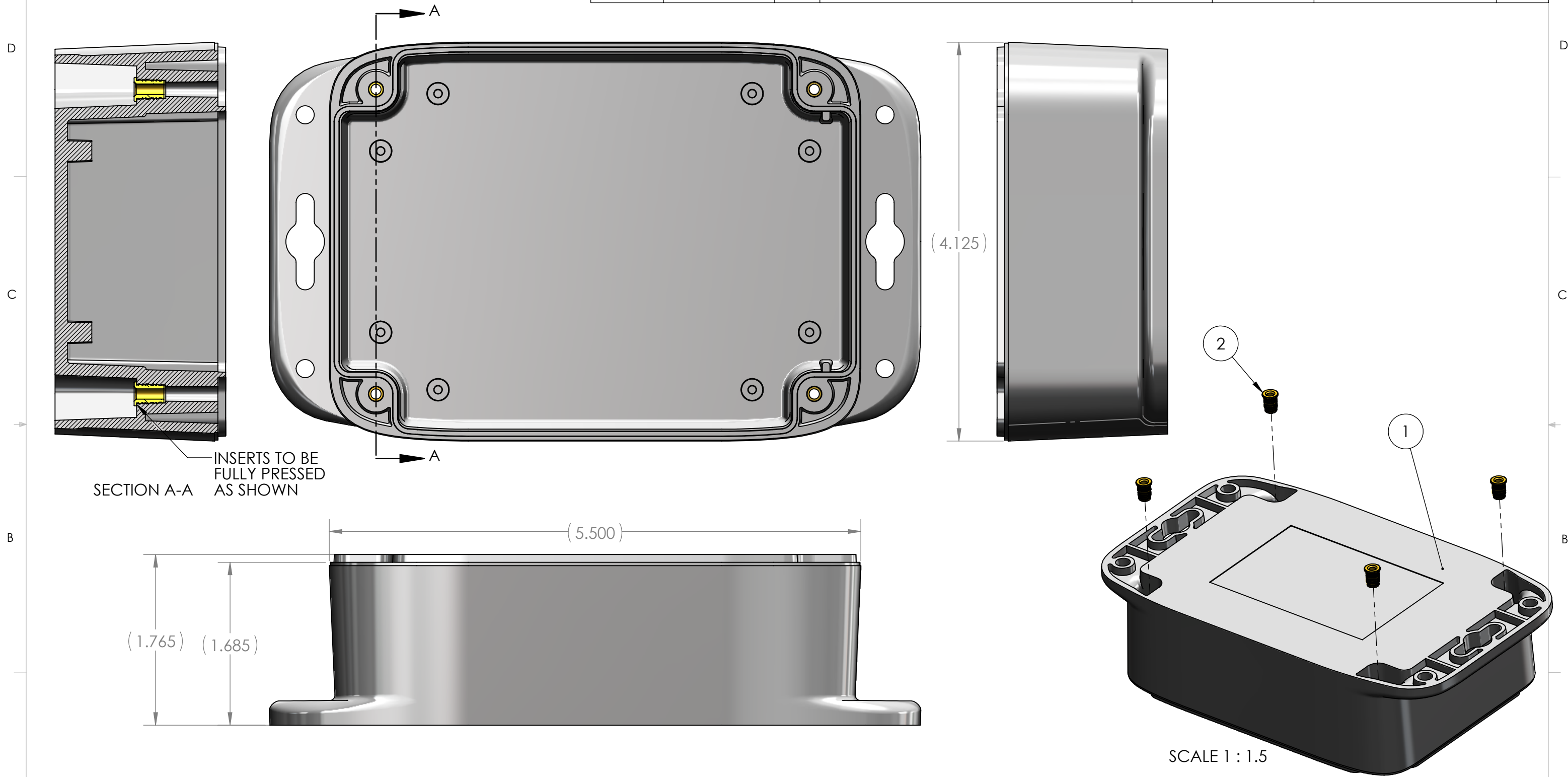
1305 CHESTER RD. PARKWAY AVON, OHIO 44011-1083 U.S.A.  
 PH: 1-800-548-1233 440-934-0444 FAX: 440-934-0088

ASSEMBLY REV

SHEET 1 OF 1

REV.	DESCRIPTION	ZONE	BY	APP'D	DATE
REVISIONS					

BOM Table								
ITEM NO.	PART NUMBER	Rev.	Description	Material	FlameRating	Color	QTY.	
1	ML-45BFN*15	-	BASE W/FLANGES & PCB BOSSES	PC	UL94V-0	LIGHT GRAY (RAL 7035)	1	
2	INSERT-3	-	THREADED INSERT #6-32	BRASS			4	

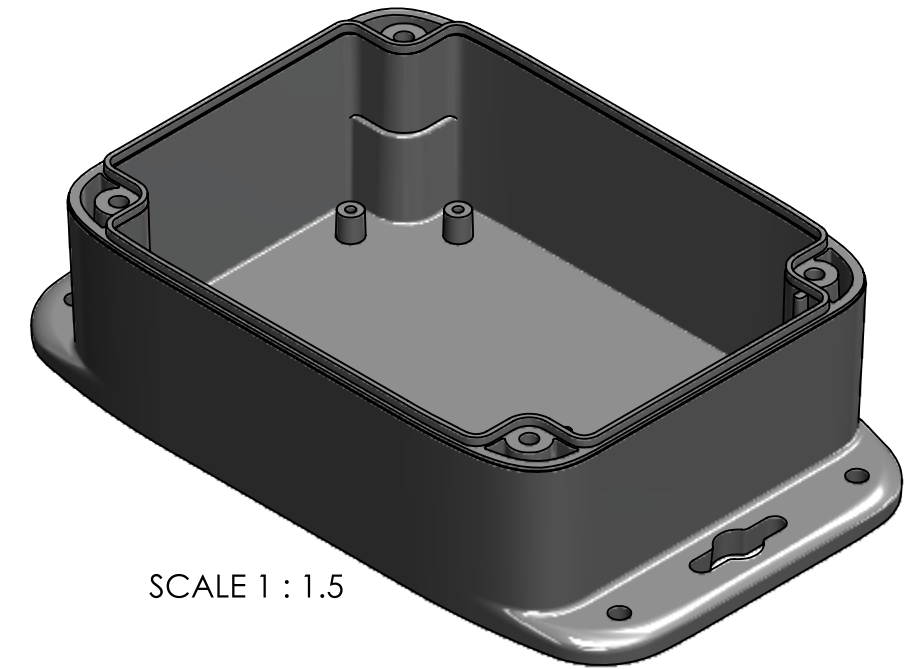
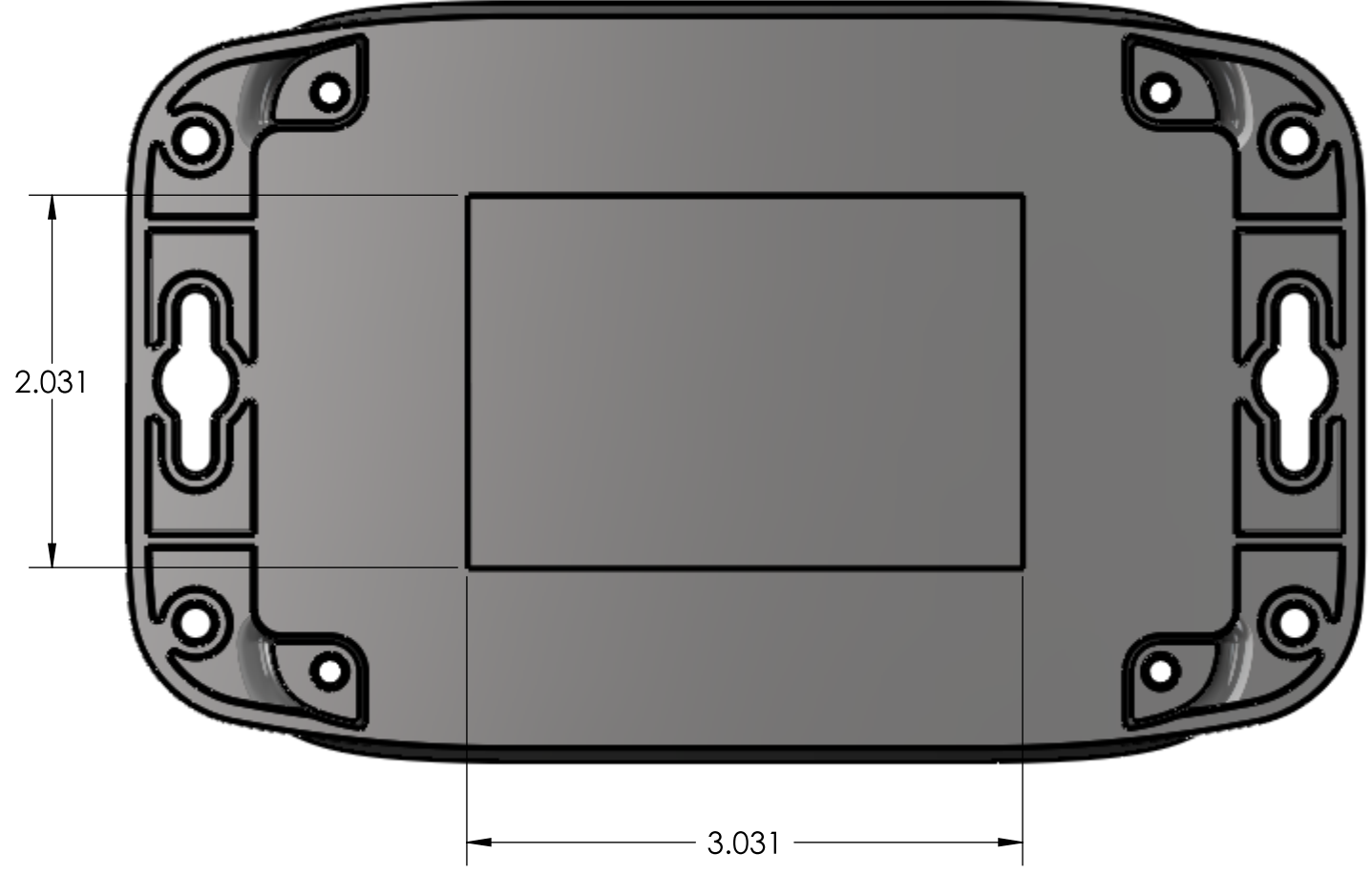
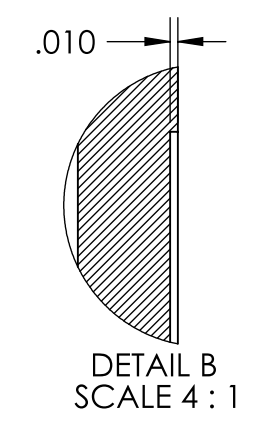
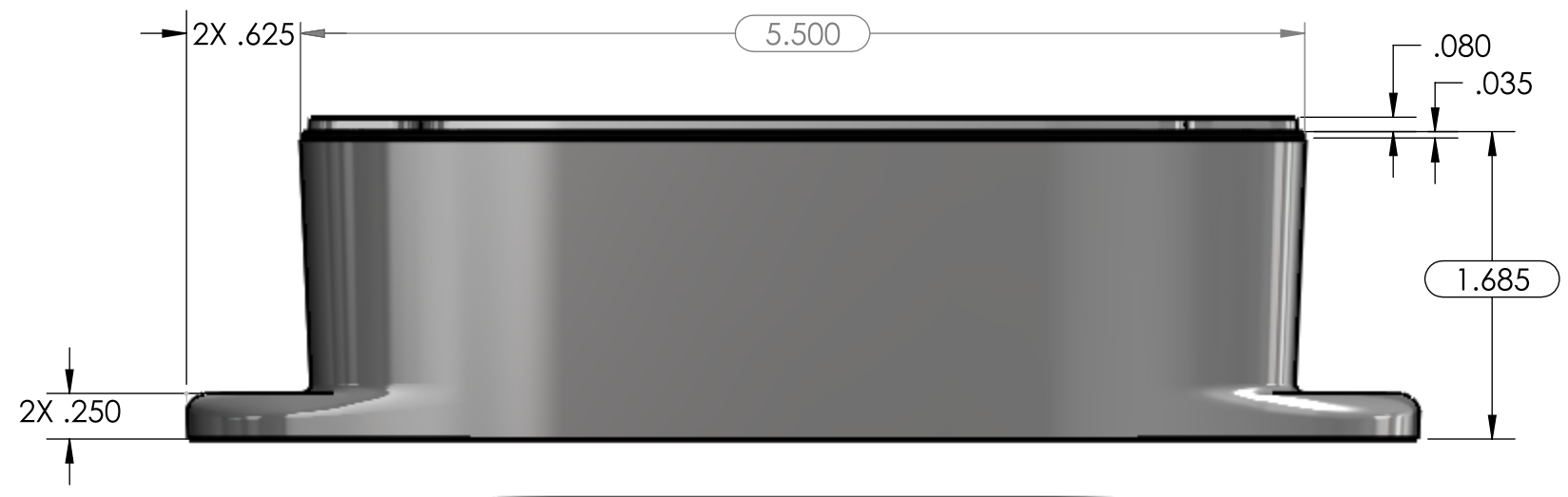
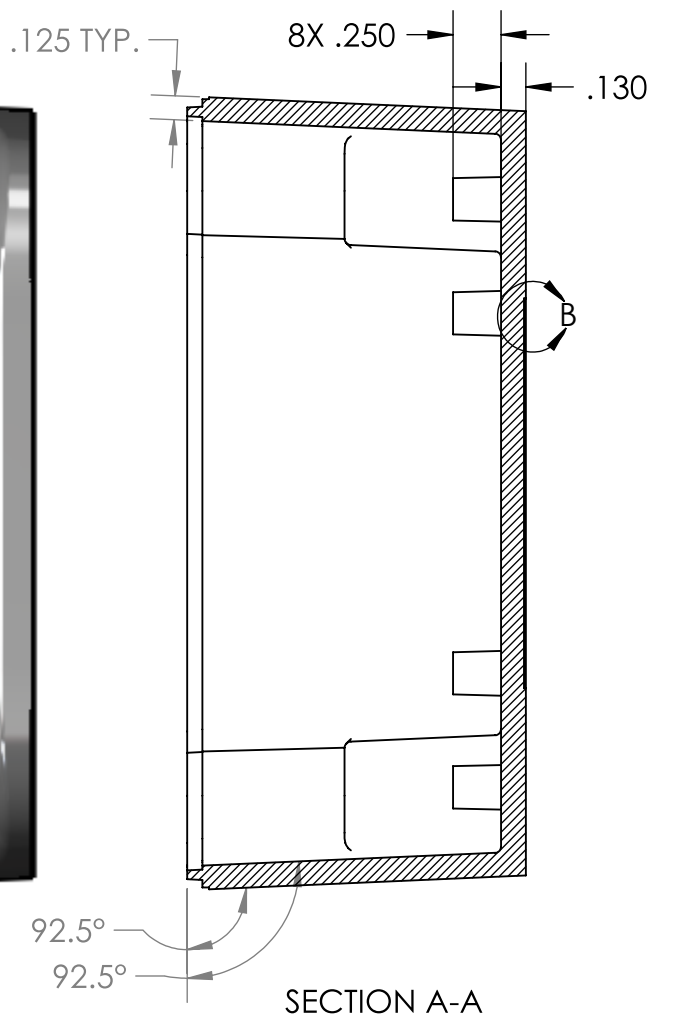
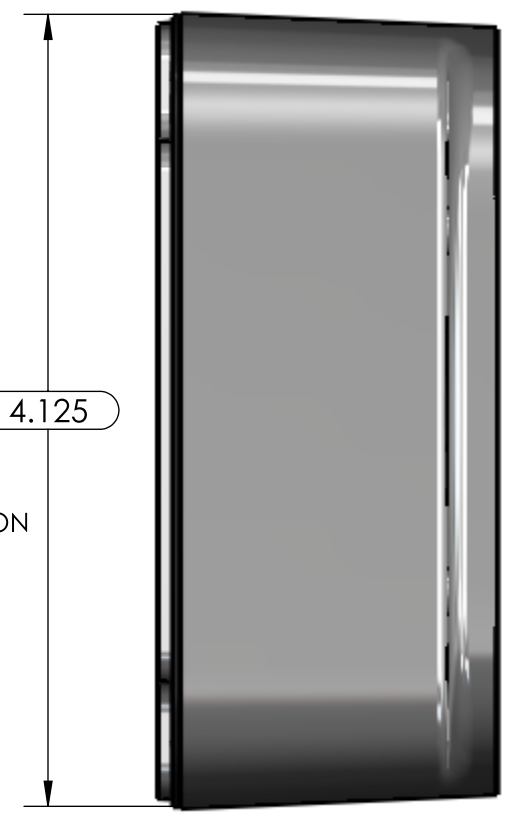
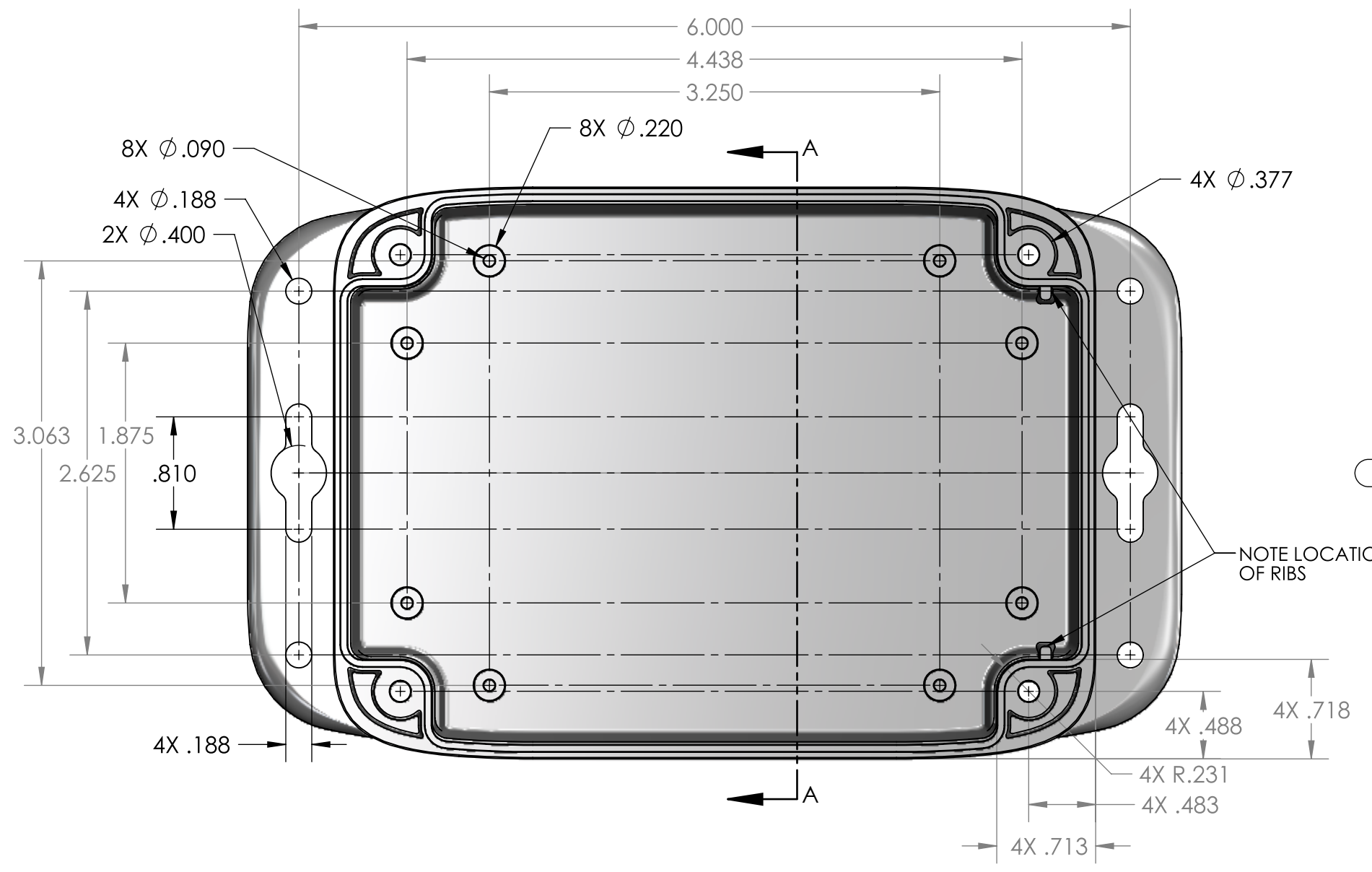


UNLESS OTHERWISE SPECIFIED: DIMENSIONS ARE IN: INCHES[mm] TOLERANCES: ANGULAR: ±2° TWO PLACE DECIMAL: ±.010 THREE PLACE DECIMAL: ±.005 PRINTED GRAPHICS: ±.010		PART NO. ML-45BF*15		 <small>1305 CHESTER IND. PARKWAY AVON, OHIO 44011-1083 U.S.A. PH#: 1-800-248-1233, 440-934-0444 FAX#: 440-934-0088</small>	
PROPRIETARY AND CONFIDENTIAL THE INFORMATION CONTAINED IN THIS DRAWING IS THE SOLE PROPERTY OF POLYCASE. ANY REPRODUCTION IN PART OR AS A WHOLE WITHOUT THE WRITTEN PERMISSION OF POLYCASE IS PROHIBITED. CAD FILE: ML-45BF		MATERIAL			
FLAME RATING UL94V-0		SIZE <b>B</b>		BASE W/BRASS INSERTS	
DRAWN CHECKED		NAME DATE		REV	
		D.M.F. 2/28/2014		-	
		2/5/2013		SCALE: 1:1	
				SHEET 1 OF 1	

REV.	DESCRIPTION	ZONE	BY	APPR'D	DATE
REVISIONS					

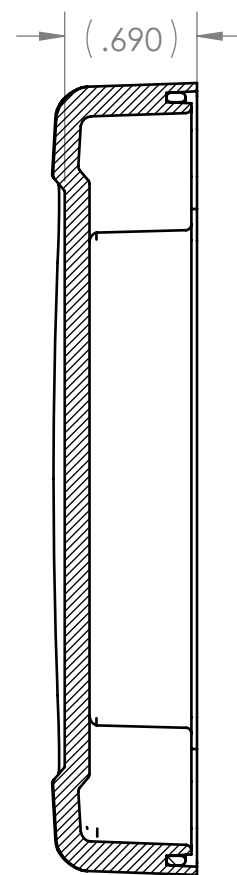
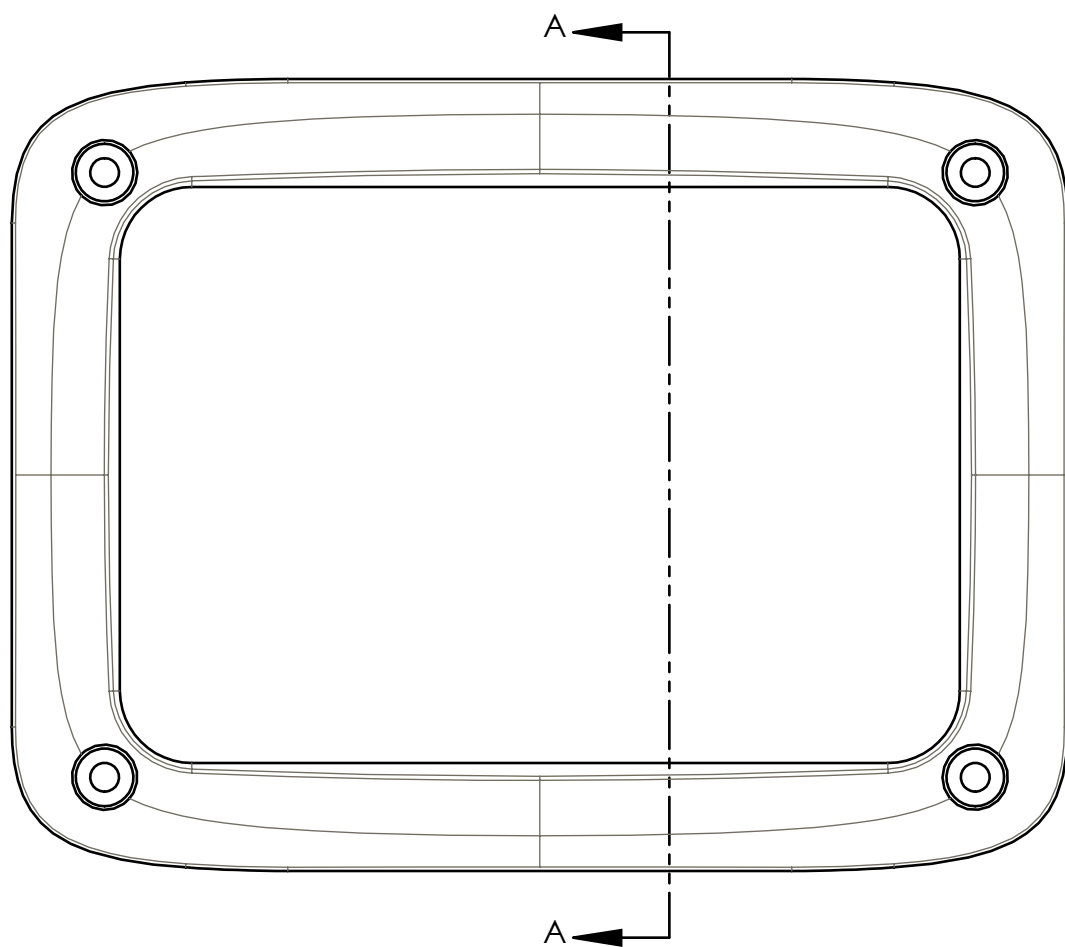
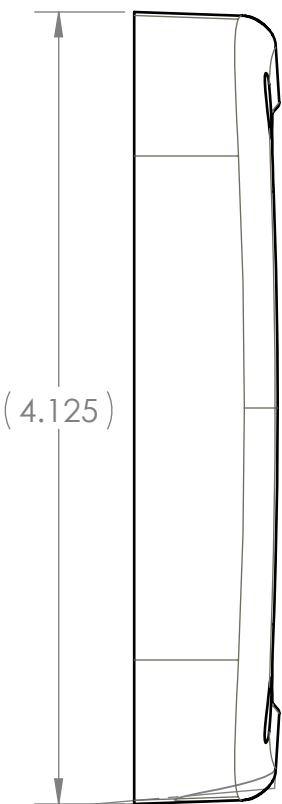
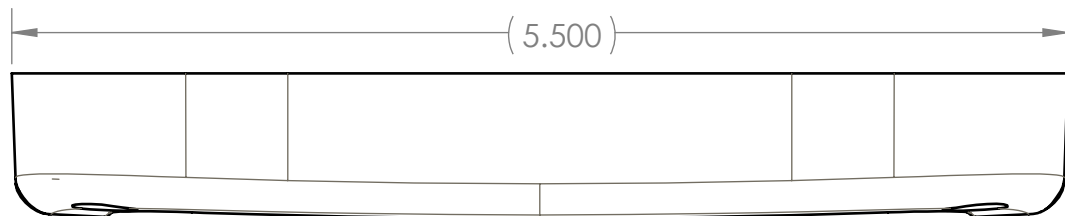
8 7 6 5 4 3 2 1

8 7 6 5 4 3 2 1

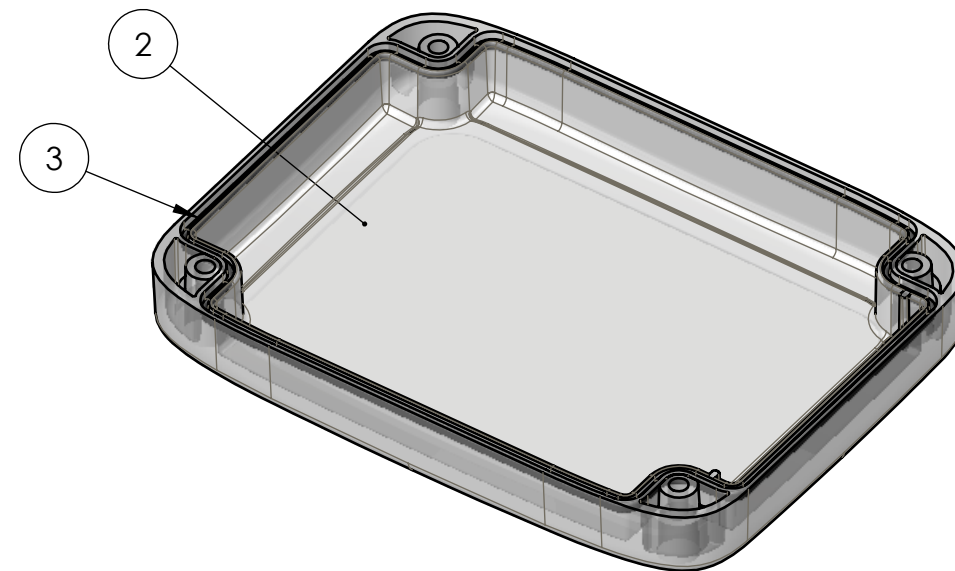


UNLESS OTHERWISE SPECIFIED: DIMENSIONS ARE IN: INCHES[mm] TOLERANCES: ANGULAR: $\pm$ 2° TWO PLACE DECIMAL: $\pm$ -. THREE PLACE DECIMAL: $\pm$ -. PRINTED GRAPHICS: $\pm$ -. PROPRIETARY AND CONFIDENTIAL THE INFORMATION CONTAINED IN THIS DRAWING IS THE SOLE PROPERTY OF POLYCASE. ANY REPRODUCTION IN PART OR AS A WHOLE WITHOUT THE WRITTEN PERMISSION OF POLYCASE IS PROHIBITED. CAD FILE: ML-45BFN		PART NO. ML-45BFN*15	 1305 CHESTER RD. PARKWAY AVON, OHIO 44011-1083 U.S.A. PH: 1-800-248-1233 440-934-0444 FAX: 440-934-0088	FLAME RATING UL94V-0	SIZE C	BASE W/FLANGES & PCB BOSSSES	REV -																
<table border="1"> <thead> <tr> <th>REV.</th> <th>DESCRIPTION</th> <th>ZONE</th> <th>BY</th> <th>APPR'D</th> <th>DATE</th> </tr> </thead> <tbody> <tr> <td colspan="6" style="text-align: center;">REVISIONS</td> </tr> </tbody> </table>		REV.		DESCRIPTION	ZONE	BY	APPR'D	DATE	REVISIONS						MATERIAL PC	<table border="1"> <tr> <th>NAME</th> <th>DATE</th> </tr> <tr> <td>D.M.F.</td> <td>2/27/2014</td> </tr> <tr> <td>CHECKED</td> <td>2/4/2013</td> </tr> </table>	NAME	DATE	D.M.F.	2/27/2014	CHECKED	2/4/2013	SCALE: 1:1
REV.	DESCRIPTION	ZONE	BY	APPR'D	DATE																		
REVISIONS																							
NAME	DATE																						
D.M.F.	2/27/2014																						
CHECKED	2/4/2013																						

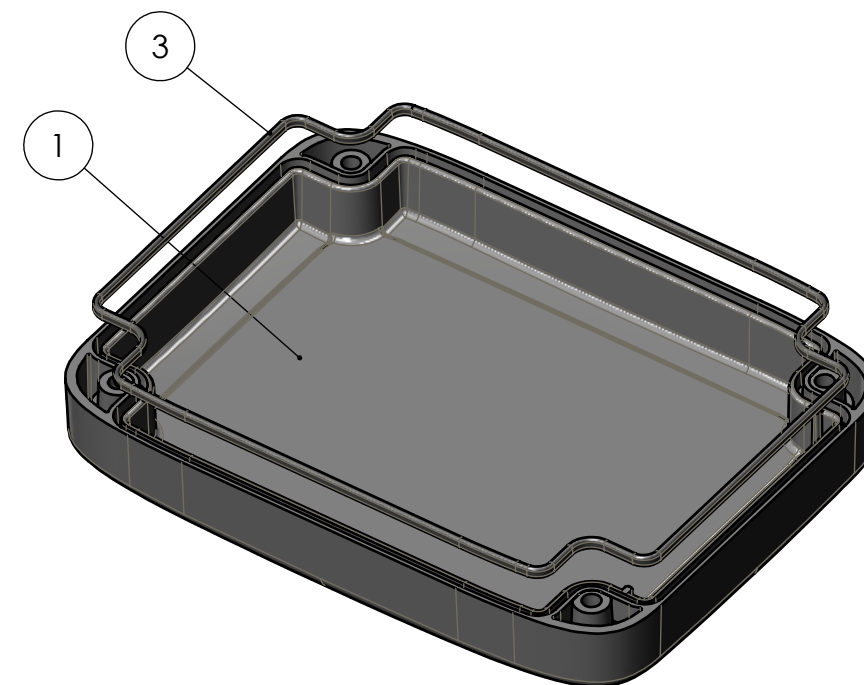
BOM Table								
ITEM NO.	PART NUMBER	Rev.	Description	Material	FlameRating	Color	ML-45CG*15/QTY.	ML-45CG*08/QTY.
1	ML-45C*15	-	COVER	PC	UL94V-0	LIGHT GRAY (RAL 7035)	1	-
2	ML-45C*08	-	COVER	PC	UL94V-0	CLEAR	-	1
3	GASKET-7	-	GASKET	SILICONE		CLEAR	1	1



SECTION A-A



SCALE 1 : 1.5



SCALE 1 : 1.5

UNLESS OTHERWISE SPECIFIED:  
 DIMENSIONS ARE IN: INCHES[mm]  
 TOLERANCES: ANGULAR: ±2°  
 TWO PLACE DECIMAL: ±.010  
 THREE PLACE DECIMAL: ±.005  
 PRINTED GRAPHICS: ±.010

PROPRIETARY AND CONFIDENTIAL  
 THE INFORMATION CONTAINED IN THIS  
 DRAWING IS THE SOLE PROPERTY OF  
 POLYCASE. ANY REPRODUCTION IN PART  
 OR AS A WHOLE WITHOUT THE WRITTEN  
 PERMISSION OF POLYCASE IS PROHIBITED.  
 CAD FILE: ML-45CG

PART NO.  
 SEE BOM  
 MATERIAL  
 SEE BOM

FLAME RATING  
 SEE BOM

DRAWN	NAME	DATE
CHECKED	-	2/28/2014
		2/5/2013

**polycase**  
 1305 CHESTER IND. PARKWAY AVON, OHIO 44011-1083 U.S.A.  
 PH#: 1-800-248-1233, 440-934-0444 FAX#: 440-934-0088

COVER WITH GASKET

REV

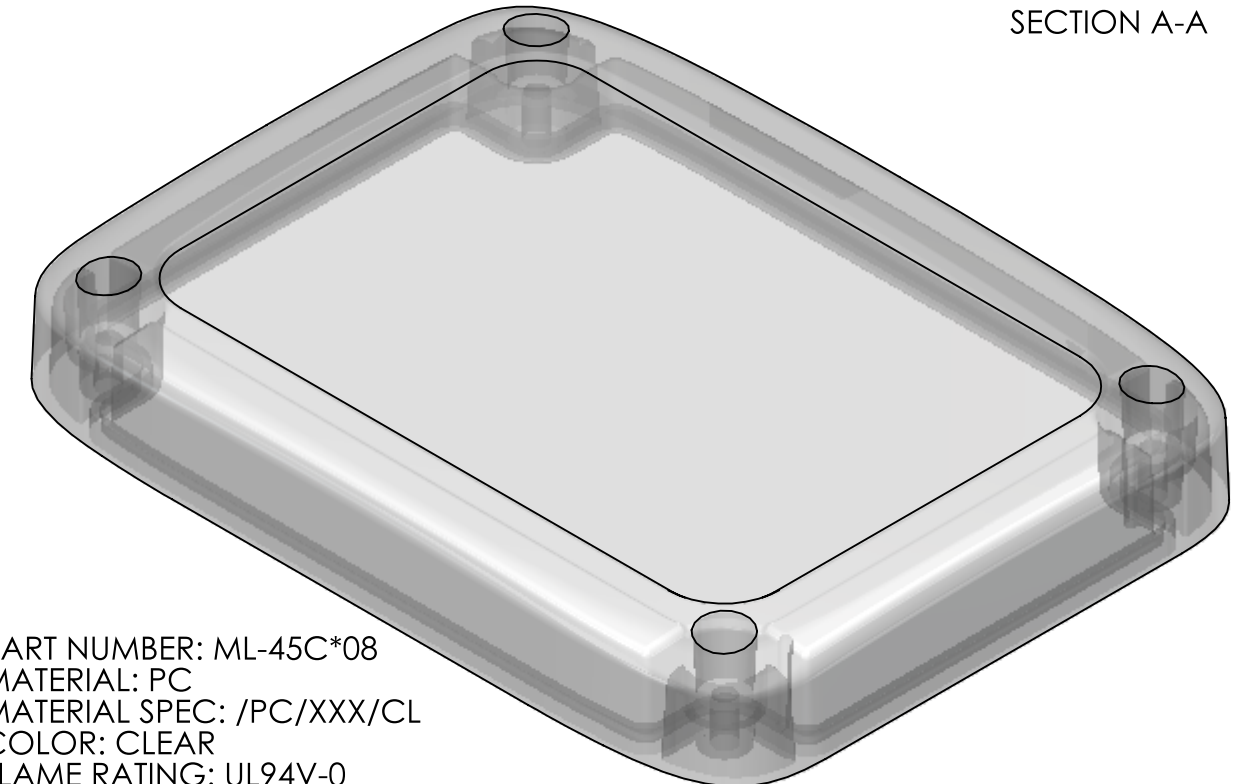
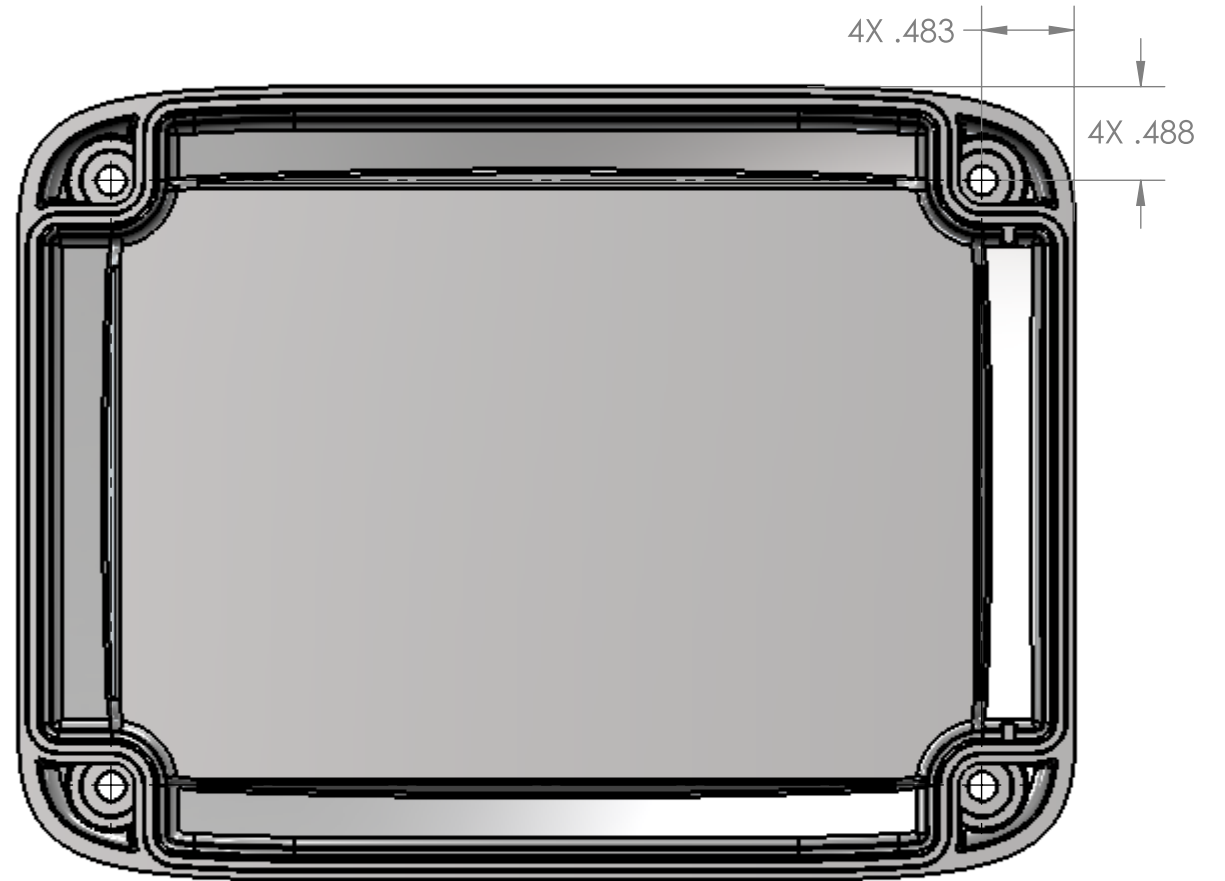
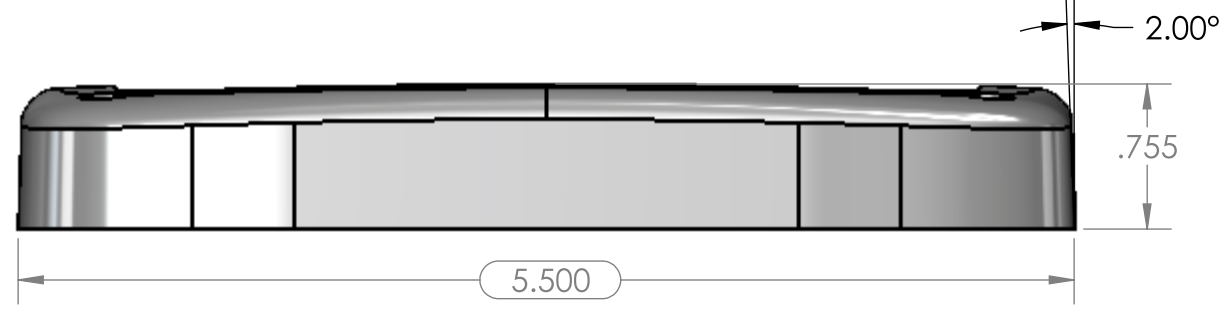
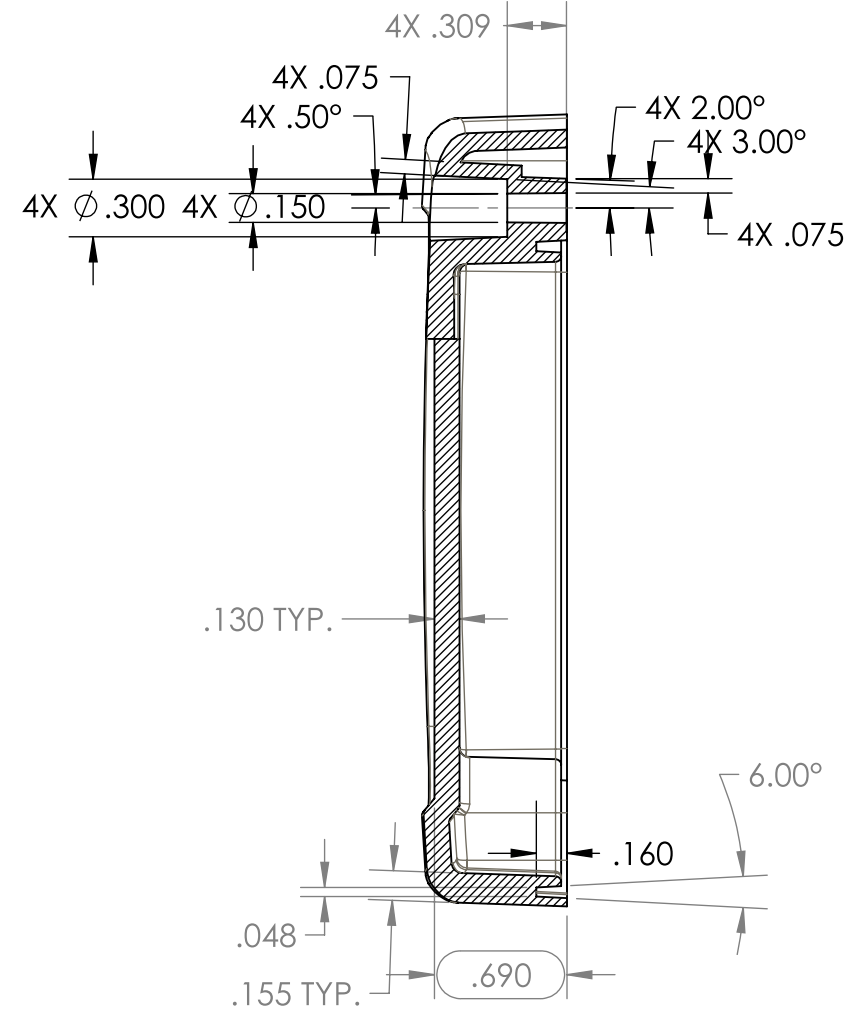
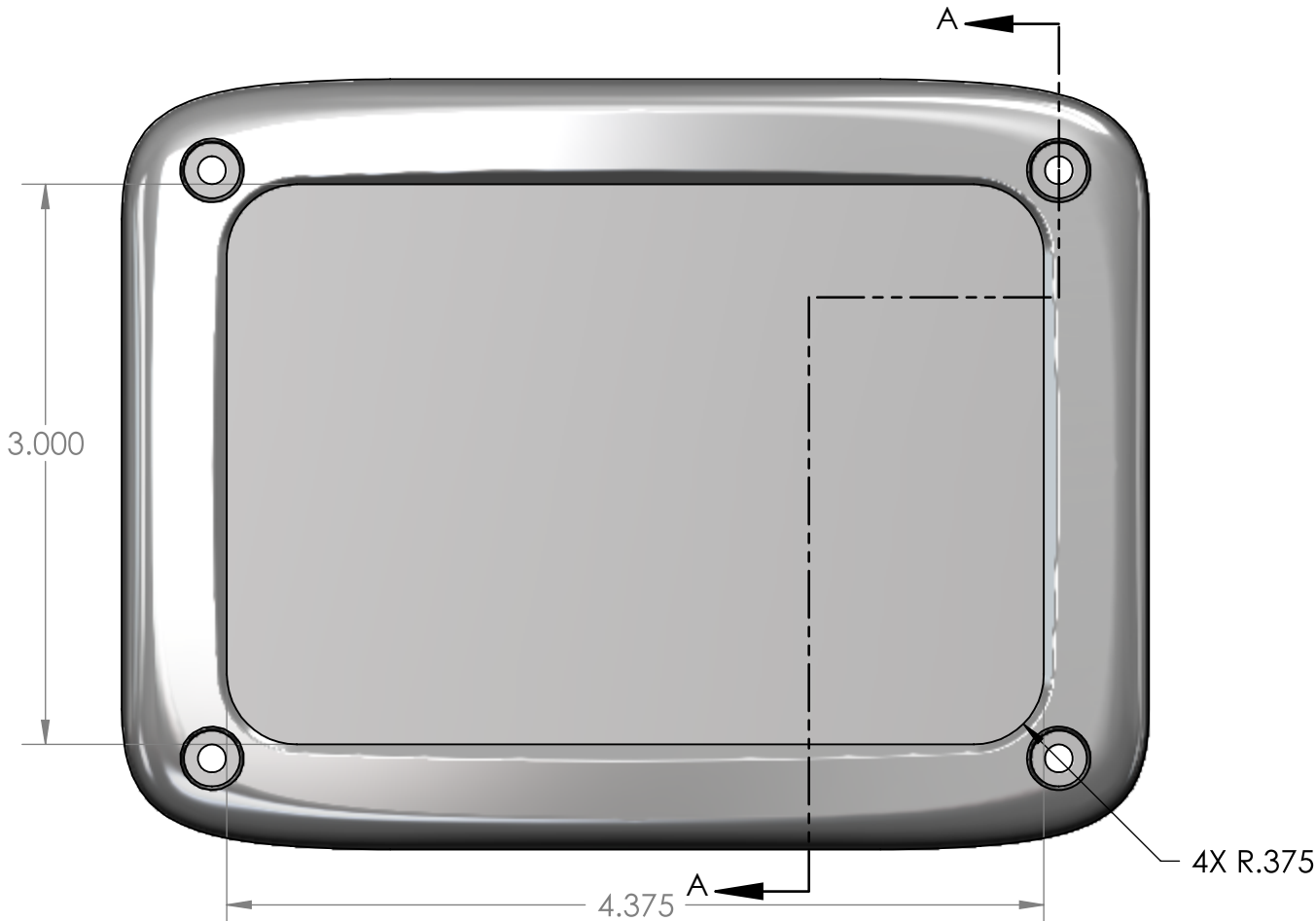
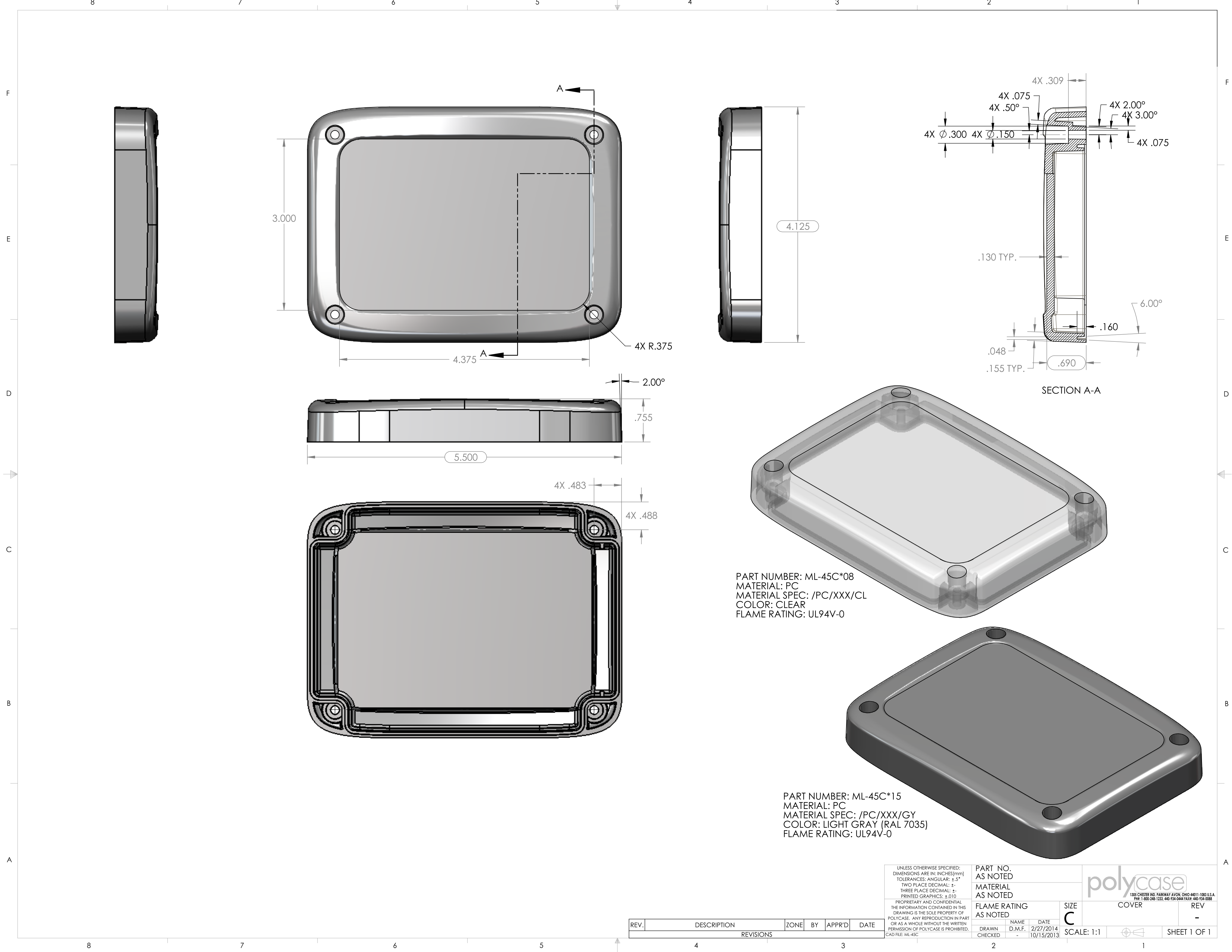
-

SIZE  
**B**  
 SCALE: 1:1

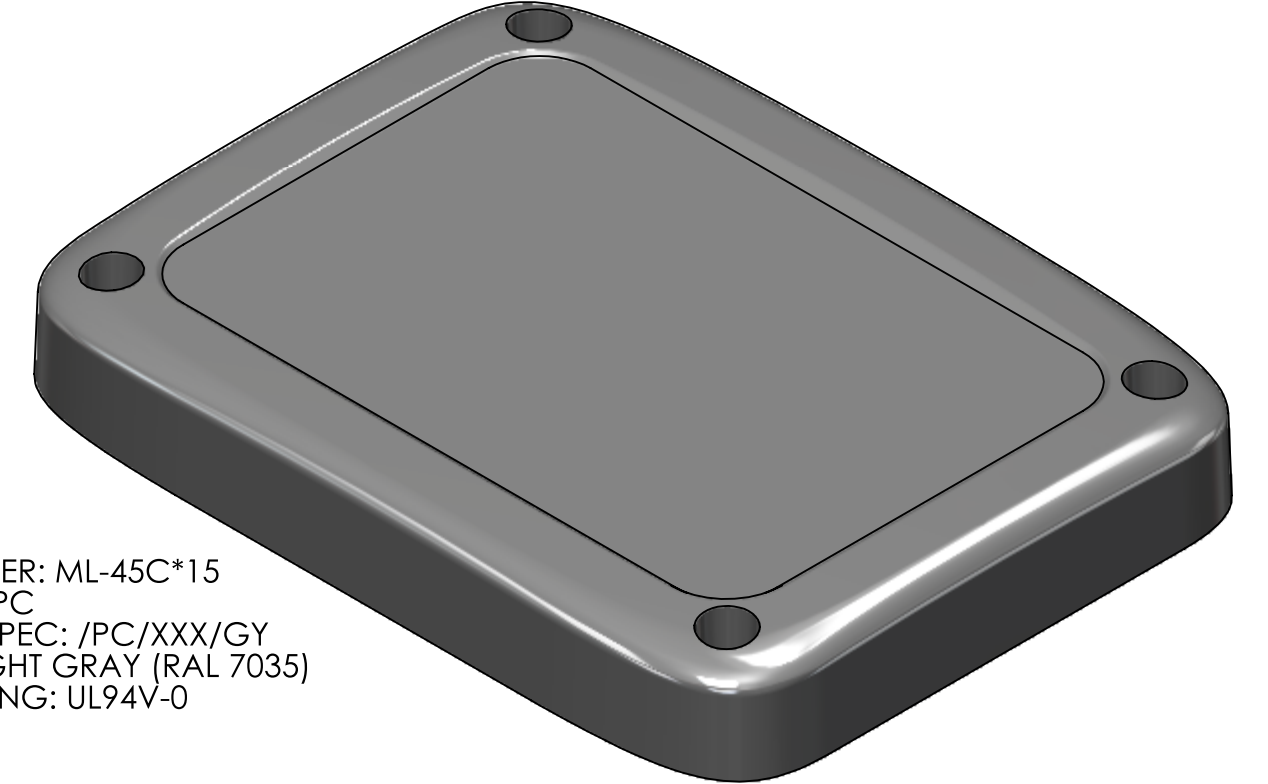


SHEET 1 OF 1

REV.	DESCRIPTION	ZONE	BY	APPR'D	DATE
REVISIONS					



PART NUMBER: ML-45C\*08  
 MATERIAL: PC  
 MATERIAL SPEC: /PC/XXX/CL  
 COLOR: CLEAR  
 FLAME RATING: UL94V-0



PART NUMBER: ML-45C\*15  
 MATERIAL: PC  
 MATERIAL SPEC: /PC/XXX/GY  
 COLOR: LIGHT GRAY (RAL 7035)  
 FLAME RATING: UL94V-0

REV.	DESCRIPTION	ZONE	BY	APPR'D	DATE
REVISIONS					

UNLESS OTHERWISE SPECIFIED:  
 DIMENSIONS ARE IN: INCHES[mm]  
 TOLERANCES: ANGULAR: ±.5°  
 TWO PLACE DECIMAL: ±.  
 THREE PLACE DECIMAL: ±.  
 PRINTED GRAPHICS: ±.010

PROPRIETARY AND CONFIDENTIAL  
 THE INFORMATION CONTAINED IN THIS  
 DRAWING IS THE SOLE PROPERTY OF  
 POLYCASE. ANY REPRODUCTION IN PART  
 OR AS A WHOLE WITHOUT THE WRITTEN  
 PERMISSION OF POLYCASE IS PROHIBITED.  
 CAD FILE: ML-45C

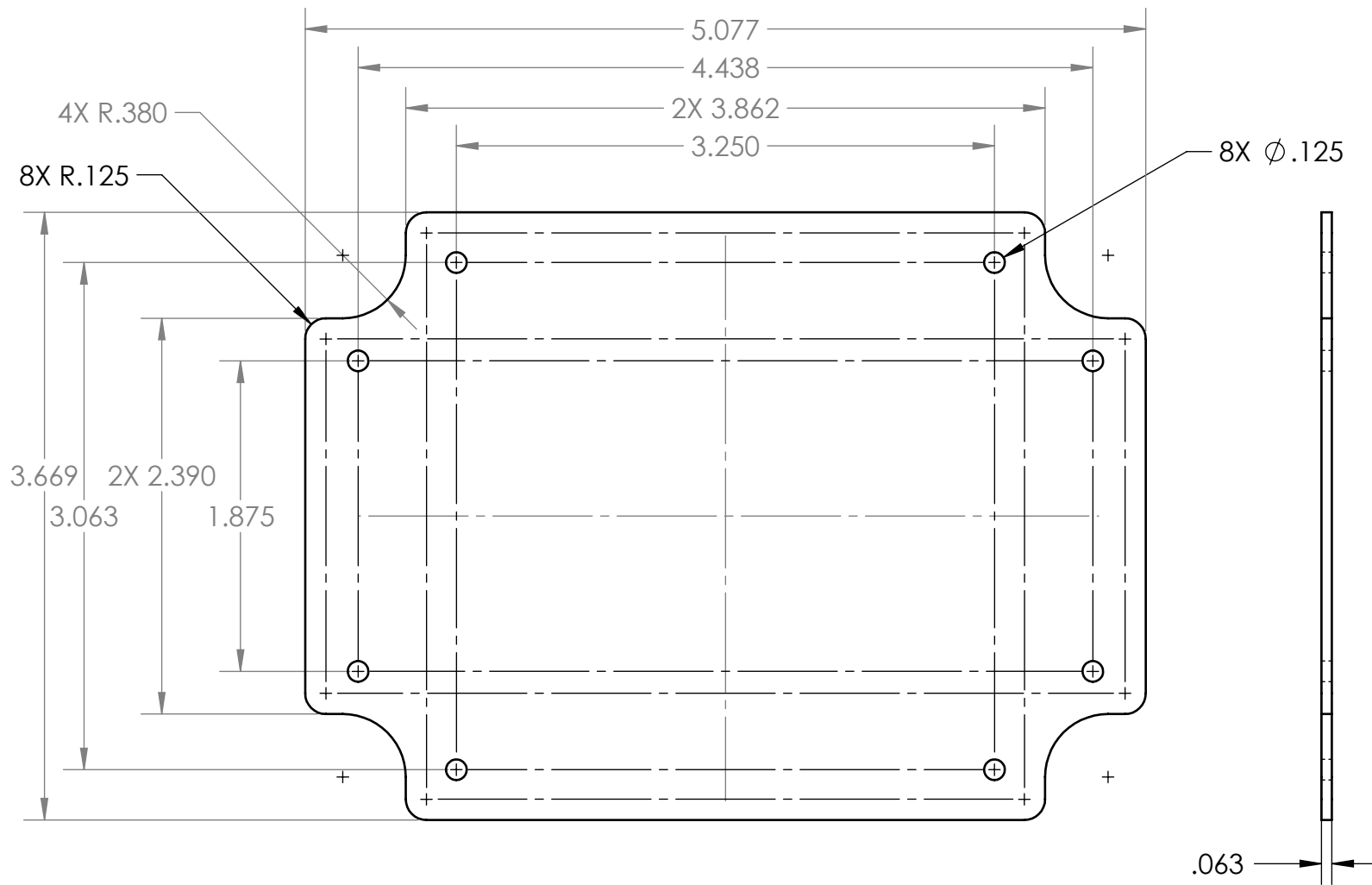
PART NO. AS NOTED	MATERIAL AS NOTED	FLAME RATING AS NOTED	SIZE C
DRAWN CHECKED			NAME DATE
			D.M.F. 10/15/2013

1305 CHESTER RD. PARKWAY AVON, OHIO 44011-1083 U.S.A.  
 PH: 1-800-248-1233 440-934-0444 FAX: 440-934-0088



COVER REV -

SCALE: 1:1

SHEET 1 OF 1



NOTES:  
1. INCLUDES .031 CLEARANCE FROM INTERIOR.

UNLESS OTHERWISE SPECIFIED: DIMENSIONS ARE IN: INCHES[mm] TOLERANCES: ANGULAR: ±2° TWO PLACE DECIMAL: ±.010 THREE PLACE DECIMAL: ±.005 PRINTED GRAPHICS: ±.010	PART NO. ML-45BF-PCB		 <small>1305 CHESTER IND. PARKWAY AVON, OHIO 44011-1083 U.S.A. PH#: 1-800-248-1233, 440-934-0444 FAX#: 440-934-0088</small>					
	MATERIAL							
PROPRIETARY AND CONFIDENTIAL THE INFORMATION CONTAINED IN THIS DRAWING IS THE SOLE PROPERTY OF POLYCASE. ANY REPRODUCTION IN PART OR AS A WHOLE WITHOUT THE WRITTEN PERMISSION OF POLYCASE IS PROHIBITED. CAD FILE: ML-45BF-PCB	FLAME RATING	SIZE <b>A</b>	PCB TEMPLATE (NOT SUPPLIED)					
		NAME DATE D.M.F. 2/28/2014	REV -					
REV.	DESCRIPTION	ZONE	BY	APPR'D	DATE	SCALE: 1:1		SHEET 1 OF 1

5

4

3

2

1

D

C

B

A