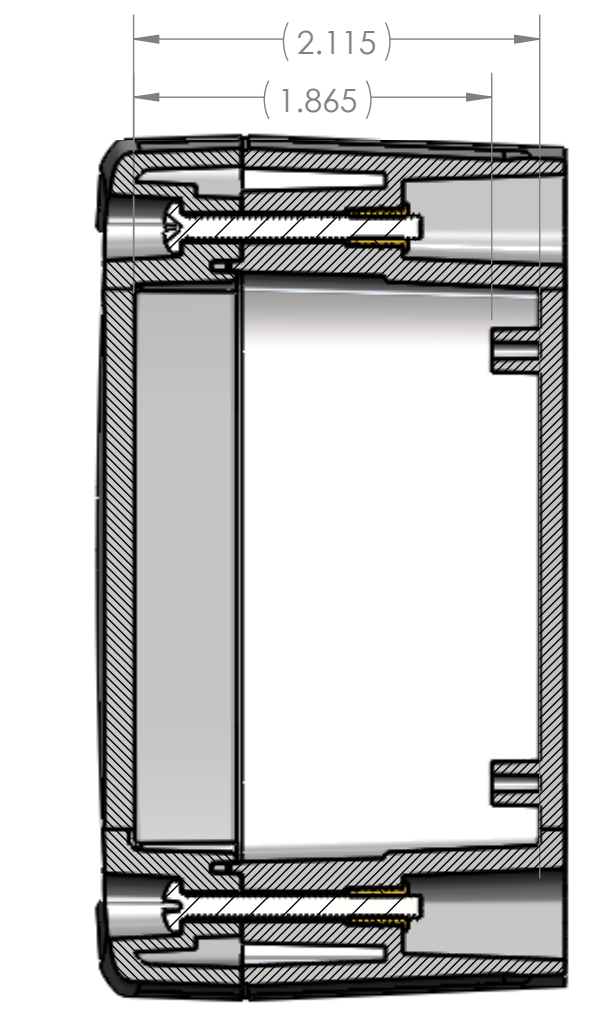
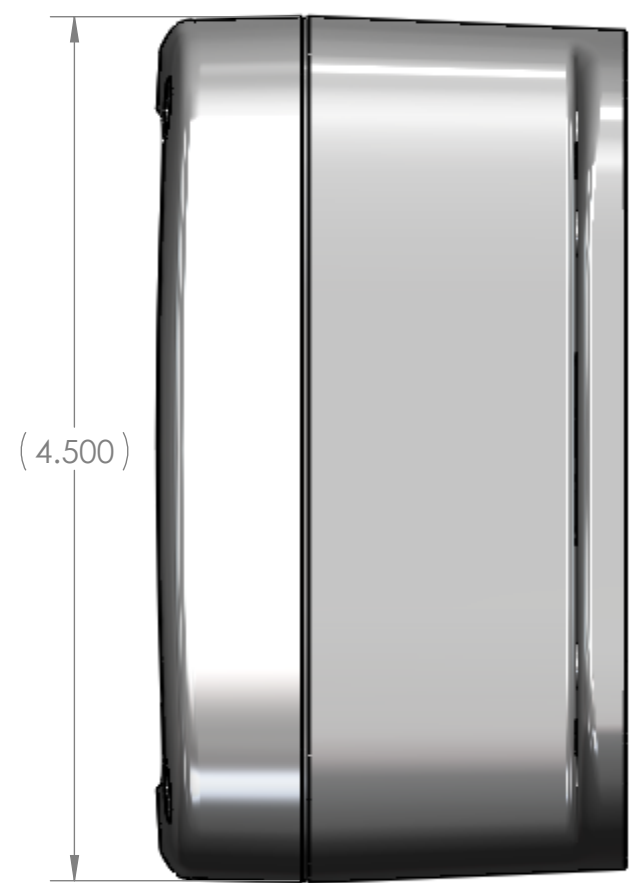
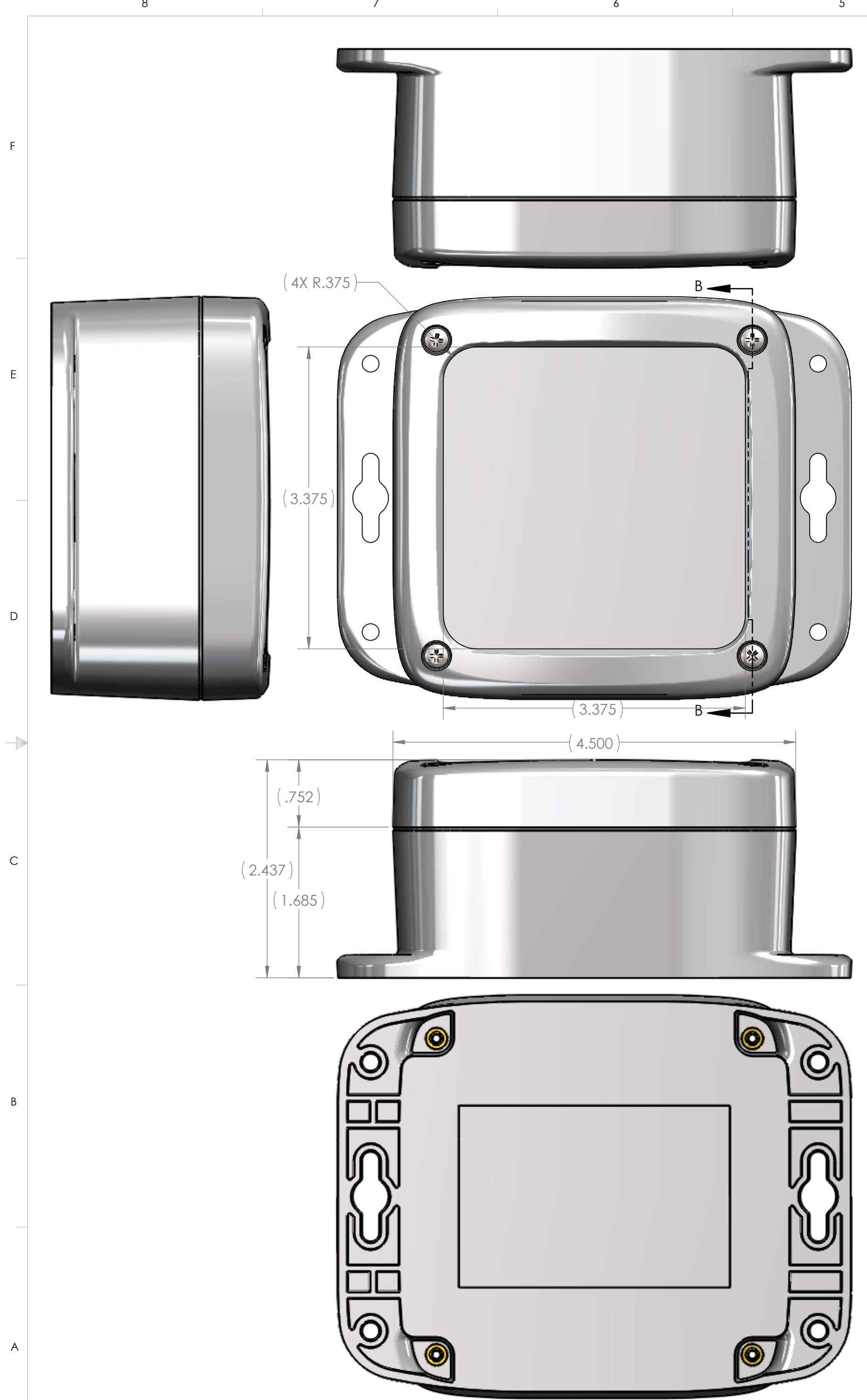


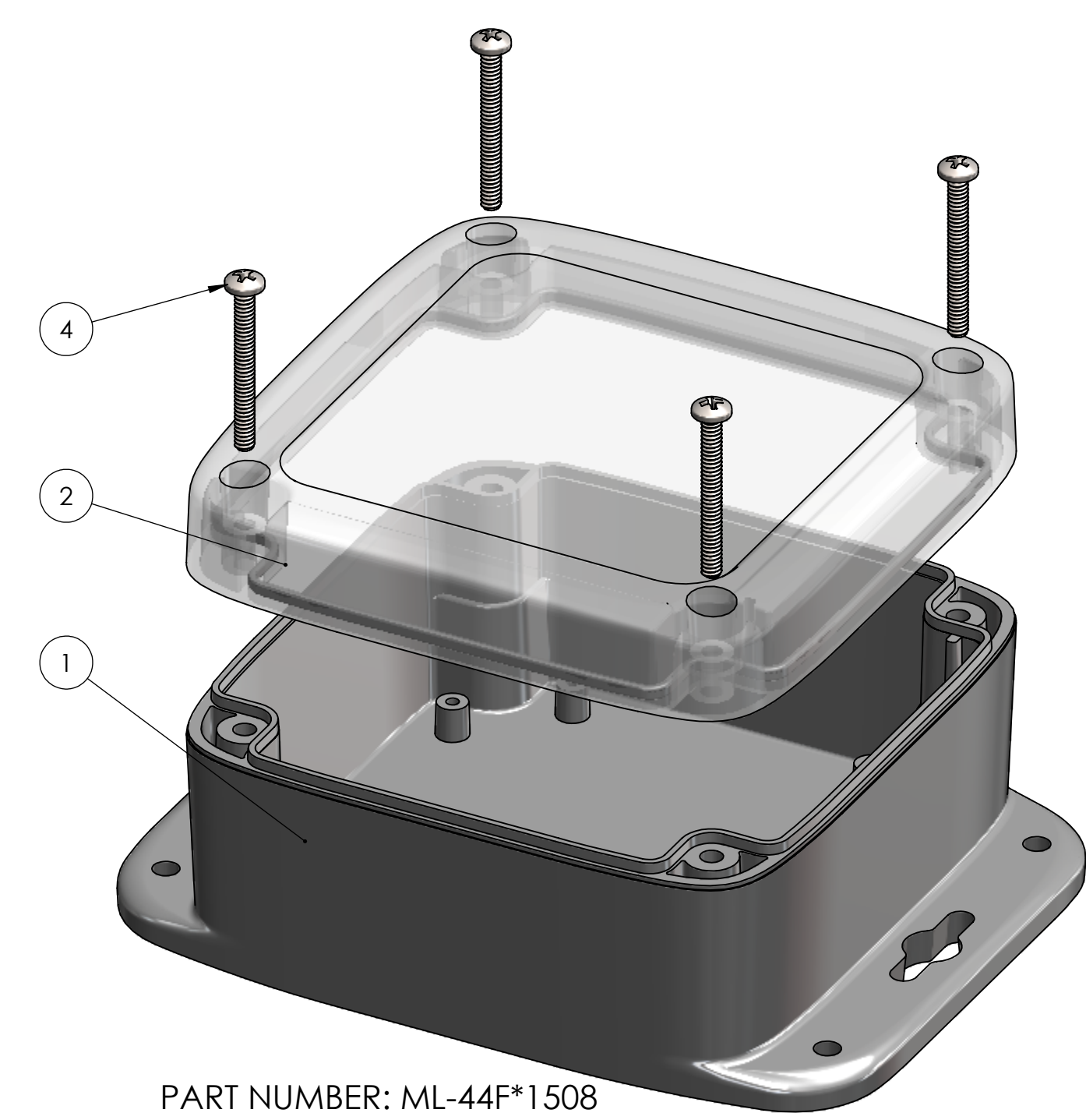
BOM Table							
ITEM NO.	PART NUMBER	Rev.	Description	FlameRating	Color	ML-44F*15/QTY.	ML-44F*1508/QTY.
1	ML-44BF*15	-	BASE W/BRASS INSERTS	UL94V-0	LIGHT GRAY (RAL 7035)	1	1
2	ML-44CG*08	-	COVER WITH GASKET	UL94V-0	CLEAR	-	1
3	ML-44CG*15	-	COVER WITH GASKET	UL94V-0	LIGHT GRAY (RAL 7035)	1	-
4	SCREWS-SS6-4	-	4-PACK: 6-32 X 1.25 PHMS			1	1



SECTION B-B



PART NUMBER: ML-44F\*15



PART NUMBER: ML-44F\*1508

UNLESS OTHERWISE SPECIFIED:  
 DIMENSIONS ARE IN: INCHES[mm]  
 TOLERANCES: ANGULAR: ±2°  
 TWO PLACE DECIMAL: ±.010  
 THREE PLACE DECIMAL: ±.005  
 PRINTED GRAPHICS: ±.010

PROPRIETARY AND CONFIDENTIAL  
 THE INFORMATION CONTAINED IN THIS  
 DRAWING IS THE SOLE PROPERTY OF  
 POLYCASE. ANY REPRODUCTION IN PART  
 OR AS A WHOLE WITHOUT THE WRITTEN  
 PERMISSION OF POLYCASE IS PROHIBITED.  
 CAD FILE: ML-44F

REV.	DESCRIPTION	ZONE	BY	APP'D	DATE
REVISIONS					

PART NO. SEE BOM  
 MATERIAL SEE BOM  
 FLAME RATING SEE BOM

NAME: D.M.F.  
 DATE: 9/16/2014  
 B.M.B.: 9/23/2014

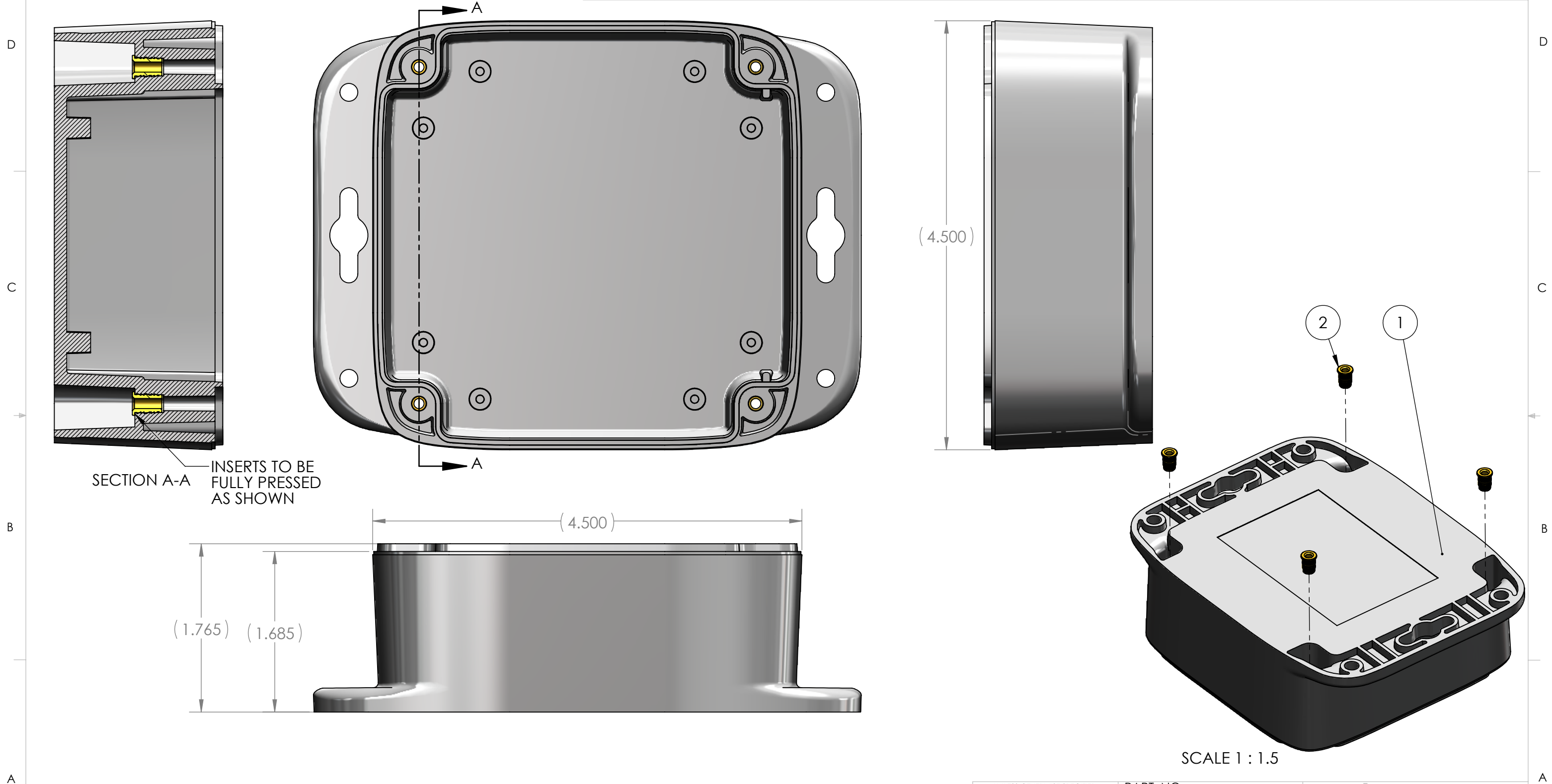
SIZE: C  
 SCALE: 1:1

1305 CHESTER RD. PARKWAY AVON, OHIO 44011-1083 U.S.A.  
 PH: 1-800-548-1233 440-934-0444 FAX: 440-934-0088

ASSEMBLY REV

SHEET 1 OF 1

BOM Table							
ITEM NO.	PART NUMBER	Rev.	Description	Material	FlameRating	Color	QTY.
1	ML-44BFN*15	-	BASE W/FLANGES & PCB BOSSES	PC	UL94V-0	LIGHT GRAY (RAL 7035)	1
2	INSERT-3	-	THREADED INSERT #6-32	BRASS			4



UNLESS OTHERWISE SPECIFIED: DIMENSIONS ARE IN: INCHES[mm] TOLERANCES: ANGULAR: ±2° TWO PLACE DECIMAL: ±.010 THREE PLACE DECIMAL: ±.005 PRINTED GRAPHICS: ±.010		PART NO. ML-44BF*15		 <small>1305 CHESTER IND. PARKWAY AVON, OHIO 44011-1083 U.S.A. PH#: 1-800-248-1233, 440-934-0444 FAX#: 440-934-0088</small>	
PROPRIETARY AND CONFIDENTIAL THE INFORMATION CONTAINED IN THIS DRAWING IS THE SOLE PROPERTY OF POLYCASE. ANY REPRODUCTION IN PART OR AS A WHOLE WITHOUT THE WRITTEN PERMISSION OF POLYCASE IS PROHIBITED. CAD FILE: ML-44BF		MATERIAL			
FLAME RATING UL94V-0		SIZE <b>B</b>		BASE W/BRASS INSERTS	
DRAWN CHECKED		NAME DATE		REV	
		D.M.F. 9/16/2014		-	
		2/5/2013		SCALE: 1:1	
				SHEET 1 OF 1	

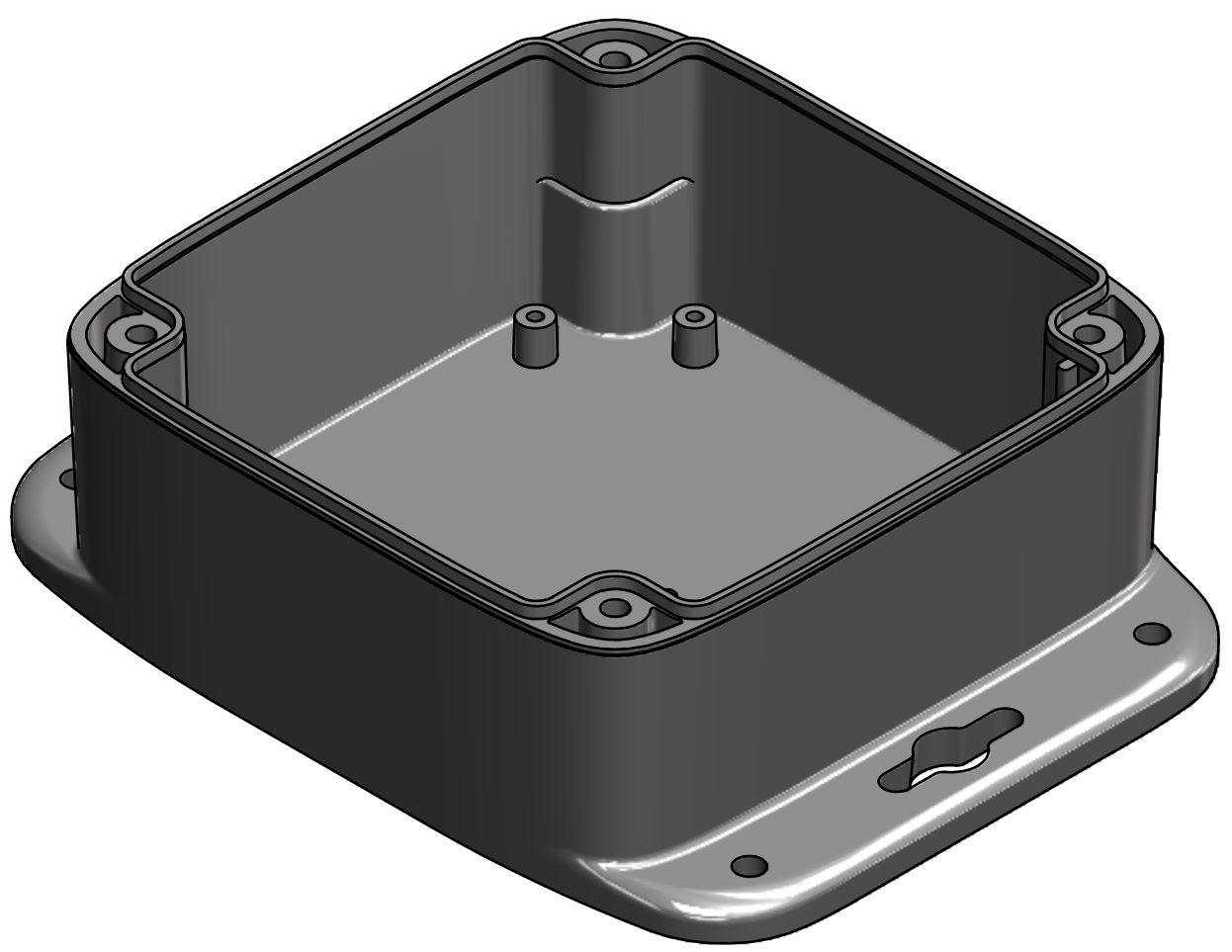
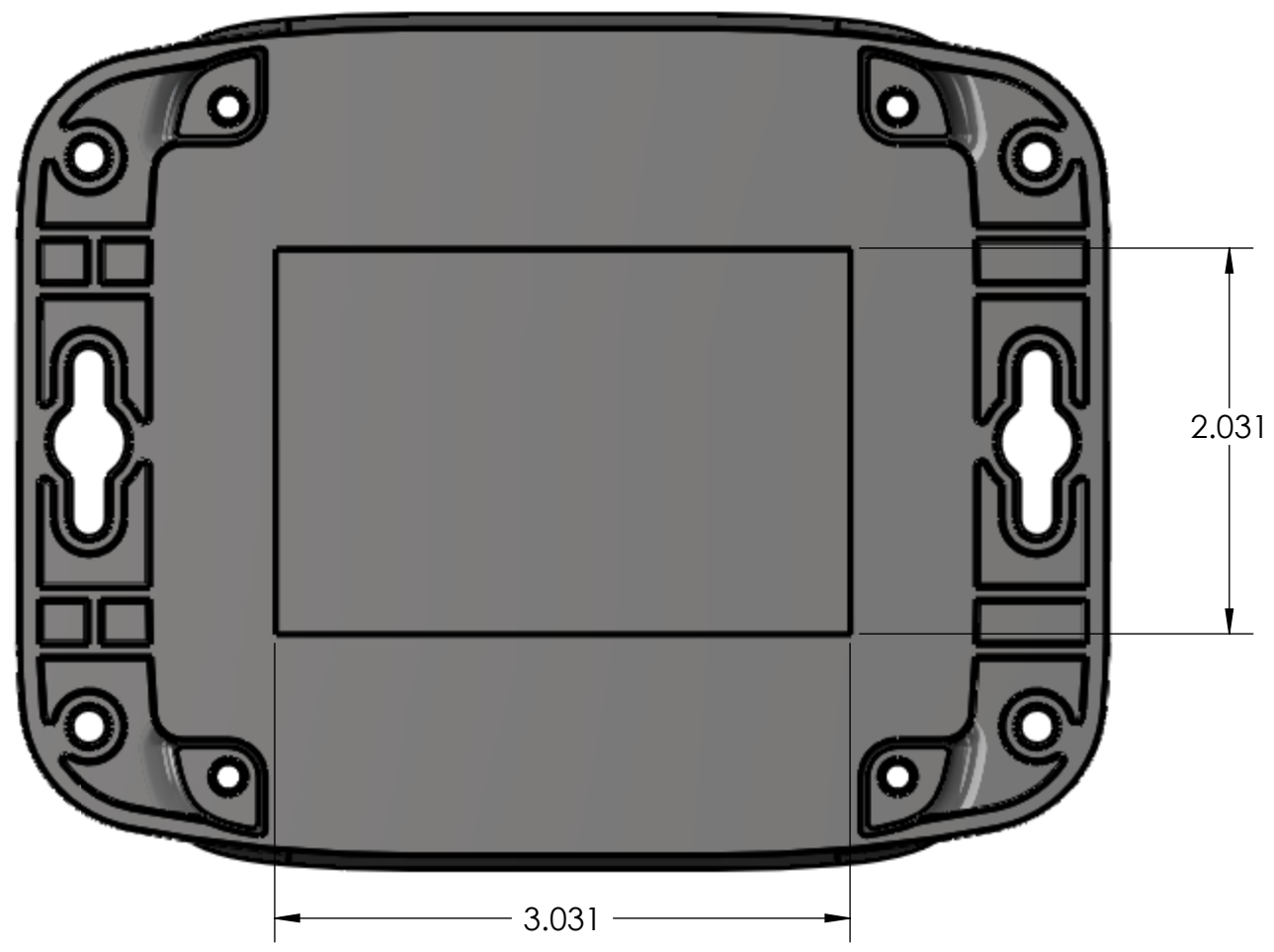
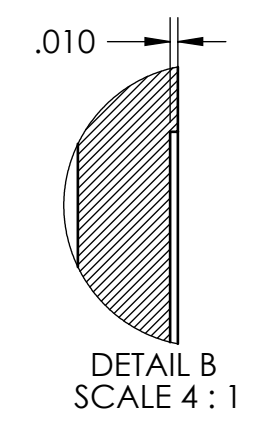
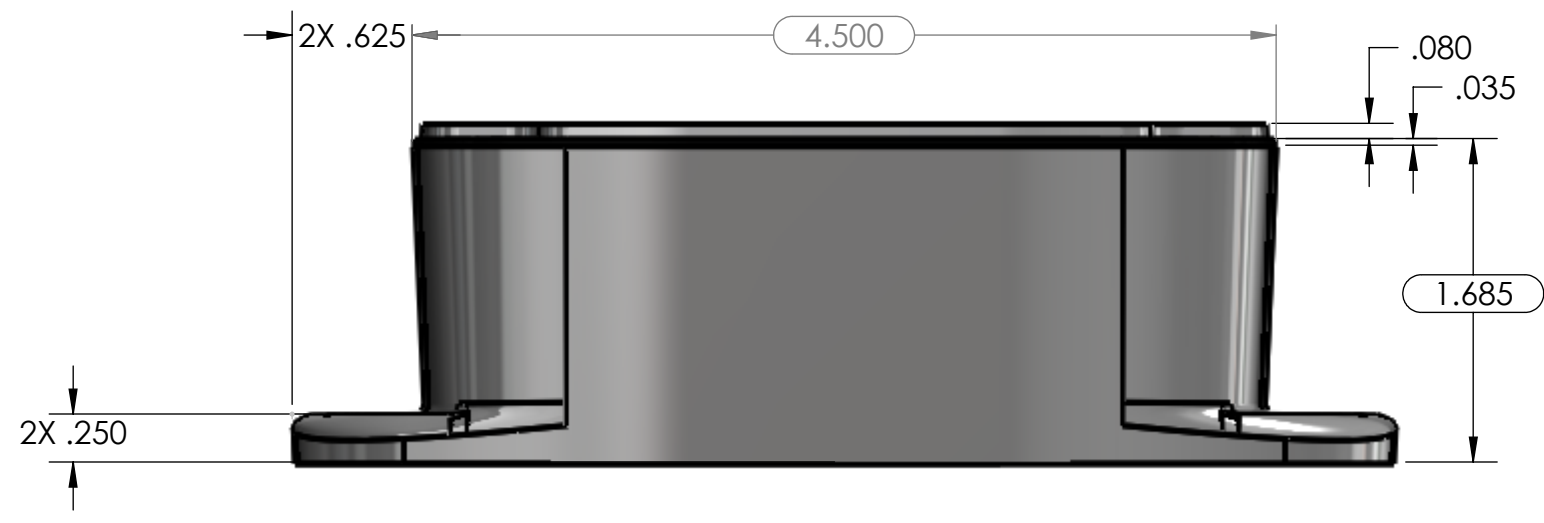
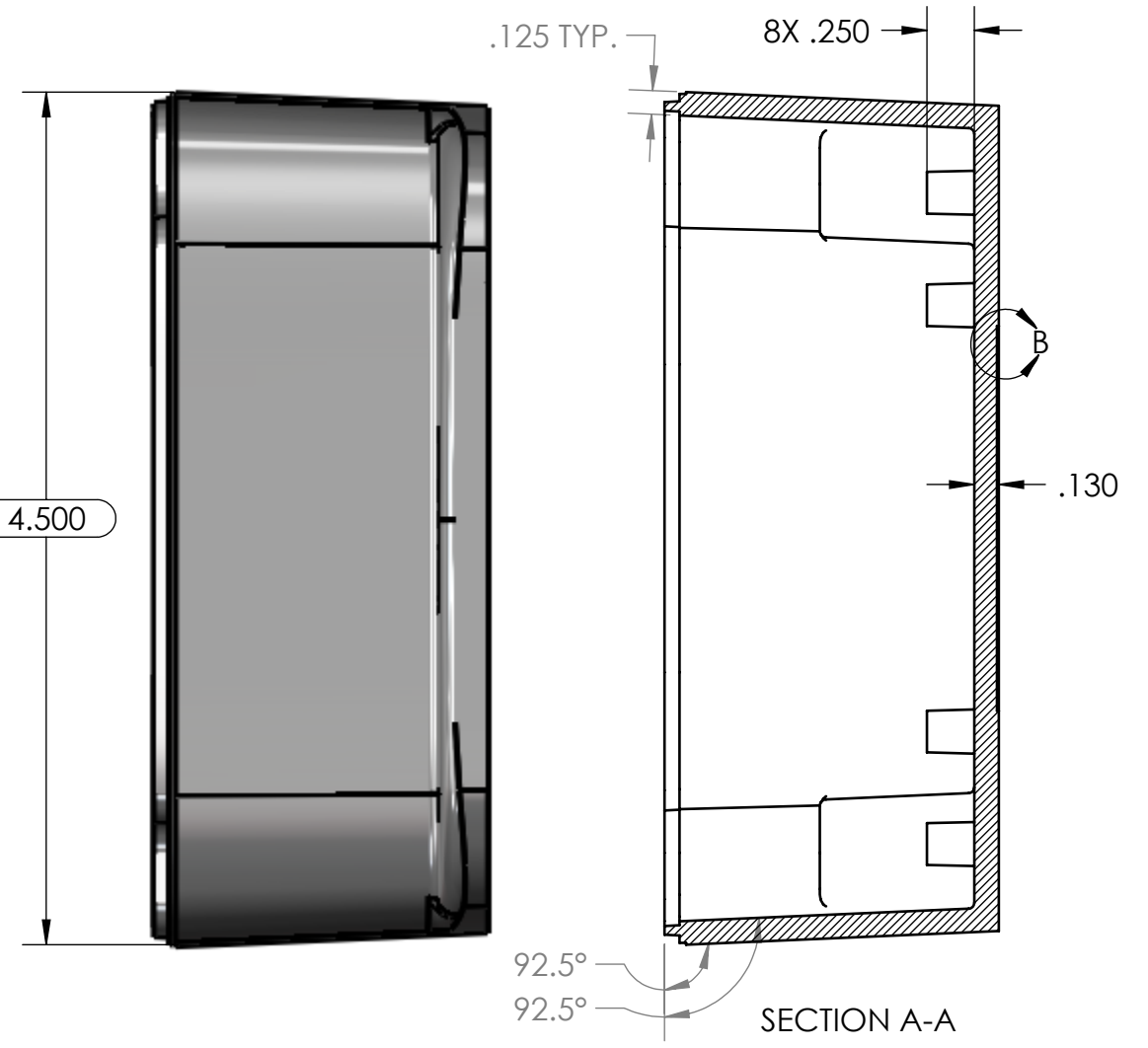
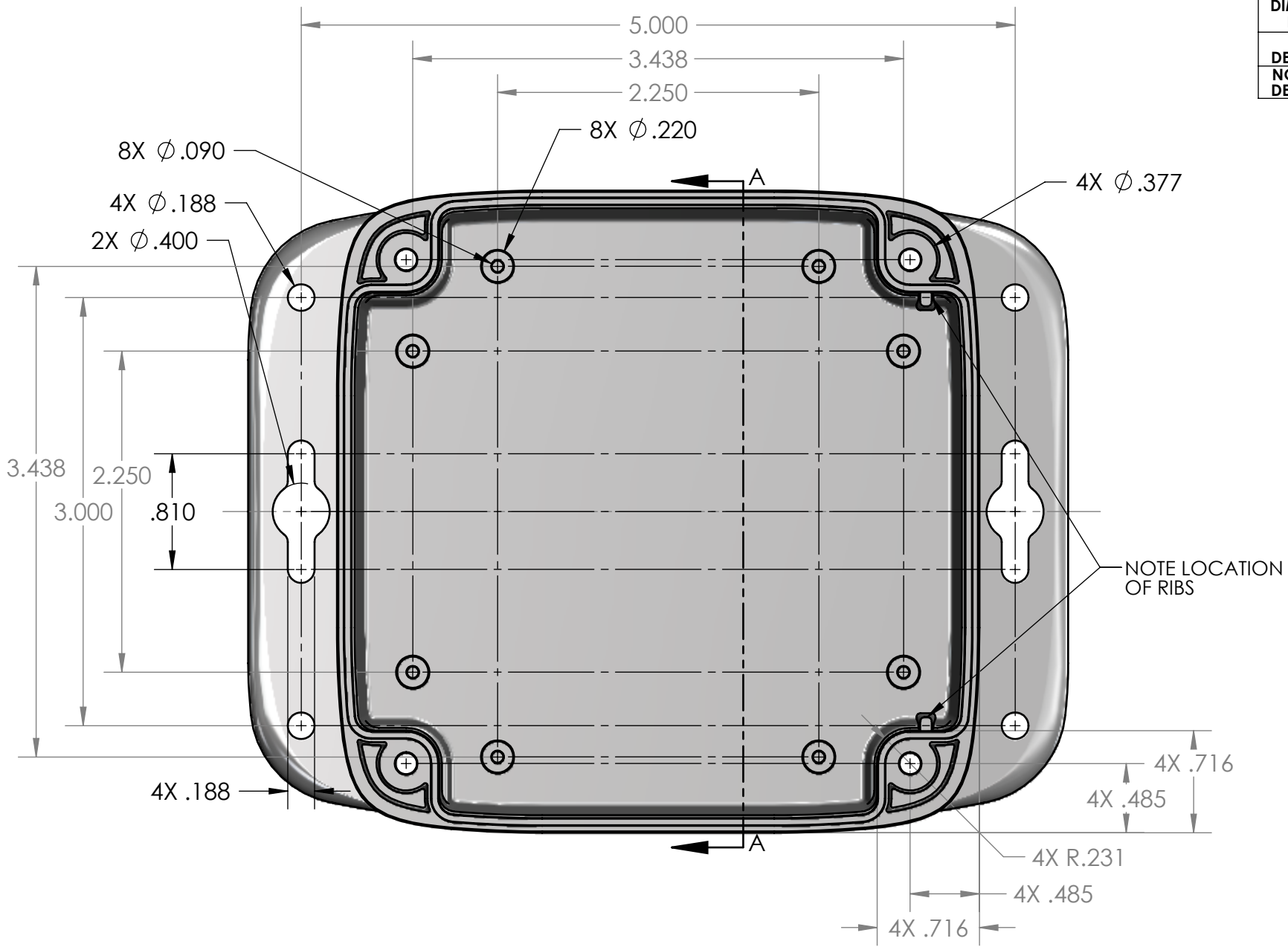
REV.	DESCRIPTION	ZONE	BY	APPR'D	DATE
REVISIONS					

8 7 6 5 4 3 2 1

8 7 6 5 4 3 2 1



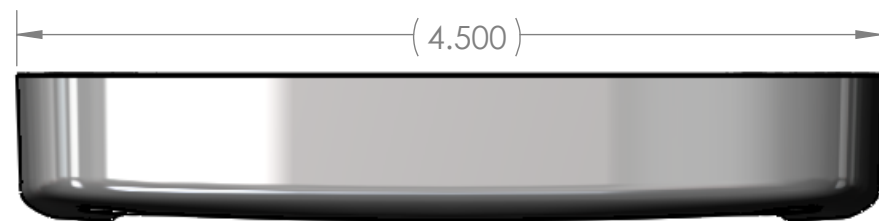
		TOLERANCE CHART															
DIMENSION RANGE		0	.039	.118	.236	.394	.591	.866	1.181	1.575	2.087	2.756	3.543	4.724	6.299	7.874	9.843
TOOL DEPENDENT		±.007	±.007	±.008	±.008	±.009	±.010	±.011	±.012	±.013	±.015	±.017	±.020	±.024	±.028	±.035	.043
NON-TOOL DEPENDENT		±.003	±.004	±.004	±.004	±.005	±.006	±.007	±.008	±.009	±.011	±.013	±.016	±.020	±.024	±.031	.039



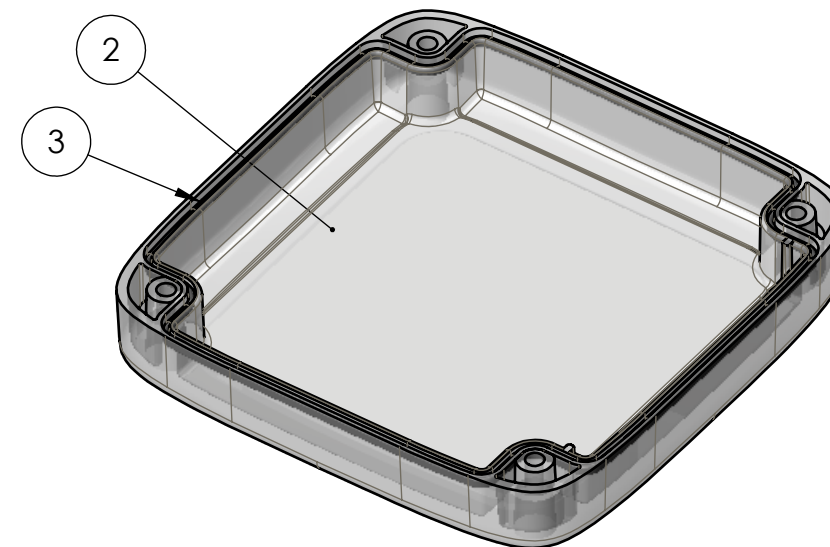
- NOTES:  
1. COLOR: LIGHT GRAY (RAL 7035)  
2. MATERIAL SPEC: /PC/XXX/GY  
3. REFER TO SOLID MODEL FOR COMPLETE PART DEFINITION.  
4. (INSPECTION DIMENSION)  
5. EJECTOR PINS TO BE FLUSH ±.015  
6. FLASH .005 MAX  
7. MAX REGRIND: 20%  
8. GATE MUST BE FLUSH  $\begin{matrix} +.000 \\ -.015 \end{matrix}$

UNLESS OTHERWISE SPECIFIED: DIMENSIONS ARE IN: INCHES[mm] TOLERANCES: ANGULAR: ±2° TWO PLACE DECIMAL: ± THREE PLACE DECIMAL: ± PRINTED GRAPHICS: ±		PART NO. ML-44BFN*15		 1305 CHESTER RD. PARKWAY AVON, OHIO 44011-1083 U.S.A. PH: 1-800-248-1233, 440-934-0444 FAX: 440-934-0088	
PROPRIETARY AND CONFIDENTIAL THE INFORMATION CONTAINED IN THIS DRAWING IS THE SOLE PROPERTY OF POLYCASE. ANY REPRODUCTION IN PART OR AS A WHOLE WITHOUT THE WRITTEN PERMISSION OF POLYCASE IS PROHIBITED. CAD FILE: ML-44BFN		MATERIAL PC			
FLAME RATING UL94V-0		SIZE C		BASE W/FLANGES & PCB BOSSSES	
DRAWN CHECKED		NAME DATE		REV	
		D.M.F. 9/16/2014		-	
		B.M.B. 9/23/2014		SCALE: 1:1	
				SHEET 1 OF 1	

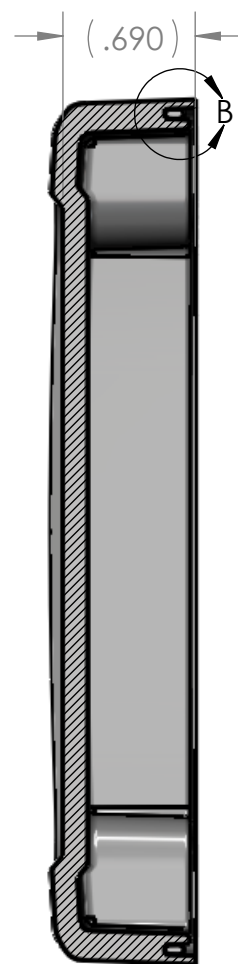
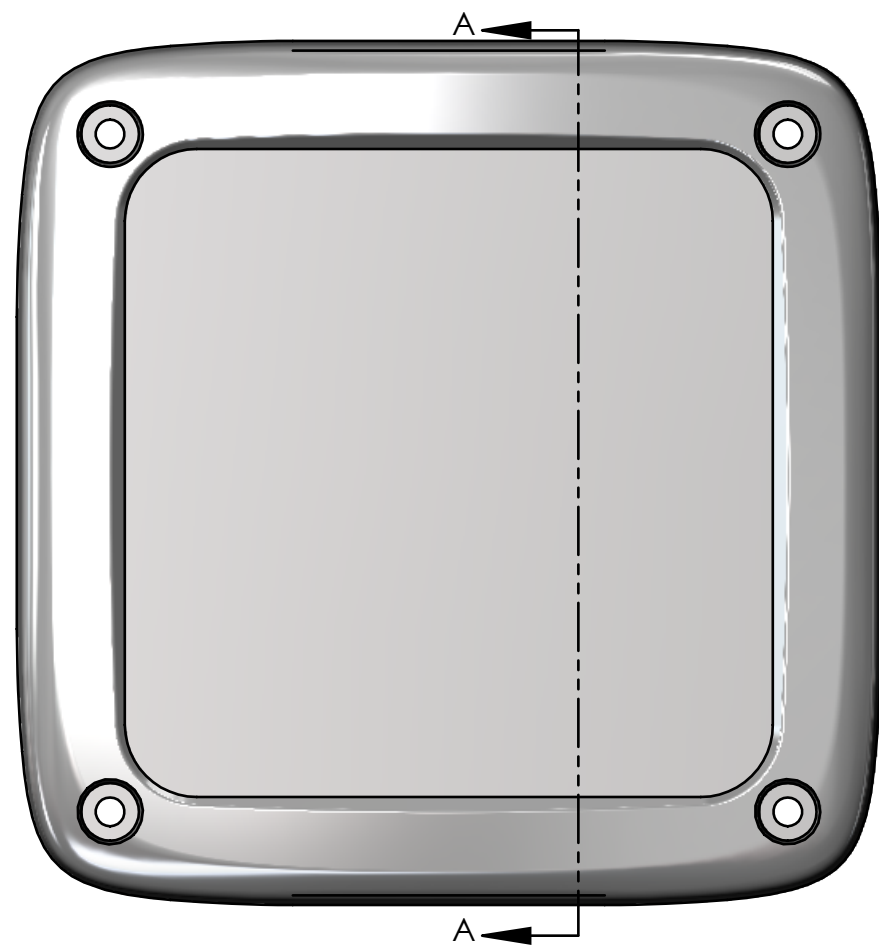
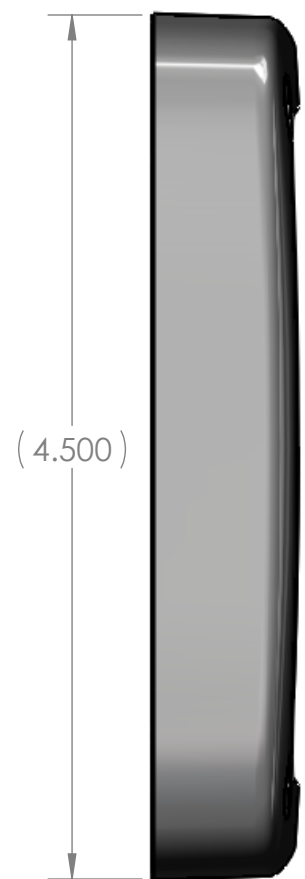
BOM Table								
ITEM NO.	PART NUMBER	Rev.	Description	Material	FlameRating	Color	ML-44CG*15/QTY.	ML-44CG*08/QTY.
1	ML-44C*15	-	COVER	PC	UL94V-0	LIGHT GRAY (RAL 7035)	1	-
2	ML-44C*08	-	COVER	PC	UL94V-0	CLEAR	-	1
3	GASKET-9	-	GASKET	SILICONE		CLEAR	1	1



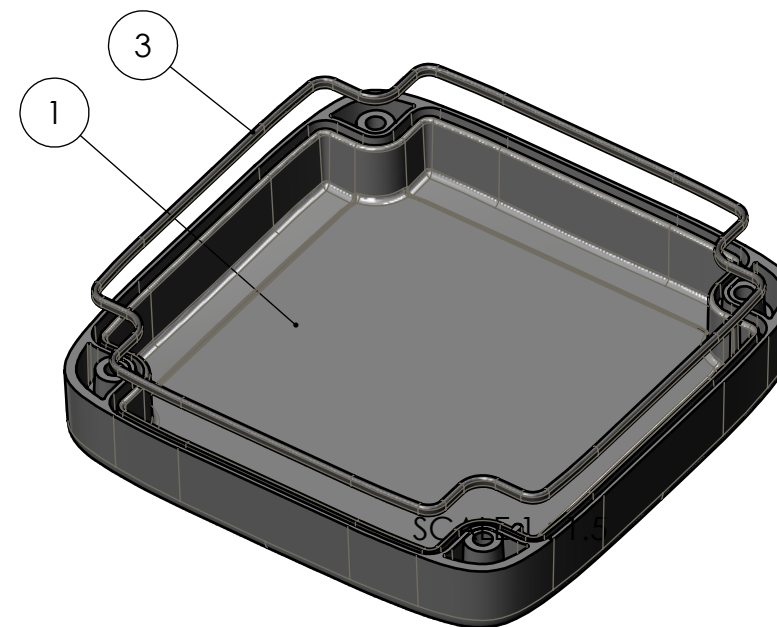
DETAIL B  
SCALE 2 : 1



SCALE 1 : 1.5



SECTION A-A



UNLESS OTHERWISE SPECIFIED:  
DIMENSIONS ARE IN: INCHES [mm]  
TOLERANCES: ANGULAR: ±2°  
TWO PLACE DECIMAL: ±.010  
THREE PLACE DECIMAL: ±.005  
PRINTED GRAPHICS: ±.010

PROPRIETARY AND CONFIDENTIAL  
THE INFORMATION CONTAINED IN THIS  
DRAWING IS THE SOLE PROPERTY OF  
POLYCASE. ANY REPRODUCTION IN PART  
OR AS A WHOLE WITHOUT THE WRITTEN  
PERMISSION OF POLYCASE IS PROHIBITED.  
CAD FILE: ML-44CG

PART NO.  
SEE BOM  
MATERIAL  
SEE BOM

FLAME RATING  
SEE BOM

DRAWN	NAME	DATE
CHECKED	D.M.F.	9/16/2014
		2/5/2013

**polycase**  
1305 CHESTER IND. PARKWAY AVON, OHIO 44011-1083 U.S.A.  
PH#: 1-800-248-1233, 440-934-0444 FAX#: 440-934-0088

SIZE <b>B</b>	COVER WITH GASKET	REV -
------------------	-------------------	----------

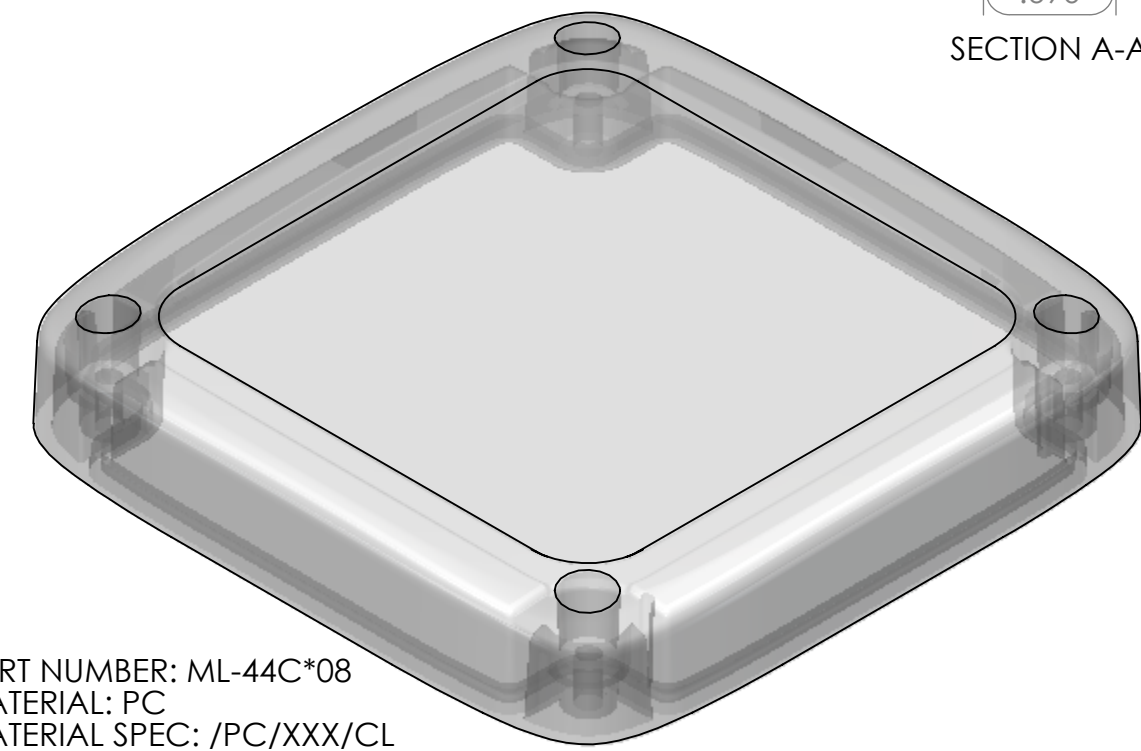
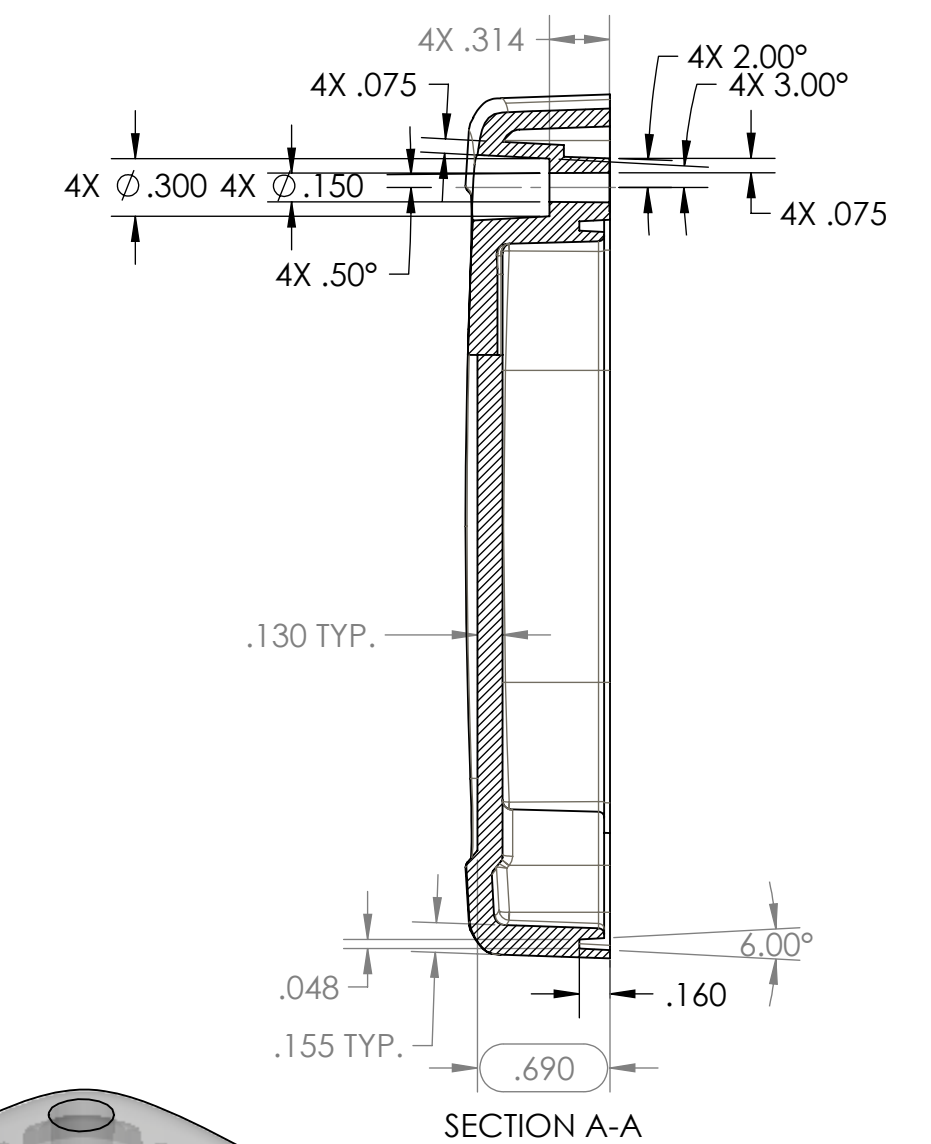
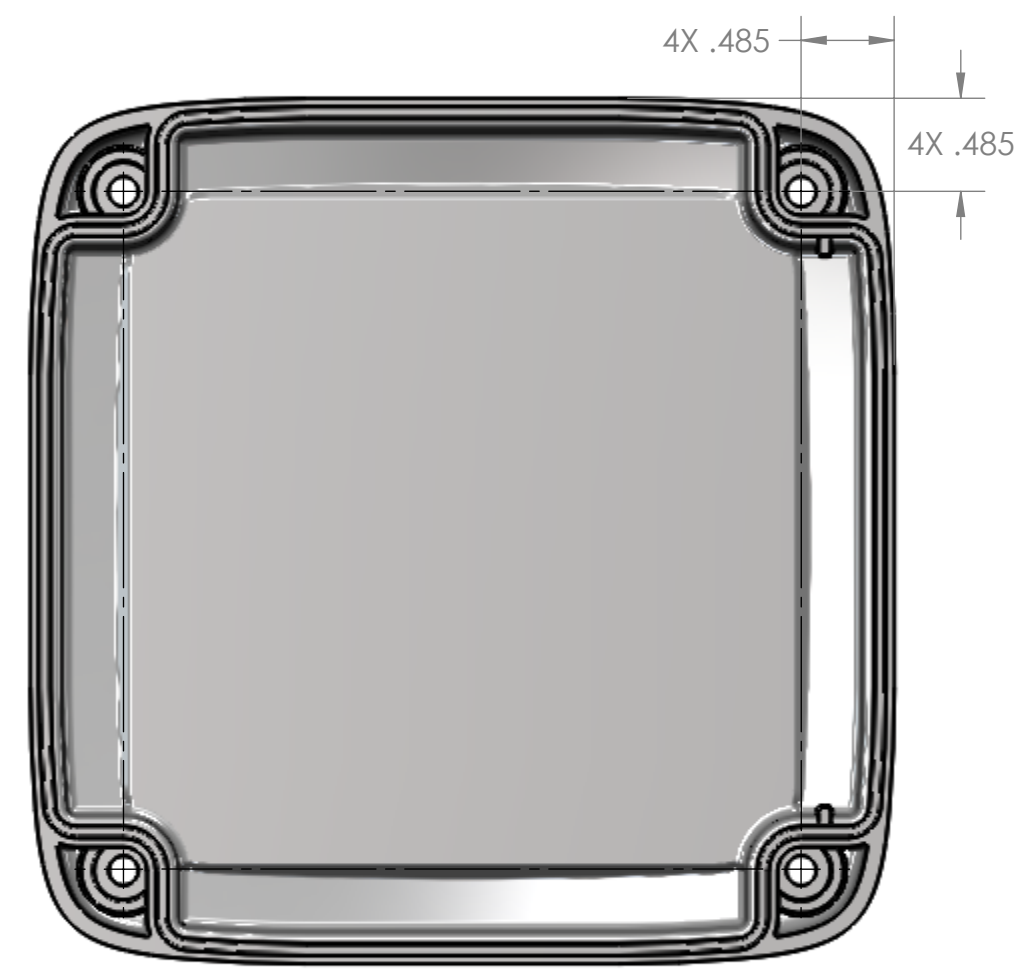
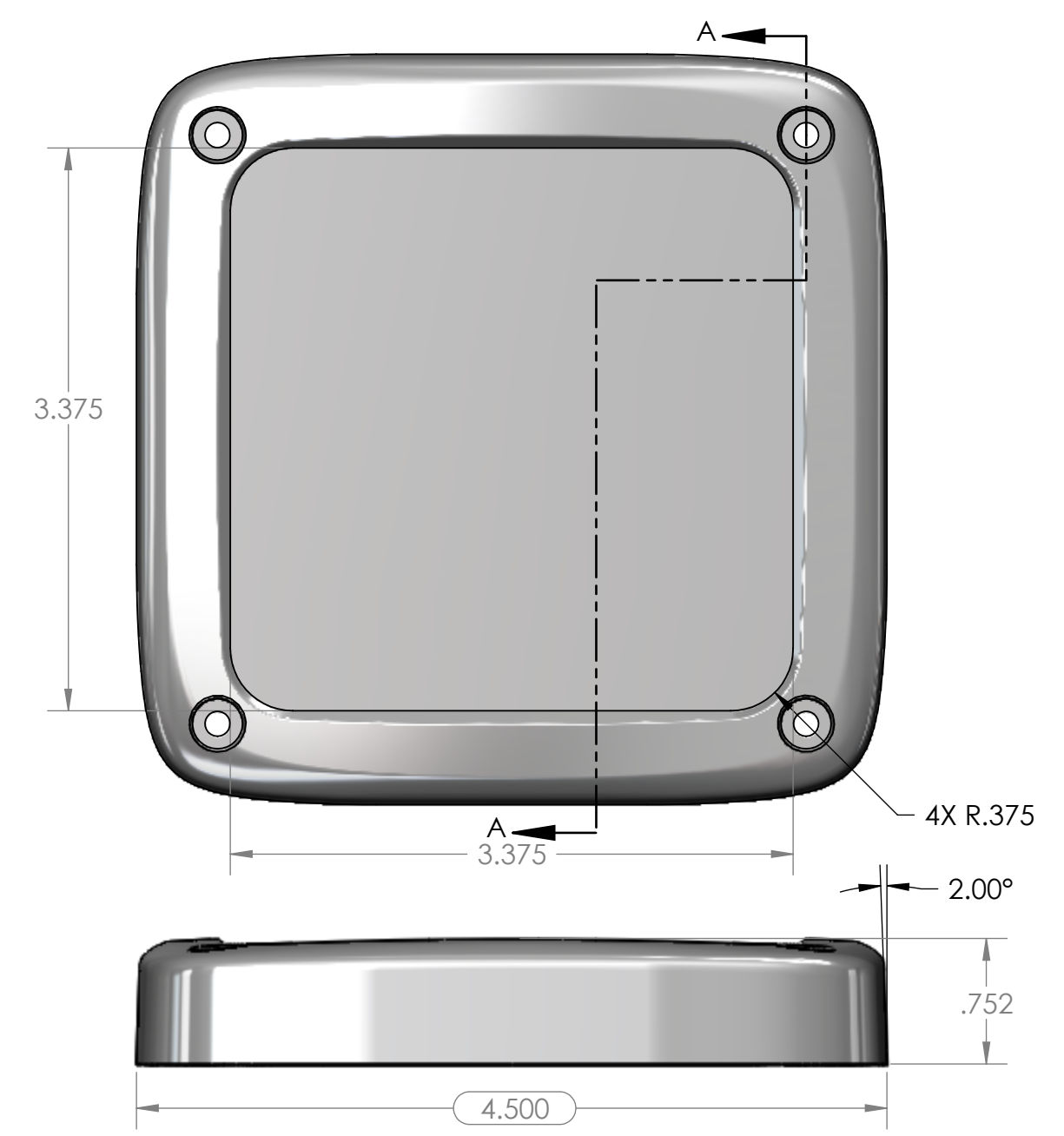
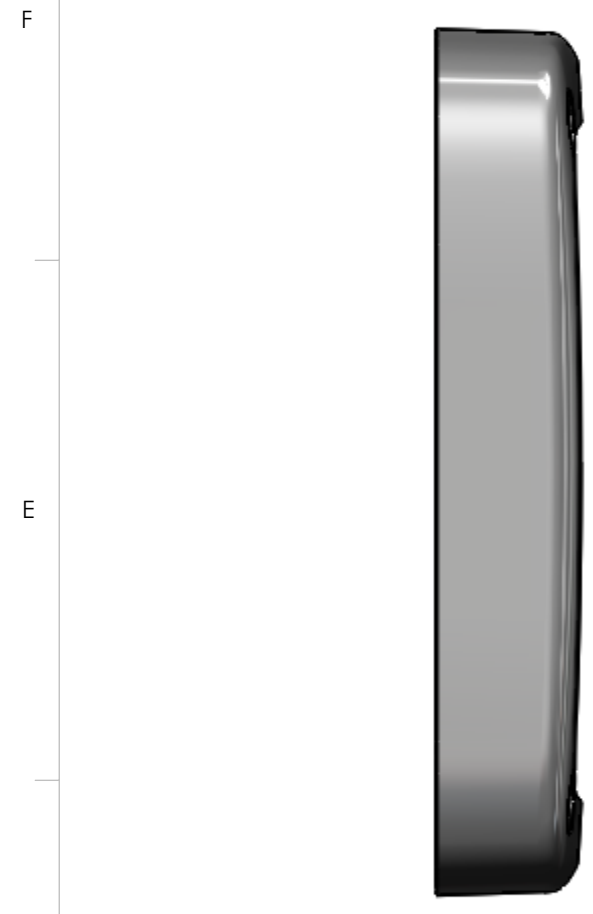
SCALE: 1:1



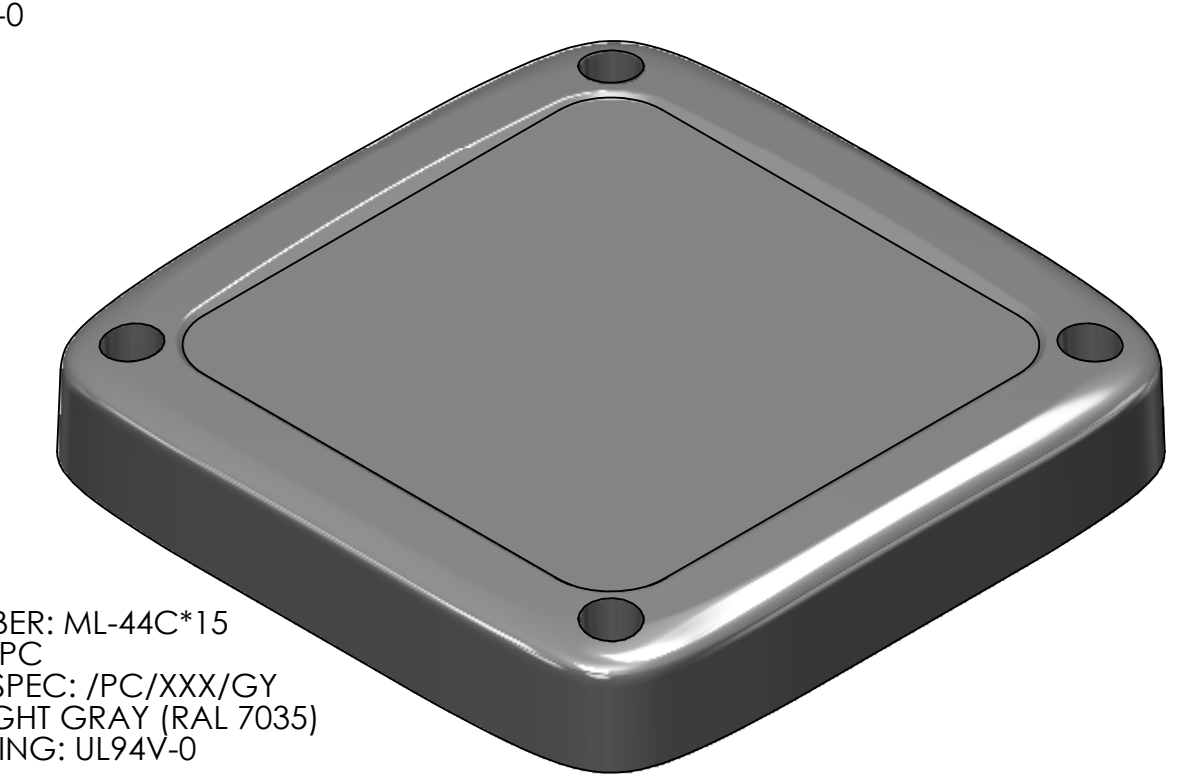
SHEET 1 OF 1

REV.	DESCRIPTION	ZONE	BY	APPR'D	DATE
REVISIONS					

TOLERANCE CHART																
DIMENSION RANGE	0	.039	.118	.236	.394	.591	.866	1.181	1.575	2.087	2.756	3.543	4.724	6.299	7.874	9.843
	.039	.118	.236	.394	.591	.866	1.181	1.575	2.087	2.756	3.543	4.724	6.299	7.874	9.843	12.402
TOOL DEPENDENT	±.007	±.007	±.008	±.008	±.009	±.010	±.011	±.012	±.013	±.015	±.017	±.020	±.024	±.028	±.035	.043
NON-TOOL DEPENDENT	±.003	±.004	±.004	±.004	±.005	±.006	±.007	±.008	±.009	±.011	±.013	±.016	±.020	±.024	±.031	.039



PART NUMBER: ML-44C\*08  
 MATERIAL: PC  
 MATERIAL SPEC: /PC/XXX/CL  
 COLOR: CLEAR  
 FLAME RATING: UL94V-0

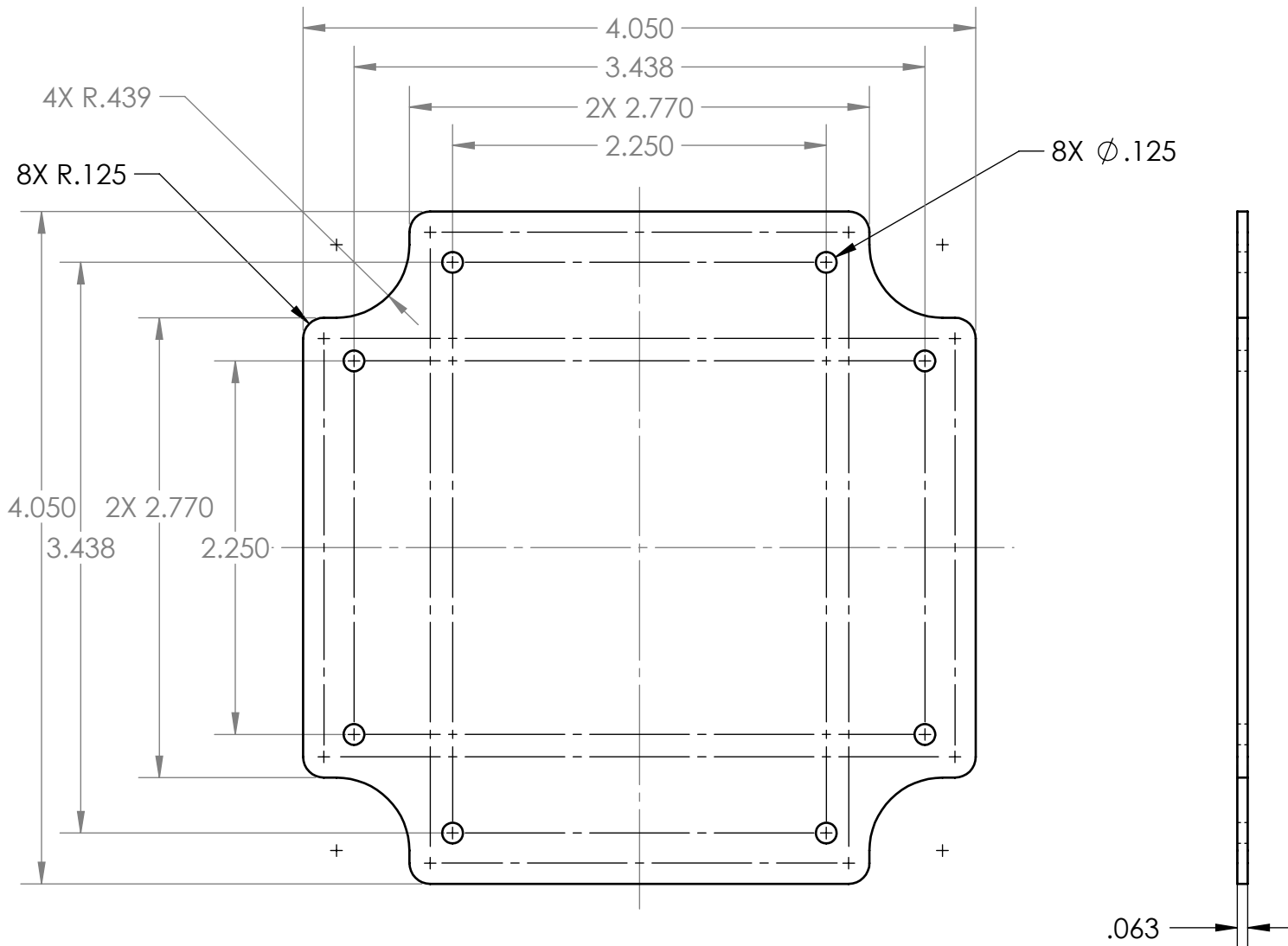


PART NUMBER: ML-44C\*15  
 MATERIAL: PC  
 MATERIAL SPEC: /PC/XXX/GY  
 COLOR: LIGHT GRAY (RAL 7035)  
 FLAME RATING: UL94V-0



- NOTES:  
 1. REFER TO SOLID MODEL FOR COMPLETE PART DEFINITION.  
 2. FINISH: DIAMOND POLISH  
 3. (INSPECTION DIMENSION)  
 4. FLASH CANNOT EXCEED .005  
 5. MAX REGRIND: 20%  
 6. GATE MUST BE FLUSH  $+0.000$   
 $-0.015$

REV.	DESCRIPTION	ZONE	BY	APPR'D	DATE
REVISIONS					

UNLESS OTHERWISE SPECIFIED: DIMENSIONS ARE IN: INCHES[mm] TOLERANCES: ANGULAR: ±.5° TWO PLACE DECIMAL: ± THREE PLACE DECIMAL: ± PRINTED GRAPHICS: ±.010		PART NO. AS NOTED		 1305 CHESTER RD. PARKWAY AVON, OHIO 44011-1083 U.S.A. PH: 1-800-248-1233 440-934-0444 FAX: 440-934-0088	
PROPRIETARY AND CONFIDENTIAL THE INFORMATION CONTAINED IN THIS DRAWING IS THE SOLE PROPERTY OF POLYCASE. ANY REPRODUCTION IN PART OR AS A WHOLE WITHOUT THE WRITTEN PERMISSION OF POLYCASE IS PROHIBITED. CAD FILE: ML-44C		MATERIAL AS NOTED			
DRAWN CHECKED		NAME DATE		SIZE COVER	
		D.M.F. 9/16/2014 B.M.B. 9/23/2014		SCALE: 1:1	
				REV -	
				SHEET 1 OF 1	



NOTES:  
 1. INCLUDES .031 CLEARANCE FROM INTERIOR.

UNLESS OTHERWISE SPECIFIED: DIMENSIONS ARE IN: INCHES[mm] TOLERANCES: ANGULAR: ±2° TWO PLACE DECIMAL: ±.010 THREE PLACE DECIMAL: ±.005 PRINTED GRAPHICS: ±.010	PART NO. ML-44BF-PCB		 <small>1305 CHESTER IND. PARKWAY AVON, OHIO 44011-1083 U.S.A.          PH#: 1-800-248-1233, 440-934-0444 FAX#: 440-934-0088</small>					
	MATERIAL							
PROPRIETARY AND CONFIDENTIAL THE INFORMATION CONTAINED IN THIS DRAWING IS THE SOLE PROPERTY OF POLYCASE. ANY REPRODUCTION IN PART OR AS A WHOLE WITHOUT THE WRITTEN PERMISSION OF POLYCASE IS PROHIBITED. CAD FILE: ML-44BF-PCB	FLAME RATING	SIZE <b>A</b>	PCB TEMPLATE (NOT SUPPLIED)					
		NAME D.M.F.	DATE 9/16/2014	REV -				
REV.	DESCRIPTION	ZONE	BY	APPR'D	DATE	SCALE: 1:1		SHEET 1 OF 1

REV.	DESCRIPTION	ZONE	BY	APPR'D	DATE
	REVISIONS				

5

4

3

2

1

D  
C  
B  
A