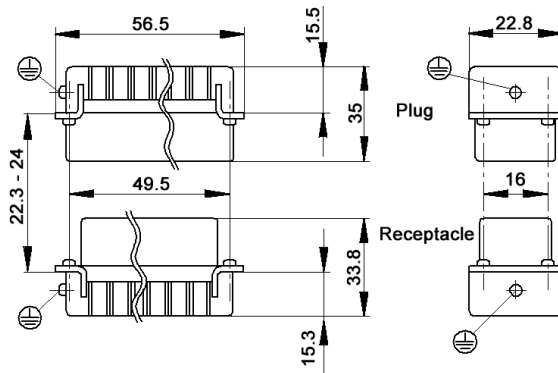
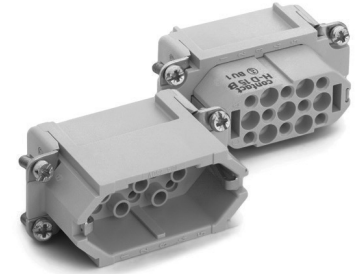


EPIC® HD 15 Inserts

Crimp-Terminated: Stamped & Formed Contacts

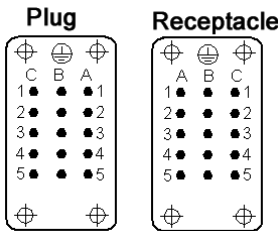


All dimensions are in mm.



Contacts sold separately, see below

View from Cable Side



Approvals



Compatible Housing



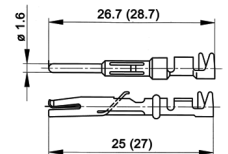
HA 10:
page 402

Description	Plug	Receptacle
Crimp-Terminated: Stamped & Formed Contacts	11255000	11256000



Stamped & Formed Contacts

1.6 mm Diameter



1 part number = 1 contact, sold in bags of 100 or 1 reel

Contact Size mm ²	AWG	Stripping Length (mm)	Bag of 100: Silver		Bag of 100: Gold		Reel of 100: Silver Left-hand Feed		Reel of 200: Silver Left-hand Feed	
			Pin	Socket	Pin	Socket	Pin	Socket	Pin	Socket
0.14-0.5	26-20	2.5-0.5	11241100	11231100	11243100	11233100	—	—	11240700	11230700
0.5-1.5	20-16	3.5-0.5	11221000	11236100	11221300	11238100	—	—	11220700	11235700
1.5-2.5	16-14	3.5-0.5	11223500	11228500	—	—	11223000	11228000	—	—

Contact Size mm ²	AWG	Stripping Length (mm)	Reel of 2000: Silver Right-hand Feed		Reel of 2000: Gold Right-hand Feed		Reel of 2000: Silver Left-hand Feed		Reel of 2000: Gold Left-hand Feed	
			Pin	Socket	Pin	Socket	Pin	Socket	Pin	Socket
0.14-0.5	26-20	2.5-0.5	11240000	11230000	—	—	11240400	11230400	11240500	11230500
0.5-1.5	20-16	3.5-0.5	11220000	11235000	11220100	11235200	11226000	11226500	—	—
1.5-2.5	16-14	3.5-0.5	—	—	—	—	11222700	11227700	—	—

Complete the Installation

	Crimp Tool: 11147000		Locator: 11147300		Crimp Dies: 0.14-0.5 mm ² : 11147170 0.5-1.5 mm ² : 11147180 1.5-2.5 mm ² : 11147190		Crimp Tool for Reel: (includes tool, die, & locator) 0.14-0.5 mm ² : 11147004 0.5-1.5 mm ² : 11147005 1.5-2.5 mm ² : 11147006
			Removal Tool: 11161000				



Photographs are not to scale and are not true representations of the products in question. For current information go to our website. If not otherwise specified, all values relating to the product are nominal values.